

Muskwa-Kechika Advisory Report
2007-2008 Annual Report
to the Premier and the Public

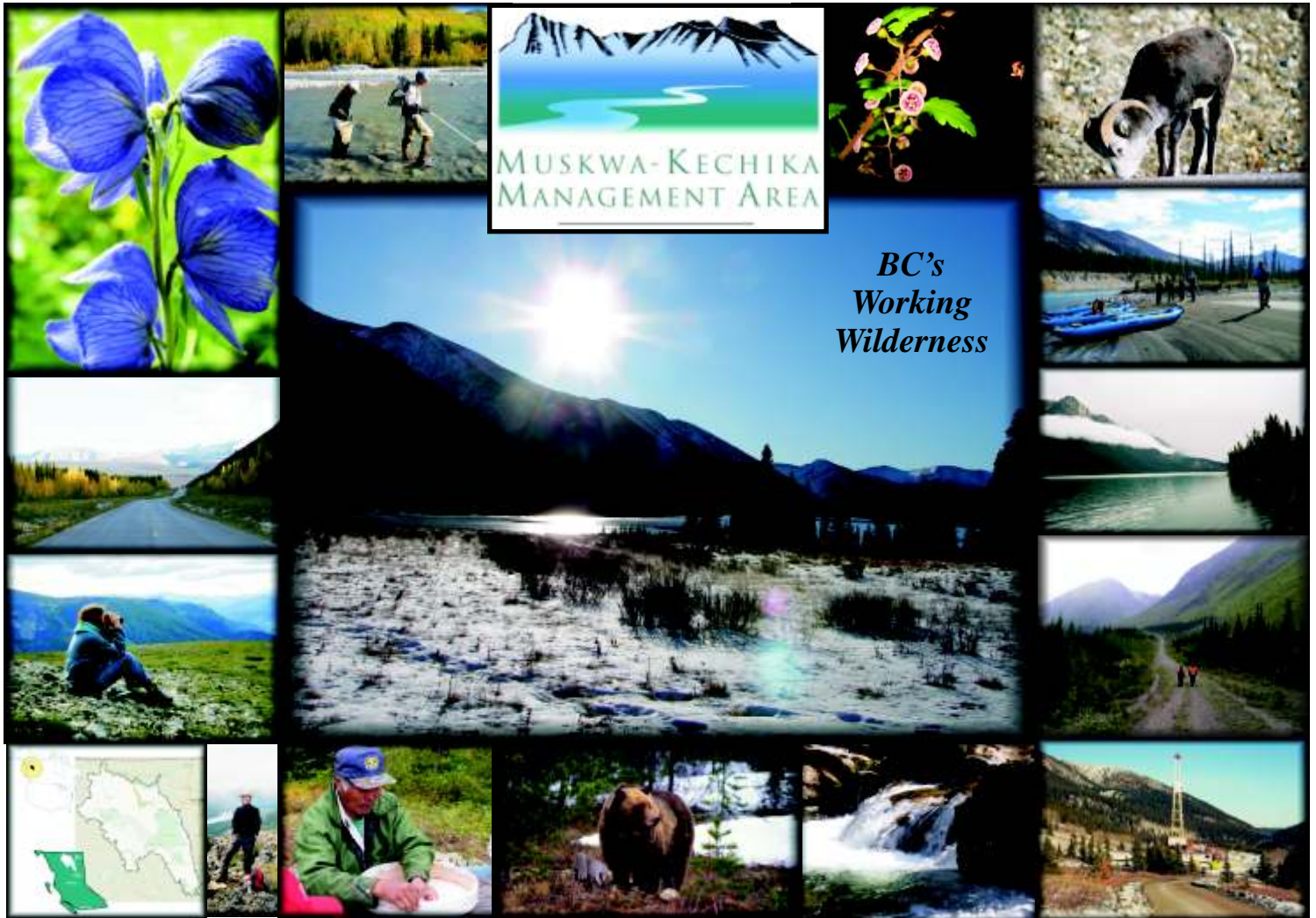


Photo Credits:

K. Vince

Publication Information
ISBN etc

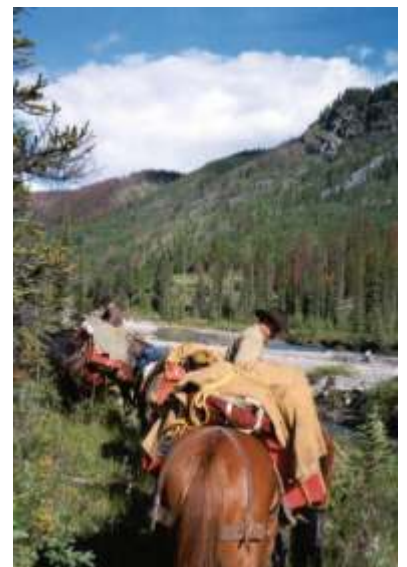


Table of Contents

Table of contents:

Message from the Chair	2
Executive Summary	3
Muskwa-Kechika Management Area Background	4
Muskwa-Kechika Advisory Board	5&6
IAMC 2007-2008 Overview	7
MKAB Advice to the Provincial Government	8
Key Projects and Initiatives in 2007-2008	9
Achievements	
M-KAB Financial Report April 2007 - March 2008	10
Appendix 1 2007-08 Members and Bios	11



K. Vince

Message from the Chair

I am pleased to provide to the Premier of British Columbia, the Minister Responsible for the Muskwa-Kechika Management Area and the residents of British Columbia our annual report for 2007-08.

Over this past year, the Muskwa-Kechika Advisory Board (M-KAB) continued to go through a major transition period that started in 2006-07. The legislated role of our Advisory Board has not changed; we continue to provide advice to the provincial government on natural resource management in the Muskwa-Kechika Management Area (M-KMA).

The transition we have had to make is a change to our funding to a much smaller operational budget provided to us through the Ministry of Agriculture and Lands, Integrated Land Management Bureau.

This change in funding has resulted in a major shift for our Advisory Board, we no longer have funds to prioritize and implement important project work in the M-KMA.

Projects undertaken over the previous 8 years assisted us to meet the vision and long term sustainability of the M-KMA. We now are working to establish a collaborative working relationship with provincial government agencies to identify projects and find support to get them funded and implemented.

Our role in providing advice to the provincial government will be met by working closely with the provincial government agencies to prioritize strategic planning and specific project work and following through on our review of approved tenures in the M-KMA to make sure they are consistent with the approved Strategic Local Plans that have been developed.

As the M-KAB Chair, I continue to encourage all to learn more about the Muskwa-Kechika Management Area that is rich in wildlife, wilderness, cultural values and provides economic opportunities that will be sustained for future generations.

Tom Briggs
Chair
Muskwa-Kechika Advisory Board



Executive Summary

As noted in the Message from the Chair, this past year was a transition year for the Muskwa-Kechika Advisory Board. In making this transition, the M-KAB updated and refined its Strategic Direction and Business plan documents. These documents provide the focus for the work of the Advisory Board for the long term.

The Board welcomed nine new members: Jason Lee, Andy Johnson, Laurie Montour, Gerry Hunter, Darrell Regimbald, Tim Trapp, Johnny Mikes, Kristy Emery and Peter Stone appointed by the Premier in May of 2007, all for a one year term. The M-KAB had a full slate of 17 members. (see appendix 1 for biographies on the membership)

The M-KAB held 3 meetings in 2007-08 and continued to rotate these meetings between Fort St John, Mackenzie and Fort Nelson.

Ongoing meetings were held with government agencies and the provincial government Peace & Omineca Managers Committees. These meetings continue to build a positive and collaborative working relationship with the provincial government. Further meetings are required to set priorities for strategic planning in the M-KMA as outlined in the M-K Management Plan Regulation. As well the Advisory Board is tabling cumulative effects management, adaptive management and other resource management objectives that will help maintain the important values of the M-KMA in perpetuity.

A “State of the Muskwa-Kechika” report was drafted by the end of the 2007-08 fiscal year. This report, when finalized by the M-K Advisory Board's Monitoring and Reporting committee will be the first ever of this report and will set the stage for future reporting on how the M-KMA is being managed in terms of its legislated vision and mandate.

At the end of March 2008, 15 of the M-K Advisory Board memberships terms ended and the Integrated Land Management Bureau was working to ensure that a full 17 member Board was in place for 2008-09.



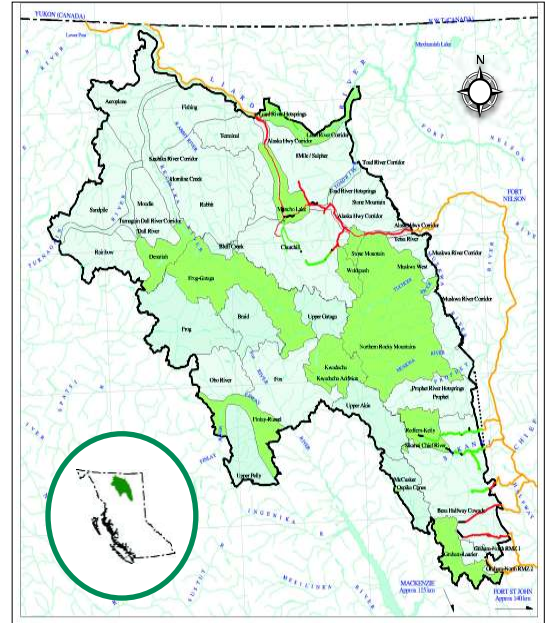
Background Muskwa-Kechika Management Area

Rich in wildlife, minerals, gas, forests and recreational resources, the Muskwa-Kechika Management Area, located in northeastern British Columbia, is a vast area of land, 6.4-million hectares.

The M-KMA has been legally established to conserve wilderness, wildlife and cultural values in perpetuity.

To note:

- 75 per cent of the area is open for industrial resource extraction.
- 25 per cent of the area has been designated as protected areas and provincial park
- The Advisory Board is working to increase awareness of natural resource opportunities so they can be fully realized for the benefit of the province as a whole.
- The Advisory Board is also working to increase awareness that resource development in the M-KMA is subject to a highest form of environmental standards that conserve wilderness, wildlife and cultural values.



The unique wilderness and natural resources of the M-KMA transcends its borders and it is integral to the lives of the First Nations people, their communities, and other residents who live in and around the area.

The experiences in the M-KMA provide lessons that are of benefit to all British Columbians. First, it is a model in land-use planning, which clearly shows the benefits of consensus-based decision making. Second, it demonstrates that resource development, wilderness, wildlife, and cultural values can co-exist. These experiences are invaluable as we move forward and could be applied elsewhere.



Muskwa-Kechika Advisory Board

M-KAB Mission

“Provide respected and trusted advice that ensures the dynamic ecosystems, wilderness, wildlife and cultural diversity of the Muskwa-Kechika Management Area are maintained in perpetuity”

Membership:

The Muskwa-Kechika Management Plan regulation states:

“The Premier will appoint up to 17 members to the Advisory Board, including a Board Chair, such that the Advisory Board represents a broad range of interests. These would include, but not be limited to, First Nations, environmental groups, business, labour and Fort Nelson and Fort St. John Land and Resource Management Plan participants. Kaska Dena representatives would be appointed in accordance with the Letter of Understanding between the Kaska Dena Council and the Province of British Columbia, signed September 24, 1997.”

The list of members in 2007-08 and a brief biography is in Appendix 1.

Responsibilities of the M-KAB:

- conducting semi-annual reviews of the issuance of tenures and approval of operational activities to examine the achievement of management plan objectives through local strategic planning and operational activities;
- reporting, at least annually, to the public and the Premier on the results of the Board's semi-annual reviews and any other issues related to the management of the Muskwa-Kechika Management Area;
- providing advice to the Inter-Agency Management Committee on corporate priorities for and coordination of local strategic planning in the Muskwa-Kechika Management Area;
- facilitating provincial, national and international exposure of the values and management of the Muskwa-Kechika Management Area;
- supporting the initiation of local strategic plans for the Muskwa-Kechika Management Area, to achieve the management plan objectives;
- ensuring adequate public consultation in the preparation and approval of local strategic plans, amendments to the Muskwa-Kechika Management Plan, any other significant policy issue for the Muskwa-Kechika Management Area, or as requested by the Inter-Agency Management Committee;
- providing recommendations to the Environment and Land Use Committee on any proposed amendments to the Management Plan.

For the purposes of this report, it is noted that the M-KAB has been provided contracted support services that assists them to:

- maintain a public information office located in Fort St John
- maintain and update a website for public information regarding the M-KMA and also provides a secure web page for Advisory Board members to keep up to date with all Advisory Board business
- provide administration support services for all the logistics for meetings and teleconferences and an interface with the public
- professional services support to initiate project work, formulating advice to government, internal Board operation policies and procedures and maintain contact with government agencies on behalf of the Advisory Board.

Muskwa-Kechika Advisory Board

The Strategic Plan and Direction document provides details on the operation of the Advisory Board.

The M-KAB meets twice annually and if needed three times. Meetings rotated in 2007-08 between the communities of Mackenzie, Fort St John and Fort Nelson.

The Executive Committee of the Advisory Board meets monthly to ensure ongoing Advisory Board business is tracked and followed through on.

The following briefly highlights the responsibilities of the 5 program areas of the M-KAB. Each committee usually meets monthly to follow through on their projects and initiatives and they report out at each Advisory Board meeting.

Knowledge and Understanding

- Collecting, disseminating and understanding information, data and knowledge used in decision-making within the M-KMA

Resource Management

- Developing and implementing decision-making processes and practices regarding the maintenance of the wilderness, wildlife, ecological, cultural values within the M-KMA and the management of renewable and non-renewable socio-economic resources and activities in the M-KMA

Monitoring and Reporting

- Measuring progress toward the Vision for the M-KMA

Awareness and Support

- Building a constituency of advocates for the M-KMA

Organizational Development

- Strengthening the institutional and administrative structures supporting Advisory Board work



IAMC 2007-2008 Overview

The M-KAB has not received a 2007-08 report from the northern IMAC at the time of writing this annual report.

It is imperative for the government agencies to establish a reporting mechanism on all annual activities that take place in the Muskwa-Kechika Management Area and provide this to the Advisory Board by June of each year.

This will allow the Advisory Board to review these activities and ensure they are consistent with the M-K Management Plan Regulation and approved local strategic plans.



Based on the 2006-2007 IAMC report it is noteworthy that:

- Mineral claims continue to increase within the M-KMA, however on the ground activity has been limited to the Davis Keyes area, one company has 6 claims and is exploring for copper.
- No timber harvesting occurred in the M-KMA in 2006-07 in either the Mackenzie, Fort Nelson or Peace Districts of the Ministry of Forests
- There are over 30 grazing permits and licenses in the M-KMA that are issued to guide outfitters, transporter and horse ranchers.

The Muskwa-Kechika Advisory Board is also concerned about mountain pine beetle in the M-KMA and continues to have ongoing discussions with the Ministry of Forests regarding the current status of the mountain pine beetle and the approach they will take if the problem escalates.

As well, wind power generation is a new resource activity being considered provincially. The M-KAB has had discussions with government on current applications in the M-KMA. Based on the current legislated vision and management objectives of the M-KMA, the Advisory Board is working to determine if this resource activity is appropriate within the management area.

The Advisory Board continues to work closely with all the regulatory agencies that have management responsibilities in the M-KMA so that it can provide timely advice as necessary.

M-KAB Advice to the Government

The M-KAB continues to provide advice to the provincial government in terms of finalizing the required local strategic plans listed in the *Muskwa-Kechika Management Plan Regulation*.

Of importance to complete are:

- The Wildlife Management Plan
- The provincial park/protected area management plans
- Updating the recreation management plan to include the Mackenzie portion of the M-KMA
- Upgrading of the Upper Sikanni Management Plan to a Pre tenure plan

The M-KAB also wants to ensure that these plans are integrated and that they will provide the direction required for resource activities that will ensure the wildlife, wilderness and cultural values are sustained in perpetuity.

The M-KAB has been consistently requesting the provincial government to update the M-K Legislation and the Regulation to bring it up to date to include the Mackenzie addition, reflect current government organization and ensure that the long term commitment from government for the M-KMA is detailed. A working committee of government staff and M-KAB members was struck in 2007-08 to prepare for updating the Muskwa-Kechika Management Plan Regulation.

Further, the M-KAB continues to gather information on various management activities and tenure processes so that it can provide timely and valuable advice to the provincial government.

The M-KAB will continue to press government to establish an annual reporting mechanism on all management activities in the M-KMA. This is a critical aspect that will allow the Advisory Board to fulfill its role in reviewing and ensuring these activities are consistent with the M-K Management Plan Regulation and local strategic plans developed for the M-KMA.



The M-KAB is also requesting the provincial government to provide a long term commitment and stability to the M-KAB and the M-KMA that includes annual funding for the operation of the Advisory Board.



Projects and Achievements

2007 Youth Camp:

Hosted by the Kaska Dena Tribal Council, this year's youth camp was up at Sandpile, a 3.5 hour boat ride up the Turnagain River. It is located in the north west portion of the Muskwa Kechika Management Area.

Eight Youths along with three elders, two cooks and three counsellors took part in this years camp that features education in First Nations culture, traditions and values and related to the land. You can review the full report on our website.



Strategic Land Use Planning Implementation Project

As directed by the Minister responsible for the M-KMA, Pat Bell, the Advisory Board completed this project that was initiated in 2006. The report was finalized in June of 2007 and forwarded to Minister Bell for his review and acceptance of the report.

Currently, the provincial government is consulting with First Nations on this report and once consultation is completed and the report accepted by government, the M-KAB will work with government to implement the recommendations. It will be up to government to determine if this report can be released to the public.

State of the M-KMA report

Funding was provided for a contract to be issued to draft the first ever State of the M-K report. The M-KAB views this report to be critical to the long term management and sustainability of the M-KMA.

The Advisory Board is currently working through this draft and expects to finalize and print this report for public distribution in November of 2008. Once completed, it will be posted on the M-K website.

UNBC Partnership Agreement:

The M-KAB and UNBC have had a partnership agreement in place since 1999. The agreement established the Ian McTaggart M-K Professorship, and provided funding for an endowment with UNBC for research work in the M-KMA.

The agreement expired in March of 2007 and a new agreement has been drafted. The agreement has been strengthened that will allow for a continued positive working relationship between the two parties and provide long term support for research activities in the M-KMA.

This partnership won a Premiers bronze award for innovation and excellence in 2007. Details are found on our website.



M-KAB Financial Report

Table : Muskwa-Kechika Advisory Board Expenditures April 1st, 2007-March 31st, 2008 (Voted Funds)

Project Number	Project Title	Base Allocation in the M-KAB	Funding in the M-Expenditure	Expenditure March 31, 2008
MK08-01	Planning and Research Integration Project (PRIP)		\$10,000.00	\$0.00
MK08-02	Overarching Management Framework for the M-KMA		\$5,000.00	\$0.00
MK08-03	M-KMA Traditional Knowledge Strategy Implementation		\$5,000.00	\$765.00
MK08-04	Stone's Sheep Steering and Science Committee		\$15,000.00	\$5,154.95
MK08-05	Mining Orientation and Guide Book for the M-KMA		\$10,000.00	\$1,412.02
MK08-06	Strategic Land Use Planning Implementation Framework (SLUPIF)		\$70,000.00	\$43,212.31
MK08-07	State of the M-KMA Report		\$30,000.00	\$34,880.00
MK08-08	Implementation of the Communication Plan		\$20,000.00	\$17,254.25
MK08-09	M-KMA Youth Training Opportunities		\$75,000.00	\$75,000.00
MK08-10	M-K Information Office Communications		\$20,000.00	\$18,565.78
MK08-11	Annual Report to the Premier		\$5,000.00	\$2,021.87
MK08-12	UNBC Partnership		\$10,000.00	\$10,000.00
MK08-13	M-K Chair Honorarium		\$24,000.00	\$24,000.00
MK08-14	M-KAB Strategic Professional Services		\$24,000.00	\$10,642.50
MK08-15	M-KAB Support Costs, Travel and Meeting Rooms		\$45,000.00	\$35,516.16
MK08-16	M-K Information Office Rental, Coordinator & Supplies		\$115,000.00	\$106,659.99
MK08-17	M-K Project and Committee Professional services		\$48,000.00	\$41,325.71
*	M-K Youth Camp Treaty 8 Tribal Association Grant			\$25,000.00
*	Credit from previous fiscal			-\$2,239.63
Total Expenditures 2007-2008			Total	\$449,170.91



Appendix 1: Board Member Biographies



Tom Briggs and his wife Karen moved to Mackenzie, BC in 1974 where they raised their two children. Tom is community-minded and was involved in municipal politics, beginning his political career in 1986 and ending in 2005. He served 7 years as a Councilor followed by 12 years as Mayor. During his political tenure, Tom served on many Boards and Committees including Director of the Regional District of Fraser-Fort George, Chair of the Northern Treaties Treaty Advisory Committee, Chair of the Northern Development Initiative Trust Prince George Regional Advisory Committee and Director of the North Central Municipal Association, to name a few. He continues to play an active role in the District of Mackenzie. Tom was appointed as the Chair of the M-KAB in May of 2007 and is also Chair of the M-K Awareness and Support Committee.



Bill Lux represents the Dease River First Nation. Bill is the Kaska Dena Council Executive Vice-Chair, Lands and Resources. As one of four Kaska Dena members on the M-K Advisory Board, Bill is dedicated to representing the Dease River First Nations perspective on land use and resource planning and management in the M-KMA.

Jason Lee is currently employed as a wildlife biologist with the Treaty 8 Tribal Association. The Treaty 8 Tribal Association represents six of the BC Treaty 8 First Nation communities. He is a graduate of the University of Northern British Columbia and Malaspina University College. With a diverse background in natural resource management, he has worked in wildlife and fisheries research, as a Park Ranger (South Peace and South Tweedsmuir Provincial Parks), in the forestry and mining exploration industry, and as a search and rescue technician with the Canadian Coast Guard.



Corrine Porter is a member of the Kaska Nation and employee for the past 10 years. Currently residing in Watson Lake and recently graduated with a Natural Resource Science Bachelors Degree from the University College of the Caribou. Corrine is the Executive Director of Dena Keyah Institute. She participates on the North Peace Stone's Sheep Steering Committee, the Yukon Forest Management Committee, the Boreal Leadership Council and the Northern Nations Alliance.



Stephanie Killam is Mayor of Mackenzie and a municipal council member for 9 years, has worked as the senior secretary at Mackenzie Secondary School since 1979. Married for 39 years, she and her husband Donald have raised two children. She has served on the Museum Society, Club 55 (seniors activities), the Chamber of Commerce, the Municipal Emergency Program, the Mackenzie and Area Health Advisory Committee, the Mackenzie and District Hospital Board, Community Health Council, Northern Interior Regional Health Board and Children's and Women's Health Centre as well as many others. Committed to the community and region and well versed in environmental issues, Stephanie works to strike a balance between conservation and economic development.



Dixie Hammett began her career as a Licensed Physical Therapist, Director of Hand Therapy Services at RHD Memorial Medical Center in Dallas Texas. Past President of the Northern BC Guides Association she is now on its Executive and is Chair of the Finance and Fish, Wildlife, Habitat Issues Committees and the Guide Outfitters Association of BC. She currently co-owns and operates Sikanni River Outfitters near Pink Mountain B.C.



Shelley Middleton is a resident of Ft Nelson, B.C. and Regional Councilor for the Town of Fort Nelson and Northern Rockies Regional District, currently holds the Tourism, Parks and Environment portfolios. Shelley also represents the NRRD as a Director-at-Large on the Northern Rockies Alaska Highway Tourism Association board. Shelley acts as NRRD liaison with BC Parks, the Fort Nelson Historical Society and the Fort Nelson LRMP Monitoring committee. She brings a local government and wilderness tourism perspective to the M-KAB.



Wayne Sawchuk, an experience backcountry horseman and nature photographer, brings a conservation perspective to the Advisory Board as well as extensive knowledge about forestry and oil and gas. Actively involved in the planning processes that led to the creation of the M-KMA, he is the winner of the 2006 Canadian Environment award. As a photographer he has captured a diverse wildlife and outdoor subjects with skill and artistry, and has donated many photographs for use in M-K publications including the M-K Annual Reports.



Barry Holland, a big game hunter, pilot and backcountry traveler, brings experience to petroleum and natural gas technology as well as occupational safety. Barry actively participated in the Fort St John LRMP process prior to being appointed to the M-K Advisory Board



Andy Johnson is currently the Area Business leader for Spectra Energy. Previous to this, he worked as the Small Business Officer and Planning Officer for the Ministry of Forests. Mr. Johnson obtained a Bachelor of Science in Forestry at the University of British Columbia and he is currently a member of the Association of BC Professional Foresters.

Appendix 1: Board Member Biographies

Laurie Montour is from the Mohawk Nation of Kahnawake, and turtle clan – the embodiment of the Earth. She is currently working as director of the Lands & Resources Department of Fort Nelson First Nation. Although Laurie is trained as an ecosystem biologist, she has gone beyond that with her work with Native communities over the past 21 years. There is a real spiritual and emotional connectedness to the earth and all living things which cannot be separated from intellectual reasoning or biophysical calculations. When she listens to elders and people who harvest directly from the land for sustenance, she is still amazed at the depth of knowledge and wish that the professors and scientists were present to learn from them too. Laurie has discovered that the most learned ones are those admitting to not enough knowledge and still seeking answers.

Gerry Hunter is a resident of Halfway River First Nation, BC, Gerry Hunter was born and raised in the North Peace. Gerry worked in the mountains wrangling and guiding since he was thirteen years of age Gerry has also been involved with the Oilfield and Forestry for the past 25 years. He has had the opportunity to take part in several First Nation organizations including Treaty 8 Tribal Association and Halfway River First Nation. Gerry has also owned a family business for the past 21 years and the Company is still going strong. Gerry Hunters pet project is raising bucking bulls for rodeo producers. He also enjoys outdoor activities such as fishing, hunting and camping because all three activities involve using horses.



Darrell Regimbald is a registered professional forester with over 20 years experience in the public and private sectors managing forest resources (timber, recreation, wildlife habitat, silviculture). Currently, he is a Strategic Planning Forester with Canadian Forest Products Ltd. Prior to this, Mr. Regimbald was a Silviculture Forester and Silviculture Audit/Stand Tending Forester with the BC Ministry of Forests. Mr. Regimbald has been active in ecosystem restoration activities in the Rocky Mountain trench. In the communities he has lived in, he is a member and President of the Fort Nelson Historical Society and was a volunteer Fireman for the Radium Hot Springs Fire Department. In addition, he was the Chair of the Fort Nelson Timber Supply Area Steering Committee and past Chair of the Invermere Forest District Joint Health and Safety Committee. In 2006, Mr. Regimbald was awarded the Fort Nelson Friend of the Forest award. He holds his Bachelor of Science in Forestry from the University of Alberta and diploma in advanced silviculture from the University of BC.

Tim Trapp is a member of Kwadacha First Nation and have lived in northern British Columbia all of my life, with the last 6 years in and around Kwadacha. I have worked on both sides of forestry, as a grader operator for logging companies, and more recently with education in forest resource technology, helping with planning, silviculture and program development for Kwadacha Natural resource Agency in Kwadacha. His recreational activities coincide with daily needs of sustenance, hunting and fishing, and hiking. His interest in this M-KMA is for the people of Kwadacha and myself and my family and future generations of people in Kwadacha to help protect and preserve it.

Peter Stone is a member of the Kaska Dena Nation of Liard River and represents the Muncho area & Kwadacha First Nation. Peter is involved in the oil and gas industry, providing consultation services that link the aboriginal community and petroleum businesses together. He was born and raised in the M-KMA, and has worked in a variety of occupations including forestry, mining, trapping and assistant game guiding.



Johnny Mikes started working river rafting trips in northern BC as a boy with his father in the early 1970's. He has guided wilderness river, hiking and natural history trips for over 30 years and is very familiar with many remote areas of northern BC including much of the Muskwa-Kechika as well as portions of the Yukon and Canadian Arctic.



Kristy Emery is the Director of Advisory Services for Equity Exploration Consultants Ltd., a Vancouver-based firm specializing in turnkey project management for mineral exploration companies. Prior to this, Kristy was the Director of Policy and Sustainability for AME BC (the Association for Mineral Exploration BC). As well, she held various senior positions for the Ministries of Energy, Mines and Petroleum Resources; Agriculture and Lands; and Aboriginal Affairs.

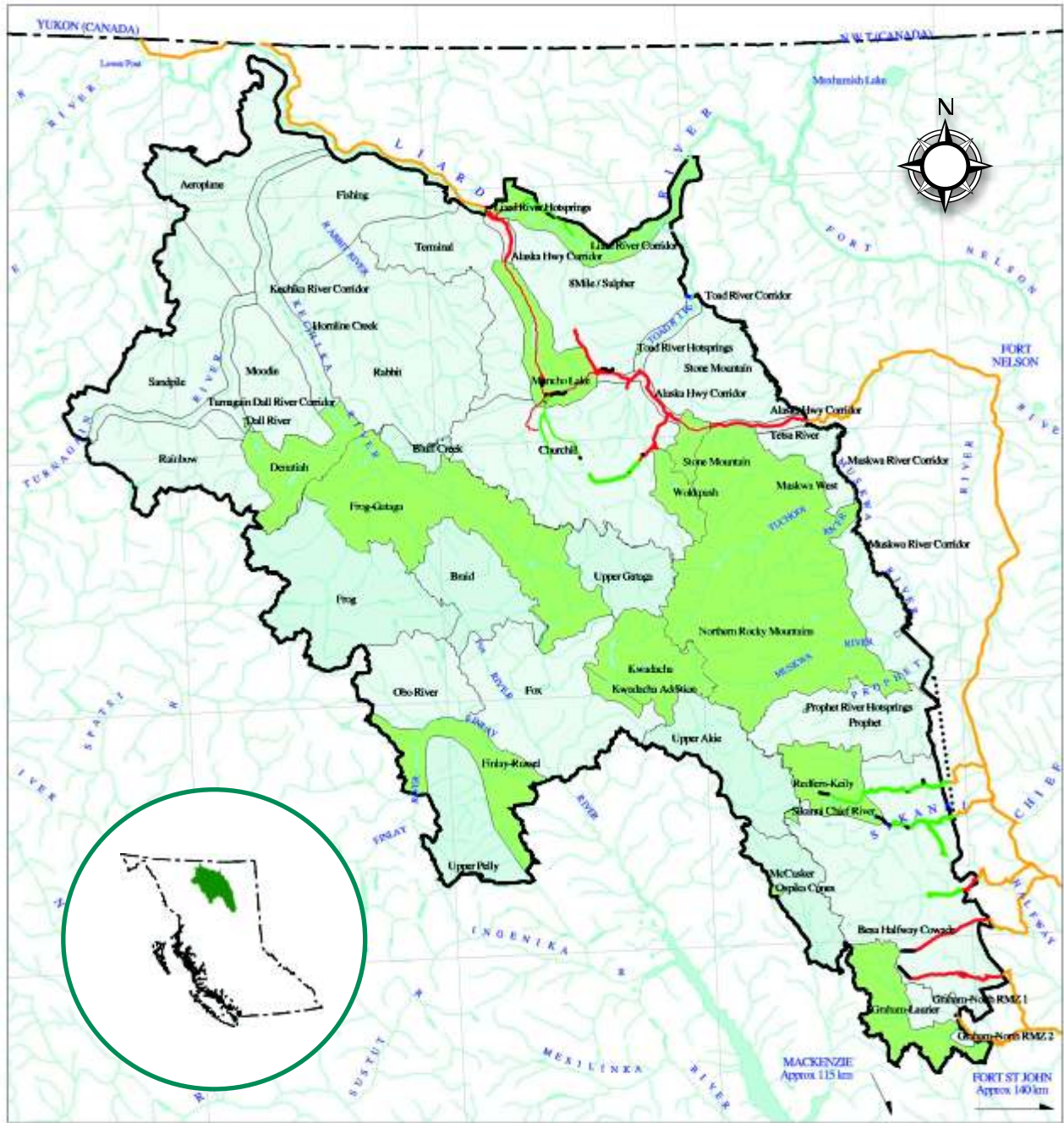
Kristy is a Director of the Britannia Beach Historical Society and has been involved with the Victoria Family Planning Centre and the Pacific Opera.

Kristy holds a Bachelor of Commerce, with specialization in Entrepreneurial Management, from Royal Roads University in Victoria.



MUSKWA-KECHIKA
MANAGEMENT AREA
www.muskwa-kechika.com

One of North America's true wilderness areas south of the 60th parallel.

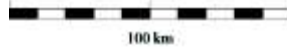


A vast mosaic of protected areas and special management zones.

- Total area: 6.4 million hectares
- Protected Areas: 1.64 million hectares
- Special Management Zones: 3.63 million hectares
- Special Wildland Zones: 0.92 million hectares



Produced by Geoff Helton
Muskwa-Kechika
Peace Region GIS Section
August 28, 2001



- Protected Area/Proposed Protected Area/Ecological Reserve
- Enhanced Resource Development
- Special Management
- Special Wildland
- Travel is restricted to within 400m of route (Restricted to Alaska Highway right-of-way through Muncho Lake, Stone Mountain, Northern Rocky Mountains Provincial Parks/Protected areas)
- Travel is restricted to within 10m of route
- Travel is restricted to within 400m of route (vehicles under 500kg only)
- Travel is restricted to within 10m of route (vehicles under 500kg only)
- Closed to all motor vehicle travel (snowmobiles exempt)
- Roads and trails not within Muskwa-Kechika Management area