



SUMMARY RESULTS

Investigating Potential Impacts of Wind Power Development in the M-KMA – Physical Feasibility Maps

MICHELINE SNIVELY¹

MARCH 04, 2011

¹Wildlife Infometrics Inc., PO Box 308, Mackenzie, BC, V0J 2C0, wild_info@wildlifeinfometrics.com

Prepared for Ministry of Agriculture and Lands under contract #CFSAL1102

CITATION: Snively. M. 2011. Investigating potential impacts of wind power development in the M-KMA – Physical feasibility maps. Wildlife Infometrics Inc. Report No. 368. Wildlife Infometrics Inc., Mackenzie, British Columbia, Canada.

TABLE OF CONTENTS

LIST OF TABLES.....	i
LIST OF FIGURES	i
INTRODUCTION	2
Physical Feasibility Maps	3

LIST OF TABLES

Table 1. Physical Feasibility Maps Listing.....	3
---	---

LIST OF FIGURES

Figure 1. Key Map for the physical feasibility maps.....	4
--	---

INTRODUCTION

The purpose of this document is to acknowledge the delivery of a series of maps used to identify portions of the Muskwa-Kechika Management Area (M-KMA) where wind power development is or is not constrained by physical terrain elements. The series of maps were the product of the physical feasibility model discussed in the report entitled "*Investigating Potential Impacts of Wind Power Development in the M-KMA – Physical Feasibility Model Methods and Spatial Data Summary*"¹.

The maps were delivered in fulfillment of deliverable 3² of a contract CFSAL1102 for the '*Investigative Impacts of Wind Power Development in the M-KMA*' project being undertaken for the Muskwa-Kechika Advisory Board.

The Physical Feasibility Maps section lists all maps submitted for both the existing Investigative Use Permits (IUPs) and the potential wind power development areas (PWPDA). A key map was provided to assist in locating each of the physical feasibility maps.

¹ Snively, M and V.J. Brumovsky. 2010. Investigating Impacts of Wind Power Development in the M-KMA – Physical Feasibility Model Methodology and Spatial Data Summary Revision 1. Wildlife Infometrics Inc. Report No. 367. Wildlife Infometrics Inc., Mackenzie, British Columbia, Canada.

² Excerpt from contract: "3. On delivery of physical feasibility map(s) of identified portions of the M-KMA that show where wind power development is or is not constrained by physical terrain elements."

Physical Feasibility Maps

Please see Table 1 below for a listing of the physical feasibility maps associated with this report and **Error! Reference source not found.** for the key map identifying the location of each physical feasibility map.

Table 1. Physical Feasibility Maps Listing

Filename	Source
MKMA_Physical_Feasibility_Existing_IUP_1	
MKMA_Physical_Feasibility_Existing_IUP_2	
MKMA_Physical_Feasibility_Existing_IUP_3	
MKMA_Physical_Feasibility_Existing_IUP_4	
MKMA_Physical_Feasibility_Existing_IUP_5	
MKMA_Physical_Feasibility_Potential_IUP_1	
MKMA_Physical_Feasibility_Potential_IUP_2	
MKMA_Physical_Feasibility_Potential_IUP_3	
MKMA_Physical_Feasibility_Potential_IUP_4	
MKMA_Physical_Feasibility_Potential_IUP_5	
MKMA_Physical_Feasibility_Potential_IUP_6	
MKMA_Physical_Feasibility_Potential_IUP_7	
MKMA_Physical_Feasibility_Potential_IUP_8	
MKMA_Physical_Feasibility_Potential_IUP_9	
MKMA_Physical_Feasibility_Potential_IUP_10	
MKMA_Physical_Feasibility_Potential_IUP_11	WII
MKMA_Physical_Feasibility_Potential_IUP_12	
MKMA_Physical_Feasibility_Potential_IUP_13	
MKMA_Physical_Feasibility_Potential_IUP_14	
MKMA_Physical_Feasibility_Potential_IUP_15	
MKMA_Physical_Feasibility_Potential_IUP_16	
MKMA_Physical_Feasibility_Potential_IUP_17	
MKMA_Physical_Feasibility_Potential_IUP_18	
MKMA_Physical_Feasibility_Potential_IUP_19	
MKMA_Physical_Feasibility_Potential_IUP_20	
MKMA_Physical_Feasibility_Potential_IUP_21	
MKMA_Physical_Feasibility_Potential_IUP_22	
MKMA_Physical_Feasibility_Potential_IUP_23	
MKMA_Physical_Feasibility_Potential_IUP_24	
MKMA_Physical_Feasibility_Potential_IUP_25	
MKMA_Physical_Feasibility_Potential_IUP_26	

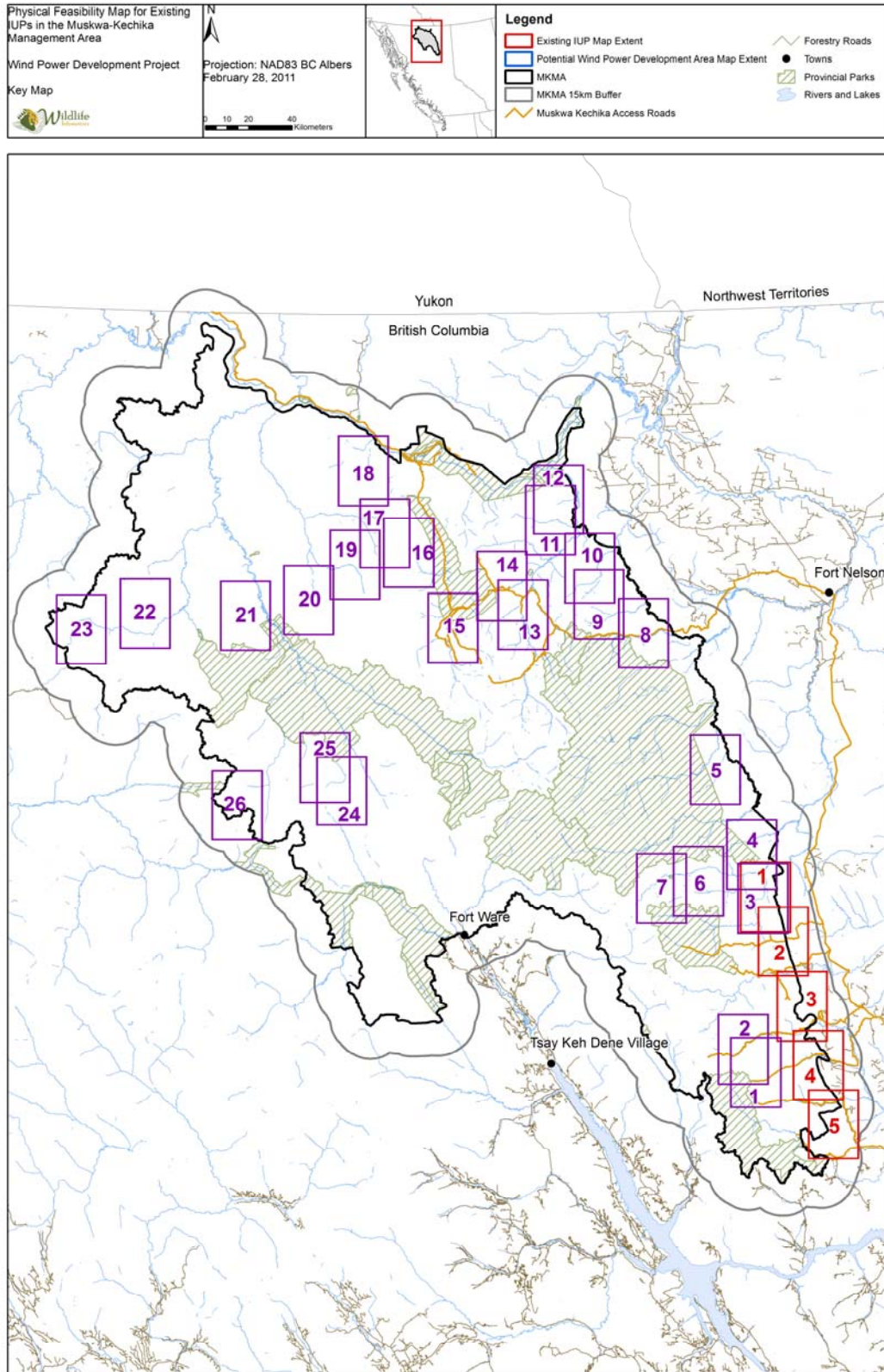


Figure 1. Key Map for the physical feasibility maps