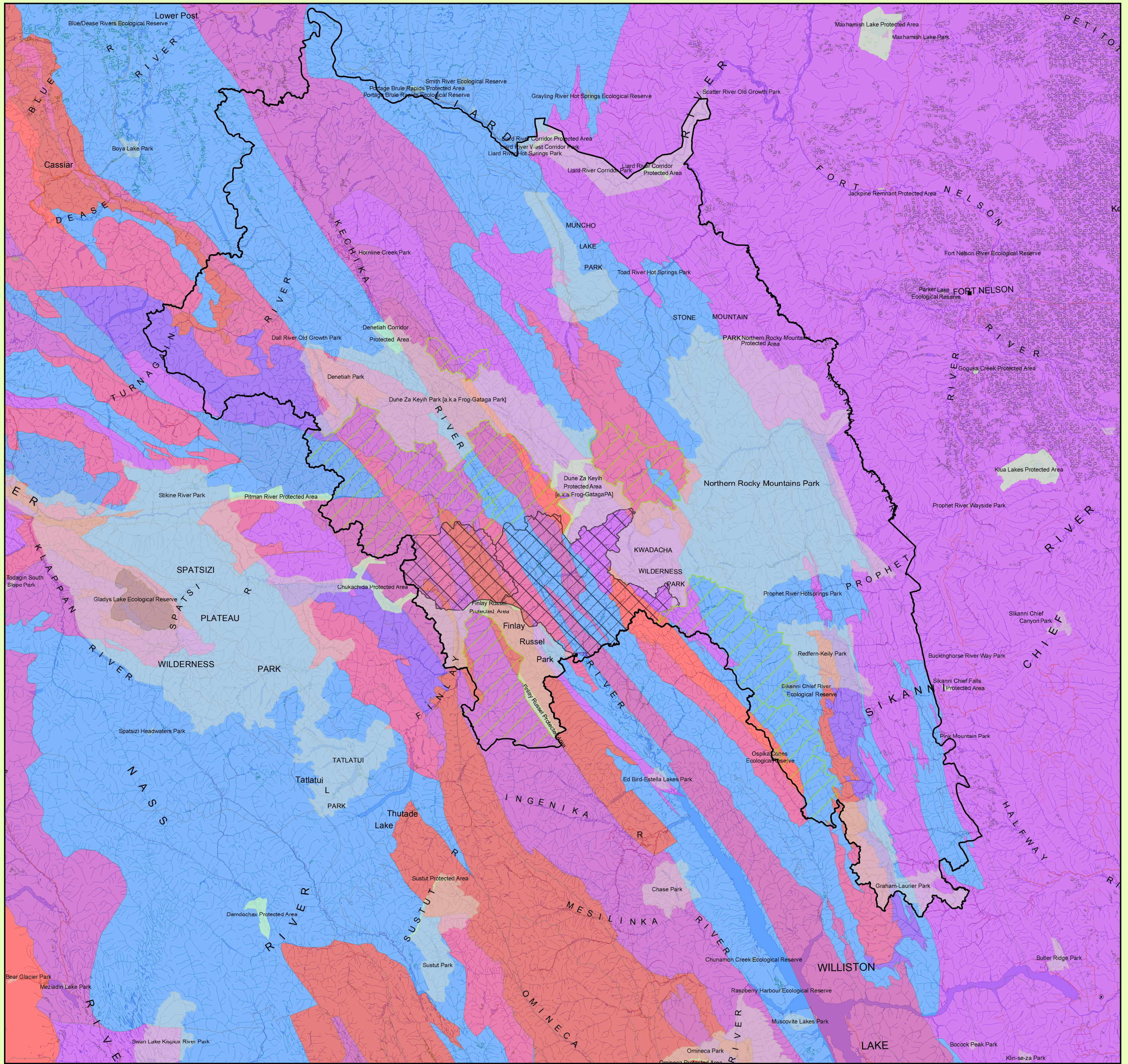






Muskwa-Kechika Management Area: Mineral Potential



Legend



-  Muskwa-Kechika Management Area Boundary
 Ecological Reserves
 Protected Areas
 Parks

Metallic Mineral Potential by Rank

- | |
|-------------------|
| 000 - 128 Lowest |
| 129 - 137 |
| 138 - 169 |
| 170 - 229 |
| 230 - 291 |
| 292 - 366 |
| 367 - 446 |
| 447 - 556 |
| 557 - 715 |
| 716 - 794 Highest |

Resource Management Zones

-  Enhanced
 General
 Special
 Special - Wildland

- Road
 Trail
 Rail Line
 River/Stream
 River/Lake
 Marsh

Mineral Potential Ranking

The tracts (794) are based on common geologic characteristics and are given a relative rank from 1 to 794 (highest) based on the likelihood of discovering new metallic mineral resources. These minerals are used as sources of metals. They include the base metals such as copper, lead, zinc, iron; and the precious metals such as silver, gold, platinum.

Use Limitation:

Assessments are based on the state of knowledge available in the period 1992-1997. New geologic mapping, mineral deposit discoveries and current commodity prices may significantly change the relative rankings of mineral potential tracts.

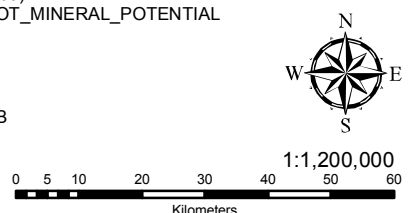
Data Sources and Notes

Boundary data gathered from the Land and Resource Data Warehouse
at giswhse.env.gov.bc.ca

Layer Files are:
Muskwa-Kechika Management Area Boundary - ILMB
P:\prg\arc\landuse\srp\muskwa

Mineral Potential (Revision 2006-06-03) - LRDW
 WHSE_MINERAL_TENURE.MINPOT_MINERAL_POTENTIAL

Parks and Protected Areas - MoE
P:\corp\arcwhse\prk\tpas bc

Resource Management Zones - ILM
P:\proj\arc\landuse\rmz

Produced for:

Muskwa-Kechika Advisory Board

Produced by:



BRITISH COLUMBIA

Integrated Land Management Bureau

Peace Service Centre

Filepath: W:\srm\nr\arcproj\fs\fs_07_0143_MT_PF_MK\fin\Projection\Datum: PC Albers/NAD83

Projection/Datum: BC Albers/NAD83
Date Created: 2008/03/04

Created by: Philip K.T. Lam
and Information Management