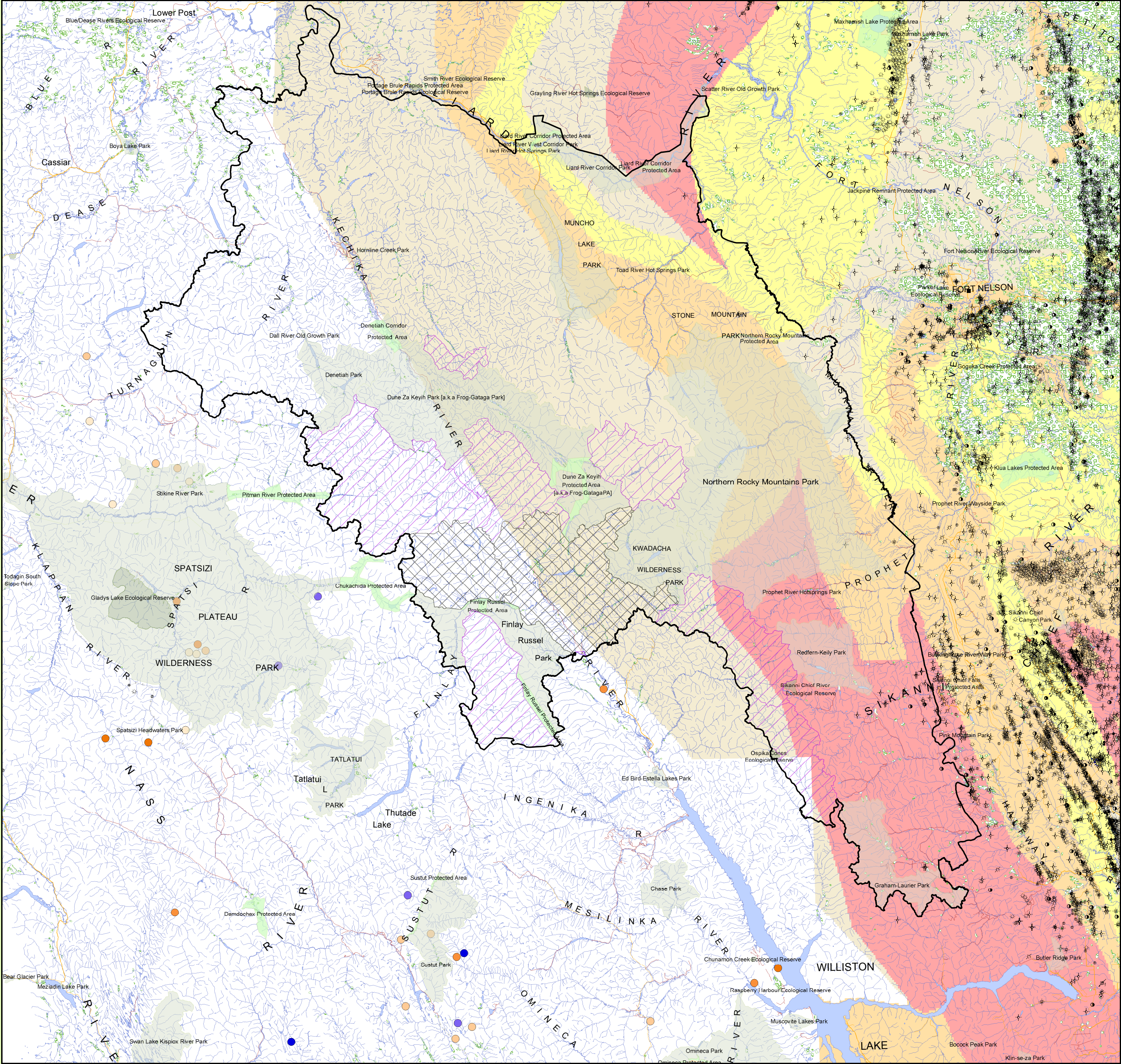


# Muskwa-Kechika Management Area: Oil and Gas Potential



## Legend

Muskwa-Kechika Management Area Boundary

### Gas Potential

- Low
- Medium
- High
- Very High

### Oil Potential

- None/Unknown
- Low
- Medium
- High
- Very High

### Resource Management Zones

- Enhanced
- General
- Special
- Special - Wildland
- Protected Areas
- Ecological Reserves
- Parks
- Road
- Trail
- Rail Line
- River/Stream
- River/Lake
- Marsh

### Wells

- Abandoned
- Abandoned Gas
- Abandoned Oil
- Abandoned Oil/Gas
- Cased
- Drilled
- Gas
- Well Authorization Granted
- Gas Injection/Disposal
- Observation
- Oil
- Oil and Gas
- Water Disposal
- Water Injection
- Water Source

The potential for any given area delineated by a polygon or point is expressed in volume of gas/oil reserves per meter squared. The Petroleum Geology Branch has refined the areas based on the analysis from the Geological Survey of Canada, Institute of Sedimentary and Petroleum Geology (ISPG) assessments where reserve discoveries within each play could be expected. A play is a geographically constrained package of rock layers within which gas or oil pools of similar type are expected to be found. Geological criteria included factors as trends of existing pools, subcrop/structural edges, location of gas tests, facies changes, etc.

### Data Sources and Notes

Boundary data gathered from the Land and Resource Data Warehouse at [giswhe.env.gov.bc.ca](http://giswhe.env.gov.bc.ca)

Layer Files are:  
Muskwa-Kechika Management Area Boundary - ILMB  
P:\prg\arc\landuse\srpmuskwa

Oil and Gas Potential - Ministry of Energy and Mines  
W:\srm\in\arcproj\lts\_07\_0143\_MT\_PF\_MK\src\OGPotential\nebc\_potgas  
W:\srm\in\arcproj\lts\_07\_0143\_MT\_PF\_MK\src\OGPotential\nwbc\_potgas1  
W:\srm\in\arcproj\lts\_07\_0143\_MT\_PF\_MK\src\OGPotential\wbc\_potoil

Oil and Gas Commission Wells - LRDW  
WHSE\_MINERAL\_TENURE.OG\_BOTTOM\_HOLE\_STATUS.SP

Parks and Protected Areas - MoE  
P:\corpl\arcwhe\srpltps\_bc

0 5 10 20 30 40 50 60  
Kilometers



Produced for:

Muskwa-Kechika Advisory Board



Integrated Land Management Bureau

Peace Service Centre

Filepath: W:\srm\in\arcproj\lts\_07\_0143\_MT\_PF\_MK\fin\

Projection/Datum: BC Albers/NAD83

Date Created: 2008/03/26

Created by: Philip K.T. Lam  
Land Information Management