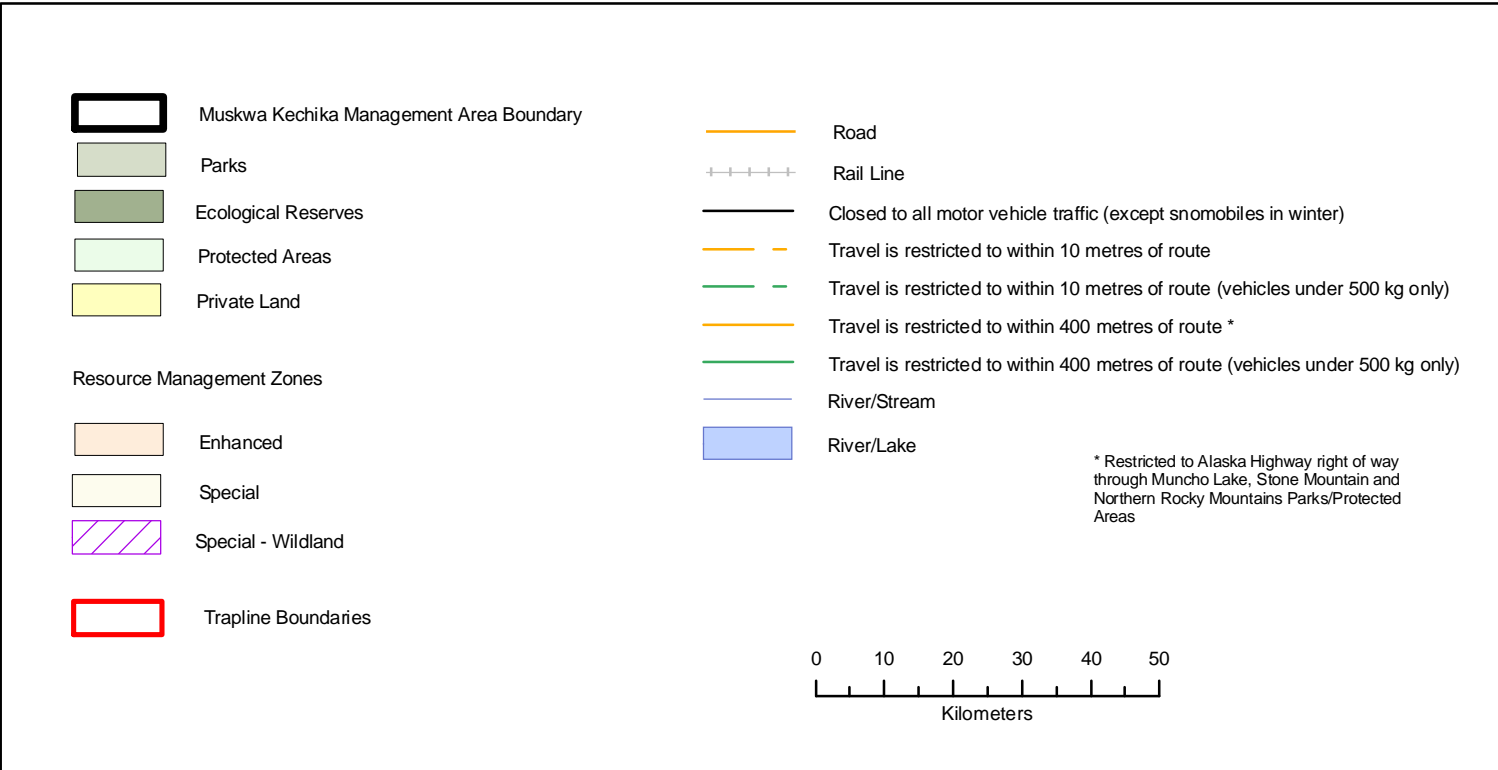
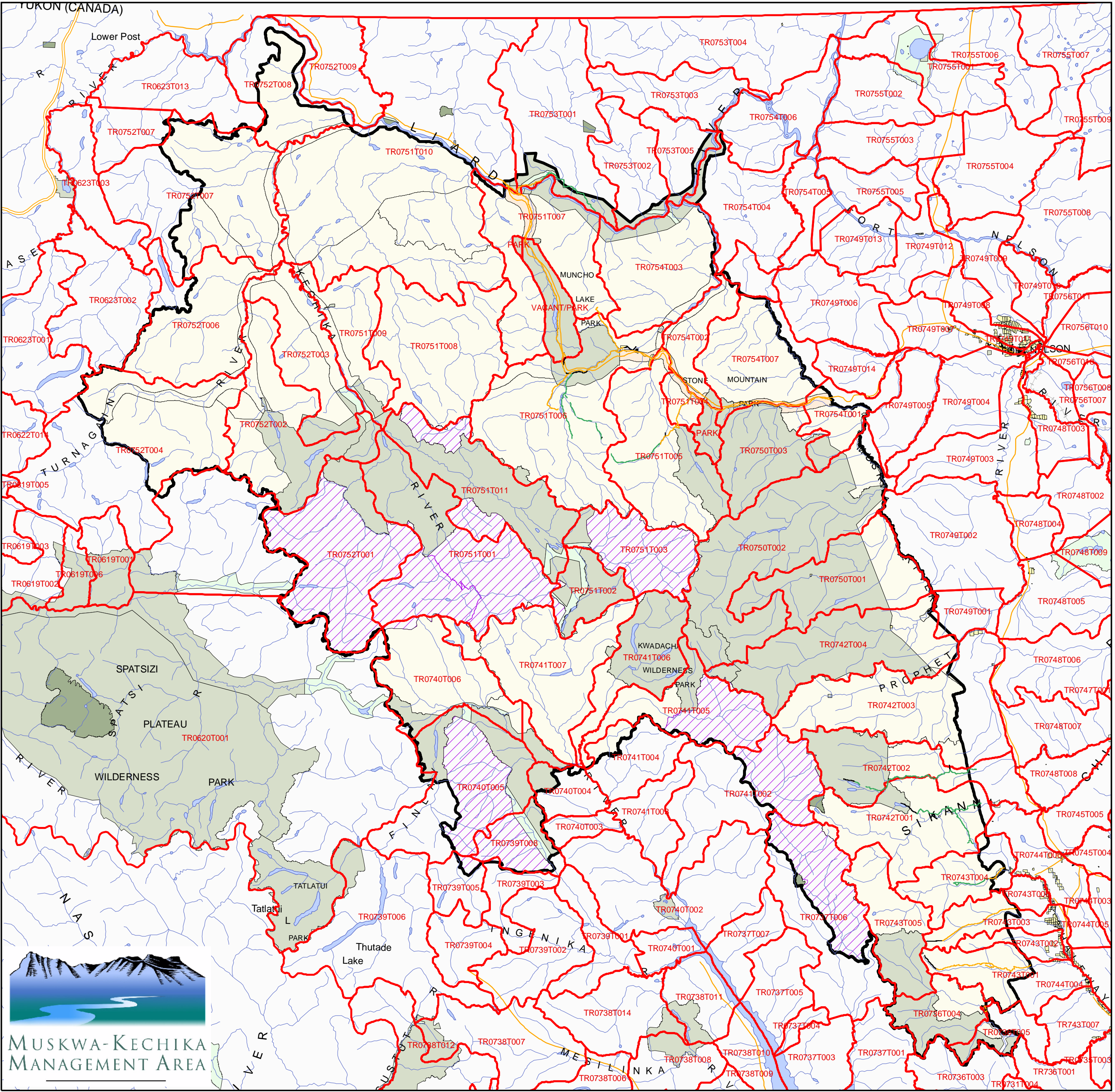


Muskwa Kechika Management Area: Trapline Boundaries (2006)



**Muskwa-Kechika Management Area
Trapline Boundaries (2006)**

Data Sources and Notes

Muskwa Kechika Management Area Boundary - Integrated Land Management Bureau (Peace)

Trapline Boundaries - Ministry of Environment (Peace and Omineca)

Muskwa Kechika Designated Access Routes - Ministry of Environment (Peace)

Parks and Protected Areas - Ministry of Environment

Resource Management Zones - Integrated Land Management Bureau (Prince George)

Private Land - Integrated Cadastral Fabric

Produced for:

Integrated Land Management Bureau - Peace

Produced by:

BRITISH COLUMBIA

Integrated Land Management Bureau

Projection/Datum: Albers/NAD 83
Date Created: April 26, 2006
Created by: Prince George Service Centre (SW)