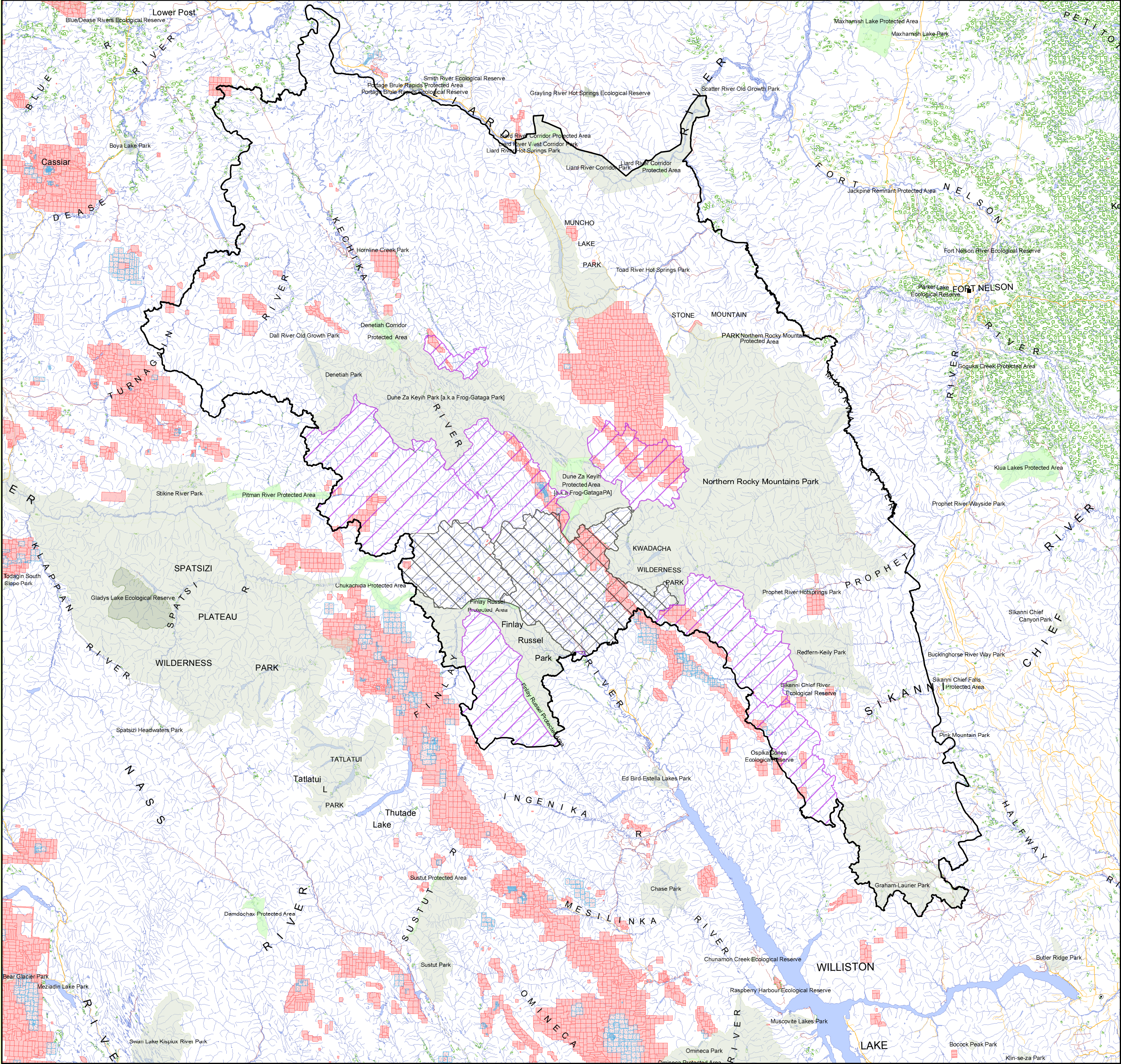


# Muskwa-Kechika Management Area: Mineral Tenures



## Legend

- Muskwa-Kechika Management Area Boundary
- Legacy Mineral Tenure (MiDA)
- Mineral Tenures
- Enhanced
- General
- Special
- Special - Wildland
- Protected Areas
- Ecological Reserves
- Parks
- Road
- Trail
- Rail Line
- River/Stream
- River/Lake
- Marsh

A tenure is a form of ownership of mineral rights over a parcel of land which has been located by a method set out in the legislation. A legacy tenure are those who gained ownership by ground staking prior to the legislation. The acquired tenure shape may be different from the located tenure shape due to previously located tenures or alienations.

MKMA Boundary Area: 6386094.0 Ha  
Mineral Tenures within Boundary: 408164.9 Ha (1161 Tenures)  
Legacy Mineral Tenures within Boundary: 4652.0 Ha (78 Tenures)

1:1,200,000  
0 5 10 20 30 40 50 60  
Kilometers

## Data Sources and Notes

Boundary data gathered from the Land and Resource Data Warehouse at [giswbase.env.gov.bc.ca](http://giswbase.env.gov.bc.ca)

Layer Files are:  
Muskwa-Kechika Management Area Boundary - ILMB  
P:\prg\arc\landuse\srpmuskwa

Mineral tenures - LRDW  
WHSE\_MINERAL\_TENURE.MTA\_LOCATED\_TENURE\_POLY

Legacy Mineral Tenure (MiDA) - LRDW  
WHSE\_MINERAL\_TENURE.MTA\_LOCATED\_TENURE\_POLY

Parks and Protected Areas - MoE  
P:\corp\arc\whse\prk\ltpas\_bc

Resource Management Zones - ILMB  
P:\prg\arc\landuse\rmz



Produced for:

Muskwa-Kechika Advisory Board

Produced by:



Integrated Land Management Bureau  
Peace Service Centre

Filepath: W:\srmin\larcproj\lfs\_07\_0143\_MT\_PF\_MK\fin\  
Projection/Datum: BC Albers/NAD83  
Date Created: 2008/03/03  
Created by: Philip K.T. Lam  
Land Information Management