

Muskwa-Kechika Program Manager
Office Copy

MUSKWA KECHIKA MANAGEMENT AREA

CLEANUP REPORT

REPORT

to

BC MINISTRY of ENVIRONMENT, LANDS & PARKS
POLLUTION CONTROL DIVISION

PEACE NORTHERN SERVICES LTD
TOAD RIVER, BC

TOM FULTON
CONSULTANT

TABLE OF CONTENTS

Proposal for Cleanup of Muskwa Kechika Management Area	Appendix 1
Contract #1 Site #1 Goat Creek #1	1
Fig. 1 to 9 - Goat Creek #1	2-6
Contract #1 Site #1 Goat Creek #2	7
Fig. 10 to 19 - Goat Creek #2	8-12
Contract #1 Site #1 Goat Creek #3	13
Fig. 20 to 24 - Goat Creek #3	14-16
Contract #1 Site #2 Trophy Valley	17
Contract #1 Site #3 Churchill Strip	18
Fig. 25 - Churchill Strip	19
Contract #1 Site #4 Mining Camp	20
Fig. 26 to 29 - Mining camps	21-22
Contract #1 Site #5 Racing River channel	23
Fig. 30 to 54 - Racing River channel	24-36
Contract #2 Site #6 Fort Reliance drill site	37
Fig. 55 to 61 - Fort Reliance camp	38-41
Contract #2 Site #7 Belcher Creek Mine site	42
Fig. 62 to 74 - Belcher Creek camp	43-49
Contract #2 Sites #8-11 Hunting campsites	50
Fig 75 to 87 - Hunting Camps	51-57
Contract #2 Site #12 Chischa Creek	58
Contract #2 Site #13 Granny Creek #1	58
Fig. 88 to 93 - Granny Creek #1	59-61
Fig. 94 - Granny Creek #2	62
Contract #2 Site #14-17 Dead Dog and Gatho	63
Fig. 95 to 99 - Dead Dog and Gatho	64-66
Contract #2 Site #18-19 Summit Lake	67
Fig. 100 - Tetsa River	68
Fig. 101 - Summit Lake	68

APPENDIX 1

PROPOSAL FOR CLEANUP OF MUSKWA KECHIKA MANAGEMENT AREA

**Peace Northern Services Ltd
Toad River, BC**

**Consultant
Tom Fulton**

PROPOSAL

**For cleanup of identified sites within
Muskwa Kechika Management Area**

By

**Peace Northern Services Ltd.
Box 25, Toad River, BC
V0C 2X0
(250) 232-5211, (780) 814-2452**

July 22, 1999,

Ministry of Environment, Lands and Parks
Room 400, 10003- 110th Avenue,
Fort St. John, BC,
V1J 6M7

Attention: Terry Sawchuck

Dear Terry,

Attached is a proposal for cleanup of a number of sites within the Muskwa Kechika Management Area. These sites include abandoned hunting and mining camps and drill locations and contain a variety of debris such as barrels, metal and buildings.

Most of the sites have been ground checked, but it is very difficult to do a cost estimate as it cannot be determined before starting the cleanup how many barrels are full or empty, or how much garbage is involved .

In addition to the detailed sites, we would, if requested, coordinate all other barrel cleanup that you have identified, once you supplied us with the locations and staging areas for deposit of the material.

As a number of these sites fall within Outfitter hunting areas, I would contact them and work to avoid conflict with hunting activities.

I feel, with my experience in aircraft utilization and knowledge of the area, and with a very experienced crew, we could accomplish this job as safely, economically feasible and ecologically sound as possible. If you require more information, please contact me at (250) 232-5211 or (780) 814-2452.

Sincerely,

Tom Fulton
Peace Northern Services

Peace Northern Service Ltd.

Resources:	One A350 A-Star helicopter One consultant- Tom Fulton Three labourers, experienced with helicopter activities Misc. equipment- radios, saws, hand tools, zodiak boat, meals and accommodation- supplied by Peace Northern
Site #1	Goat Creek- a fork of Churchill Creek
<i>Description</i>	4 abandoned buildings in bad condition with tin roofs, numerous pails, barrels, hoses, cables and garbage. It is not known if barrels are full or empty. Some barrels are at the edge of a small alpine lake.
<i>Work Proposed</i>	Remove metal roofing from buildings, pick up all debris and sling remove to a staging site at the road at Wokkpash Creek. Burn buildings (no fire hazard, as this site is above timberline). The remaining debris from the burn would be slung out to staging site. While waiting for buildings to cool, cleanup of sites #2-#5 in the area could be started.
Site #2	Trophy Valley- small creek running into Racing River south Of Wokkpash Creek
<i>Description</i>	Outfitter/resident hunter camp site containing numerous cans, old metal stoves, tarps, plastic and general garbage.
<i>Work proposed</i>	all garbage slung to staging site

Site #3	Main Churchill Airstrip- south of Trophy Valley on the Racing River
<i>Description</i>	some barrels, pails and burnt airplane frame
<i>Work proposed</i>	all garbage slung to staging site
Site #4	Between airstrip and Trophy Valley- near abandoned mine road
<i>Description</i>	prospector's campsite, consisting of a few barrels, metal stove and general garbage
<i>Work proposed</i>	all garbage slung to staging site
Site #5	Racing River channel- from mill site to Alaska Highway
<i>Description</i>	numerous rusty barrels, pails, cans, car batteries and general garbage.
<i>Work proposed</i>	all garbage slung to staging site, either at Wokkpash or to Alaska Highway. Everything would then be hauled to bin at Toad River Settlement or the old land fill site.
Site #6	Drill Site on Mountain top- south of Moose Lake
<i>Description</i>	abandoned drill site for prospecting, consisting of 15-25 barrels, pails, cable, and other garbage.
<i>Work proposed</i>	all garbage slung to staging site
Site #7	Prospector Camp- south and east of Moose Lake
<i>Description</i>	one metal sided skid shack, numerous barrels, pails and other garbage
<i>Work proposed</i>	all garbage slung to staging site

All garbage from sites #6 and #7 would then be hauled by truck to bin at Toad River Settlement

Site #8-#11	Outfitter/resident Hunting camps-numerous locations
<i>Description</i>	very messy abandoned hunting camps with assorted debris
<i>Work proposed</i>	all garbage could be slung to staging sites in conjunction with other sites, as these locations are scattered throughout the area.

Site #12	Chischa Creek
<i>Description</i>	reported (by Zonk of Northern Mtn. Helicopters) to contain 20-25 barrels
<i>Work proposed</i>	all barrels slung to Alaska Highway

Site #13	Granny Creek-near Kluachesi Lake
<i>Description</i>	last location filmed on Davis Keyes video, containing 20 to 25 barrels, pails and assorted garbage
<i>Work proposed</i>	all garbage slung to either Kluachesi Lake to be flown out or to the Muskwa River to be removed by boat

MUSKWA KECHIKA CLEANUP CONTRACT #1

CONTRACT #1 SITE #1 GOAT CREEK #1

COORDINATES: 58 21 38 125 08 28

INVENTORY

1 12x16 plywood shack
10 drums -empty
2 drums -full
1 drum assorted garbage (cans, pails, stovepipes)
2 metal stoves (heating, diesel)
1 drill site (boards, plywood)

DESCRIPTION

August 11

Moved crew, camp and helicopter fuel in from Toad River.

August 12

Started cleanup of Site #1. Gathered all drums and garbage from area. A number of drums were located in a small glacial melt pond. Plywood skid shack was emptied of all unburnable material. All garbage and small drums were collected from drill site, further uphill. Debris and shack was burned. (A total of 600 board feet) One net load of debris and two fuel drums were slung out with helicopter to staging site at Wokpash Creek to be hauled to Toad River dump site. Returned crew to campsite by helicopter.



Figure 1
 Site #1 Goat Creek #1
 Site prior to restoration



Figure 2
 Site #1 Goat Creek #1
 Site prior to restoration

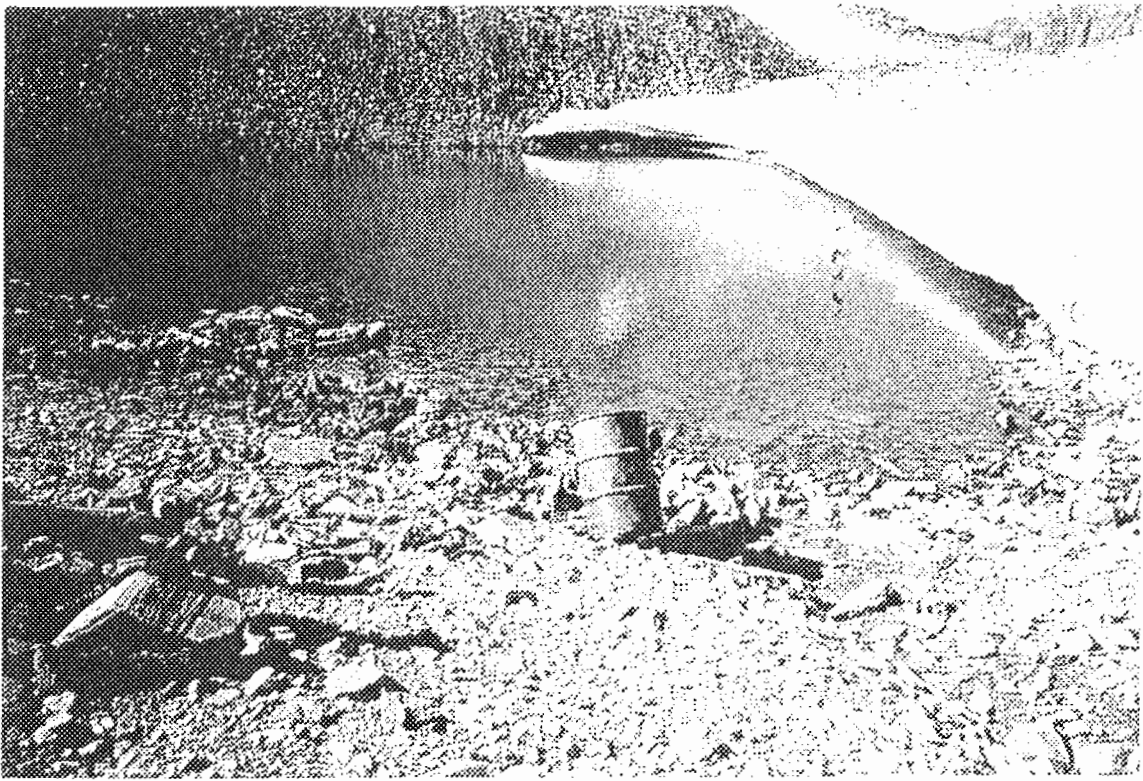


Figure 3
Site #1 Goat Creek #1
Barrel by small lake



Figure 4
Site #1 Goat Creek #1
Barrels to be slung

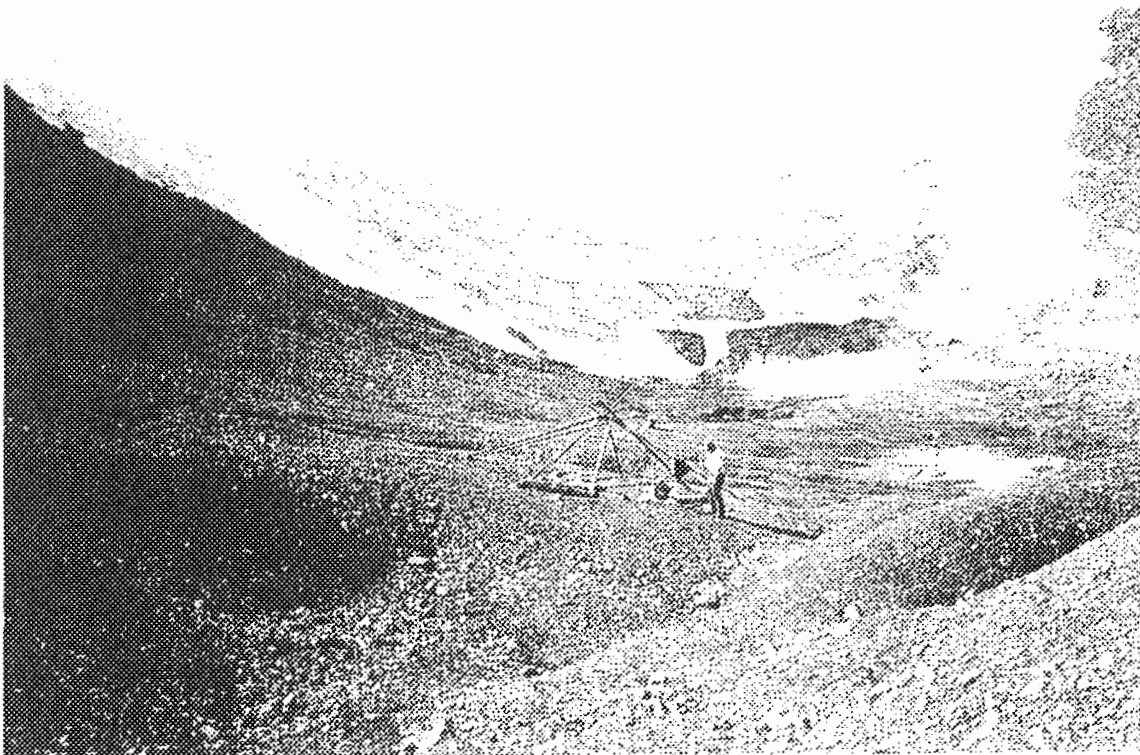


Figure 5
Site #1 Goat Creek #1
Drill site south of drill camp



Figure 6
Site #1 Goat #1
Drill site



Figure 7
 Site #1 Goat Creek #1
 Site restored

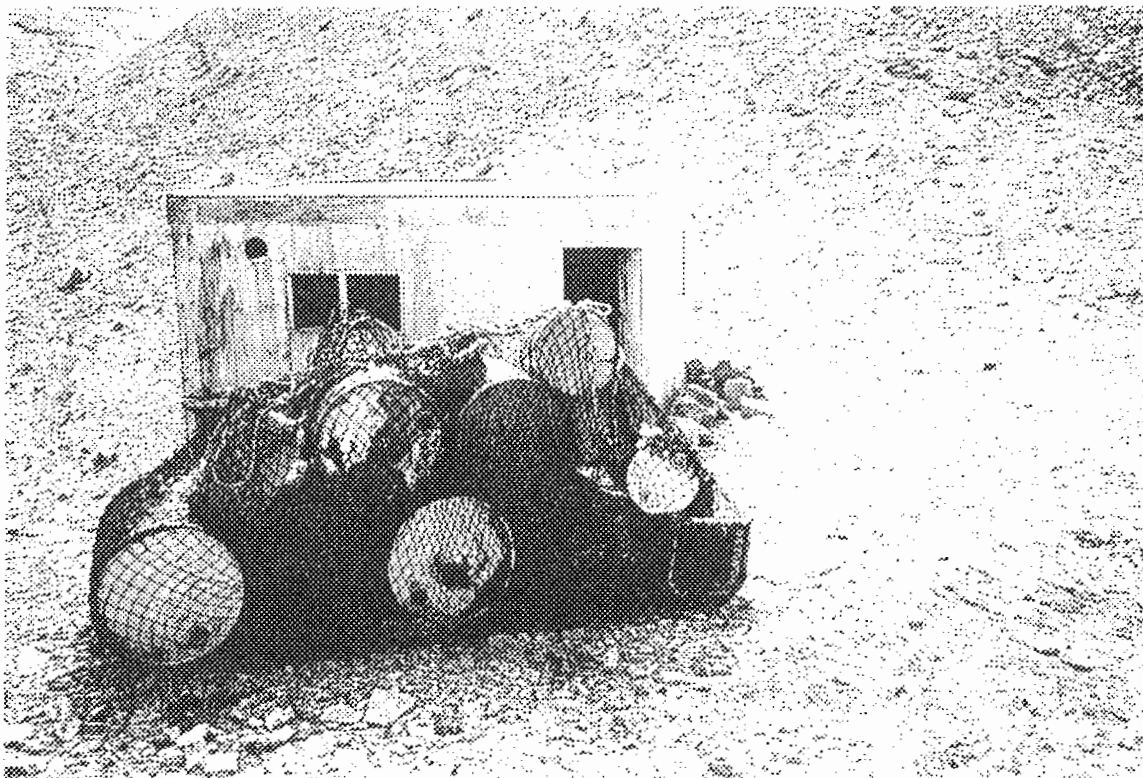


Figure 8
 Site #1 Goat Creek #1
 Sling loads

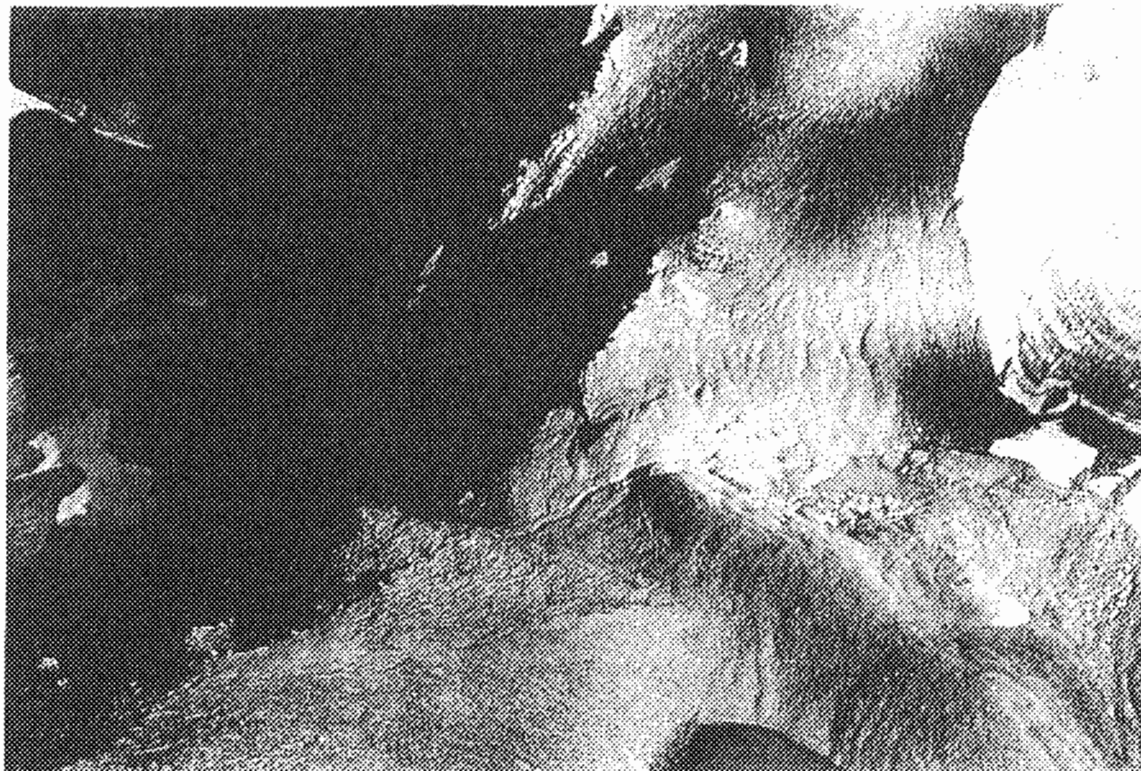


Figure 9
Site #1 Goat Creek #1
Site totally restored

MUSKWA KECHIKA CLEANUP

CONTRACT #1 SITE #1 GOAT CREEK #2

COORDINATES 58 21 58 125 12 28

INVENTORY

1 14X24 plywood shack
8 drums - full
2 drums- empty
1 drum of garbage
2 rolls cable
35 drill steel rods
assorted pipe
1 metal stove (heating, diesel)
stove pipe
pails, small drums, pots
1 16x16 chopper pad with heavy 8x8 beams
1 16x14 drill pad

DESCRIPTION

August 13

Moved crew by helicopter from Churchill Creek campsite to cleanup site.

Moved full drums by sling three at a time and two sling loads of junk. Cut and rolled cable and cut pipe and hoses into slingable lengths. Cut up and piled chopper pad and drill pad to be burnt.

Burned all wood debris (total volume of wood waste- 1800 board feet).

All debris removed to staging site to be trucked to Toad River dump site.

Returned to Goat Creek #1 to repile burned remains and do final check.

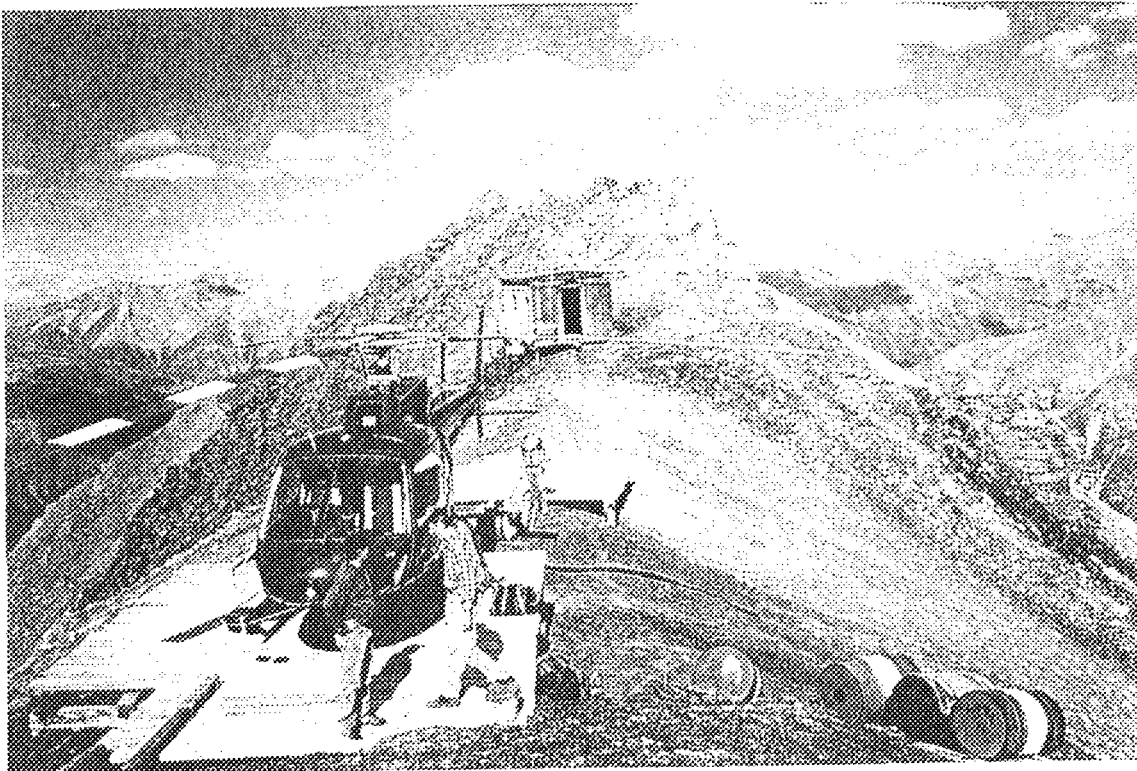


Figure 10

Site #1 Goat Creek #2

Drill site prior to cleanup

Coordinates: 58 21 58 125 12 28



Figure 11

Site #1 Goat creek #2

Building (drill camp) with dead goat inside

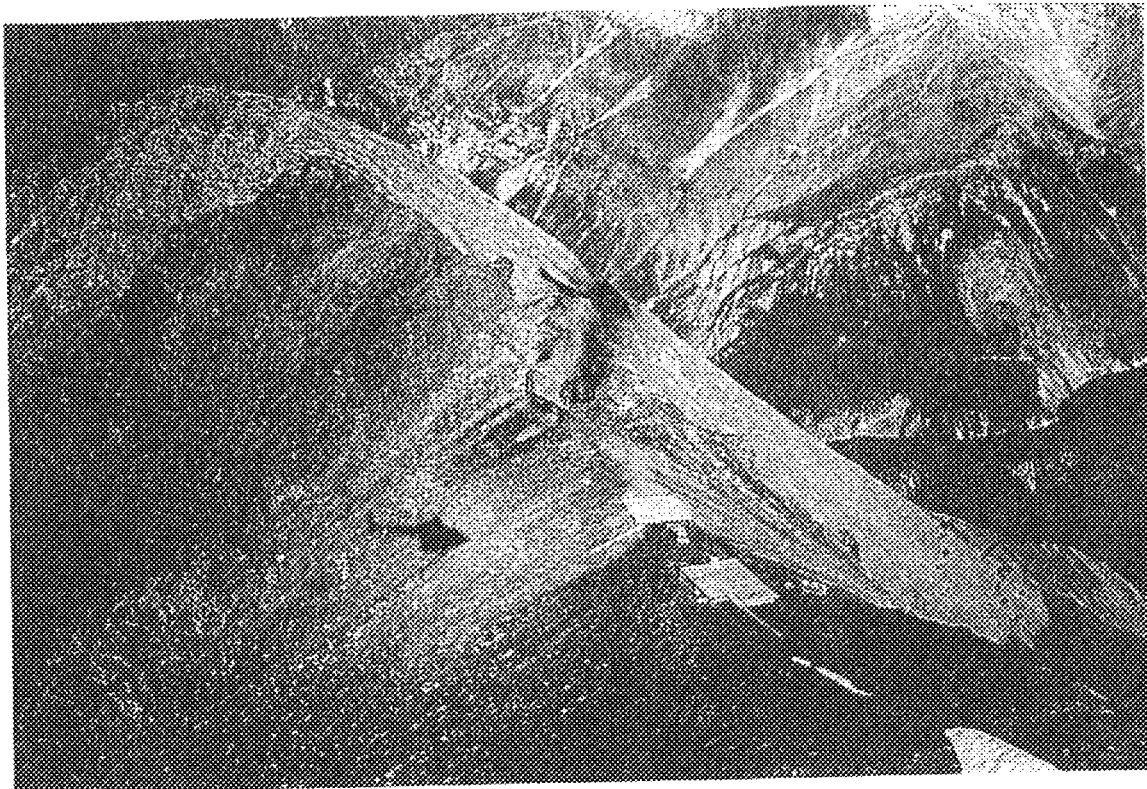


Figure 12
Site #1 Goat Creek #2
Drill camp being burned

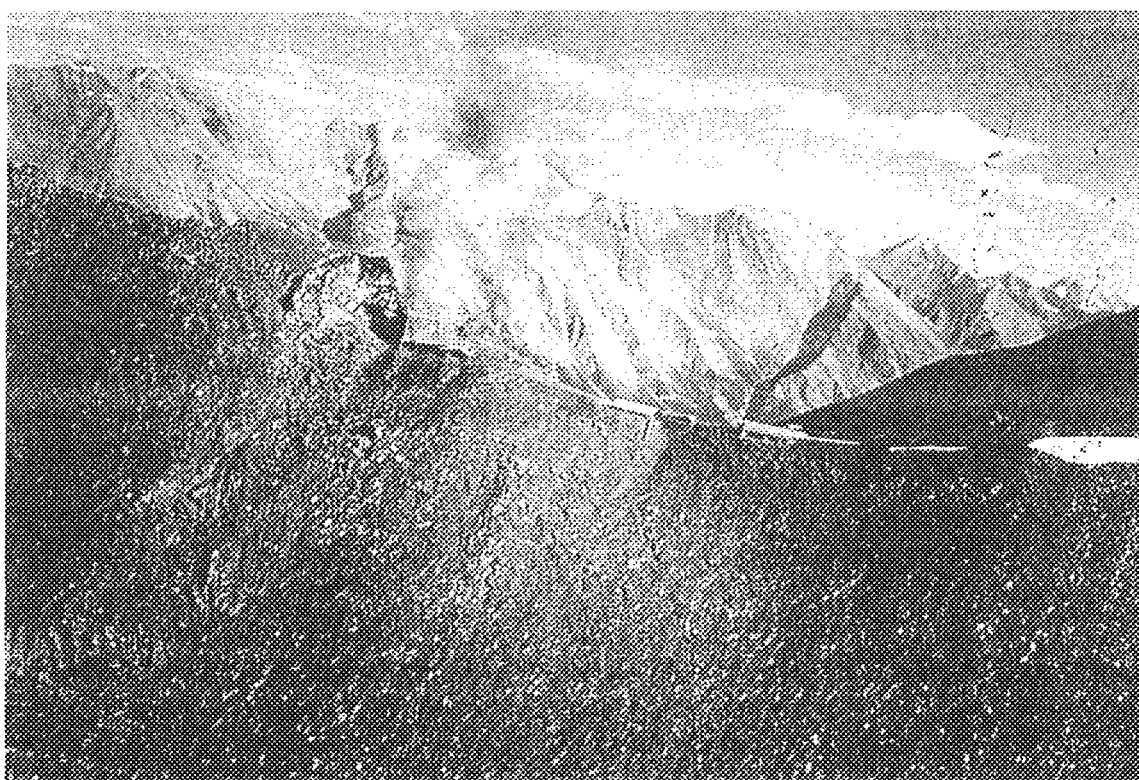


Figure 13
Site #1 Goat Creek #2
Drill camp burning



Figure 14
 Site #1 Goat Creek #2
 Drill pad cut up and ready to burn

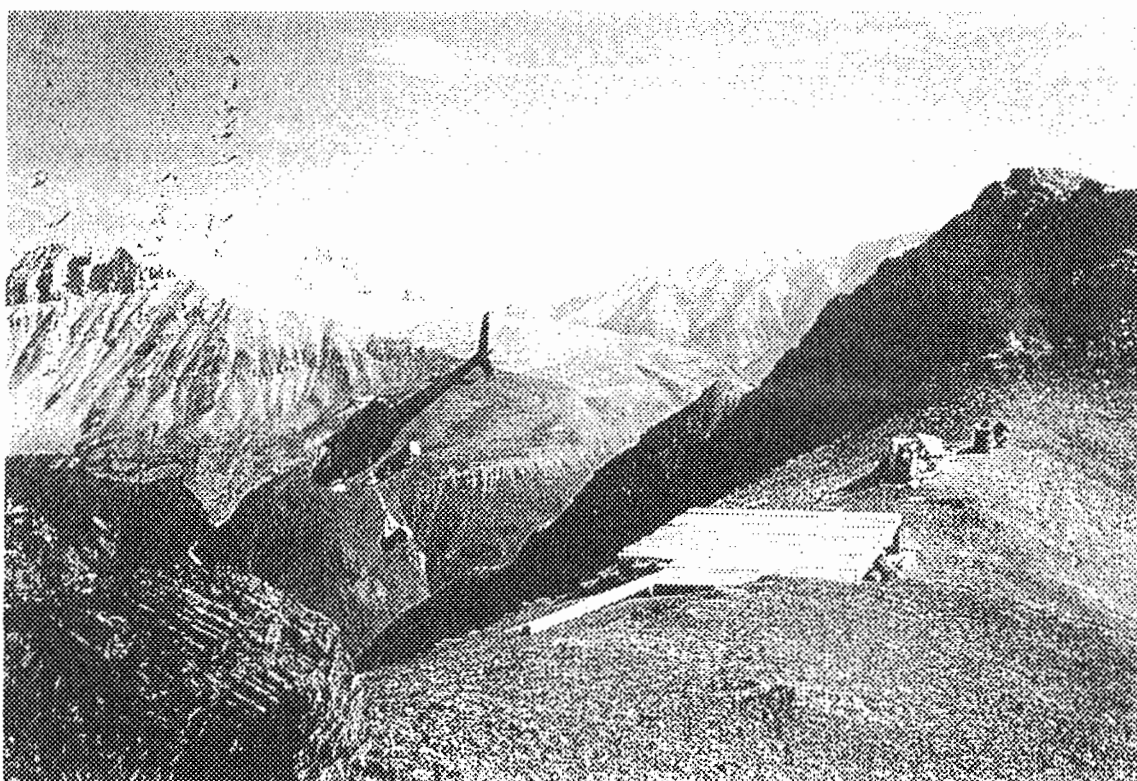


Figure 15
 Site #1 Goat Creek #2
 Slings full barrels



Figure 16

Site #1 Goat Creek #2

Helicopter pad and drill pad cut up and ready to burn



Figure 17

Site #1 Goat Creek #2

Totally restored site looking north

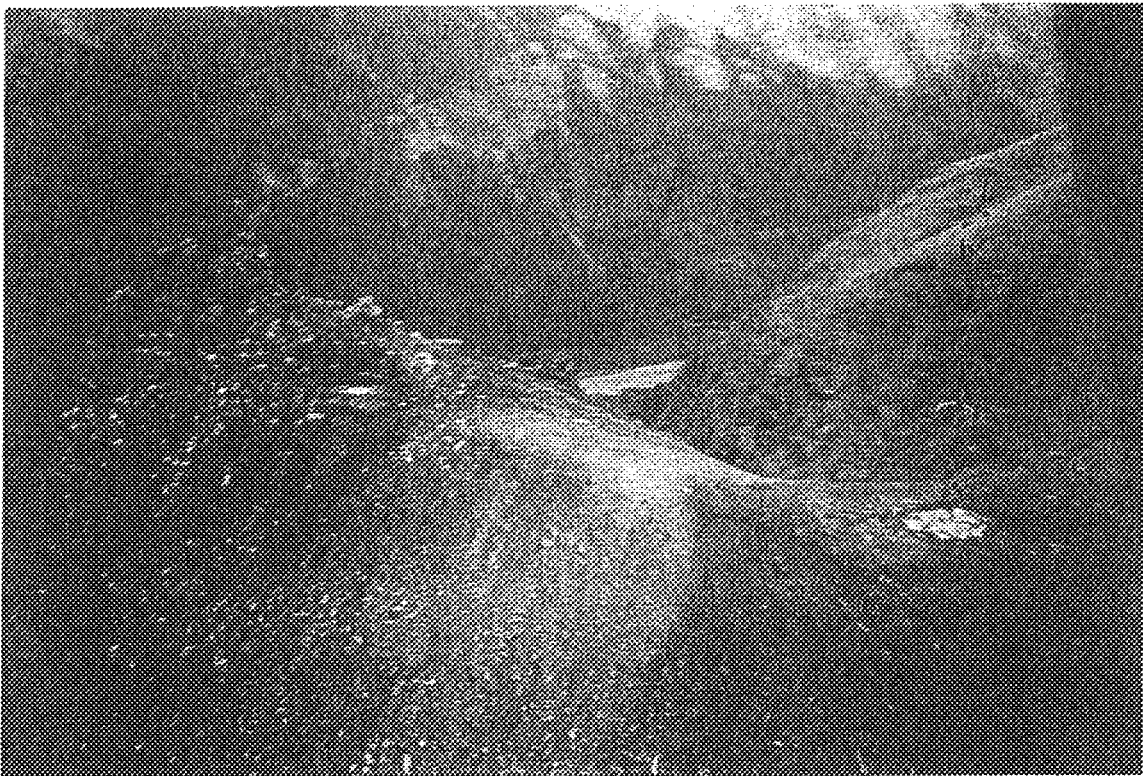


Figure 18
 Site #1 Goat Creek #2
 Totally restored site looking south

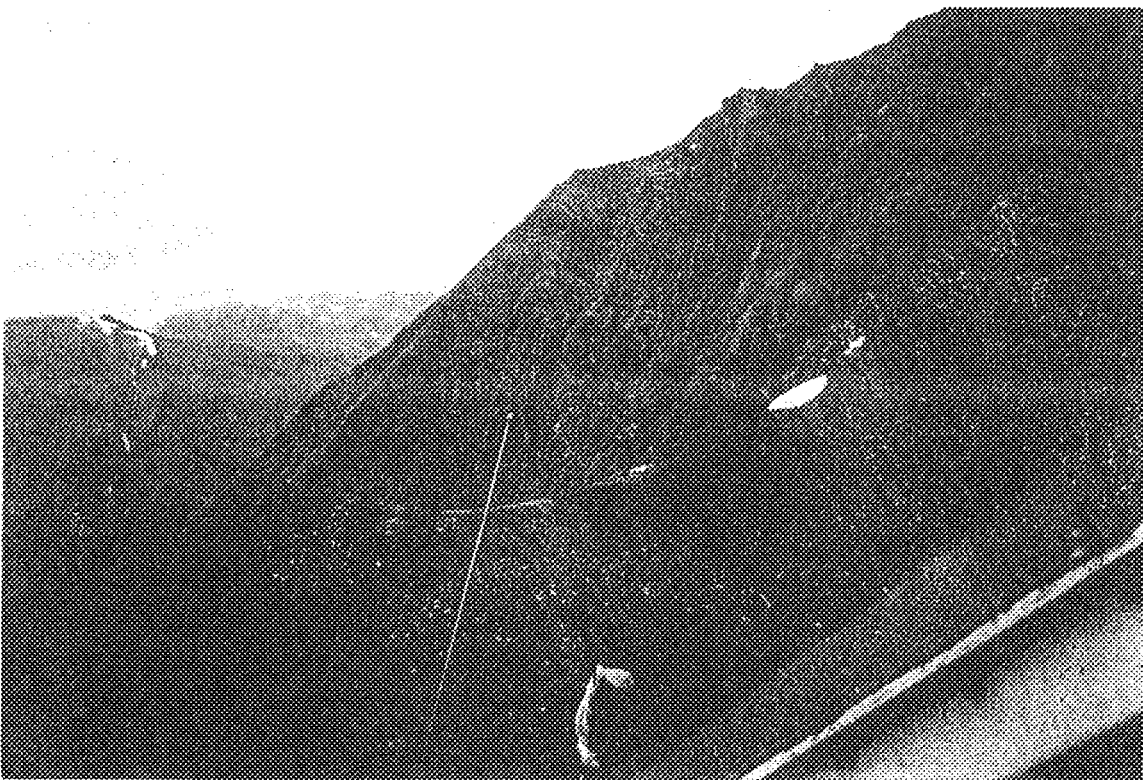


Figure 19
 Site #1 Goat Creek #2
 Totally restored site looking southwest

MUSKWA KECHIKA CLEANUP

CONTRACT #1 SITE #1 GOAT CREEK #3

COORDINATES 58 23 48 125 08 34

INVENTORY

19 joints pipe
800 # steel cofferdam material
600# assorted steel rods, pails, old pump, rebar and garbage
2 drums- empty

DESCRIPTION

August 13

Flew crew to site from Goat Creek #2. Discovered 19 joints of pipe in thick second growth poplar. This entire area was slashed to access pipe. Pipe was then cut with cutsaw into slingable lengths. All other garbage was gathered and bagged to be removed to staging area. Cofferdam material was slung to staging site. A tank stand or barrel stand was cut up and laid flat to rot. Crew was removed by helicopter to camp site.

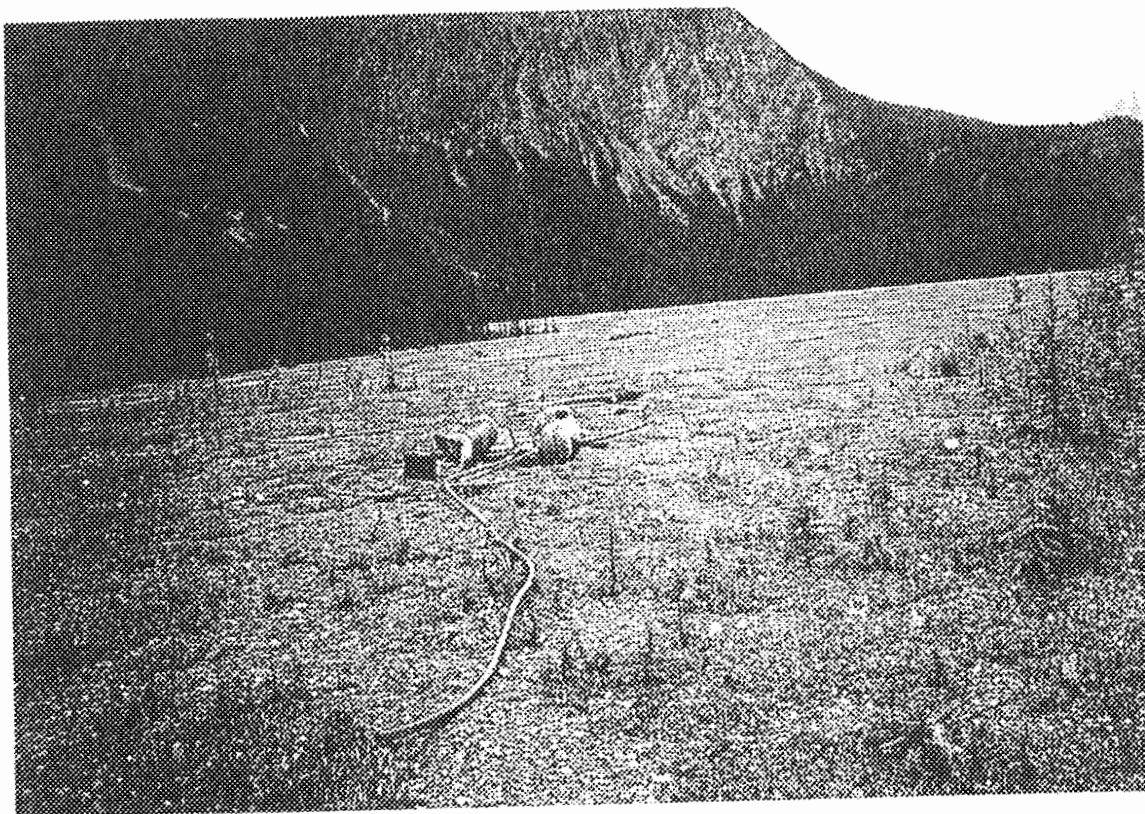


Figure 20

Site #1 Goat Creek #3

Coordinates: 58 23 48 125 08 34

Assorted junk prior to cleanup

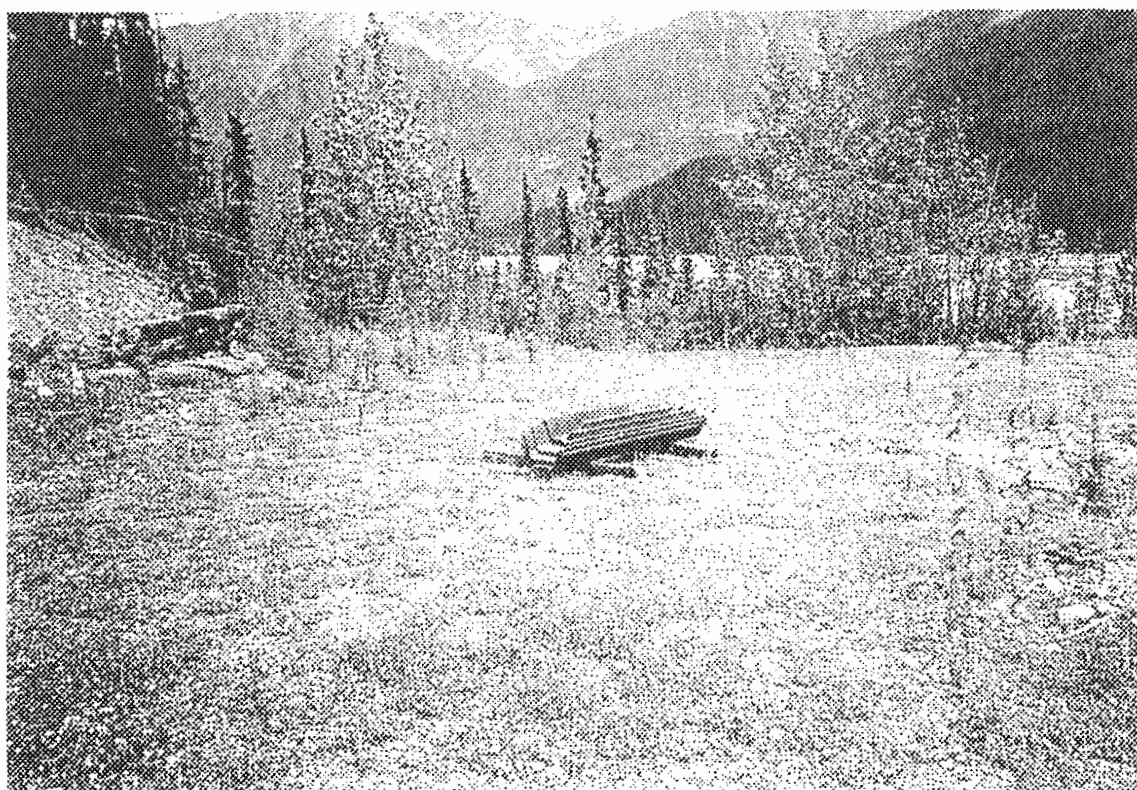


Figure 21

Site #1 Goat Creek #3

Cofferdam material ready to sling



Figure 22
 Site #1 Goat Creek #3
 19 joints of pipe prior to slashing area and staging to sling



Figure 23
 Site #1 Goat Creek #3
 Pipe after cutting and staging to sling

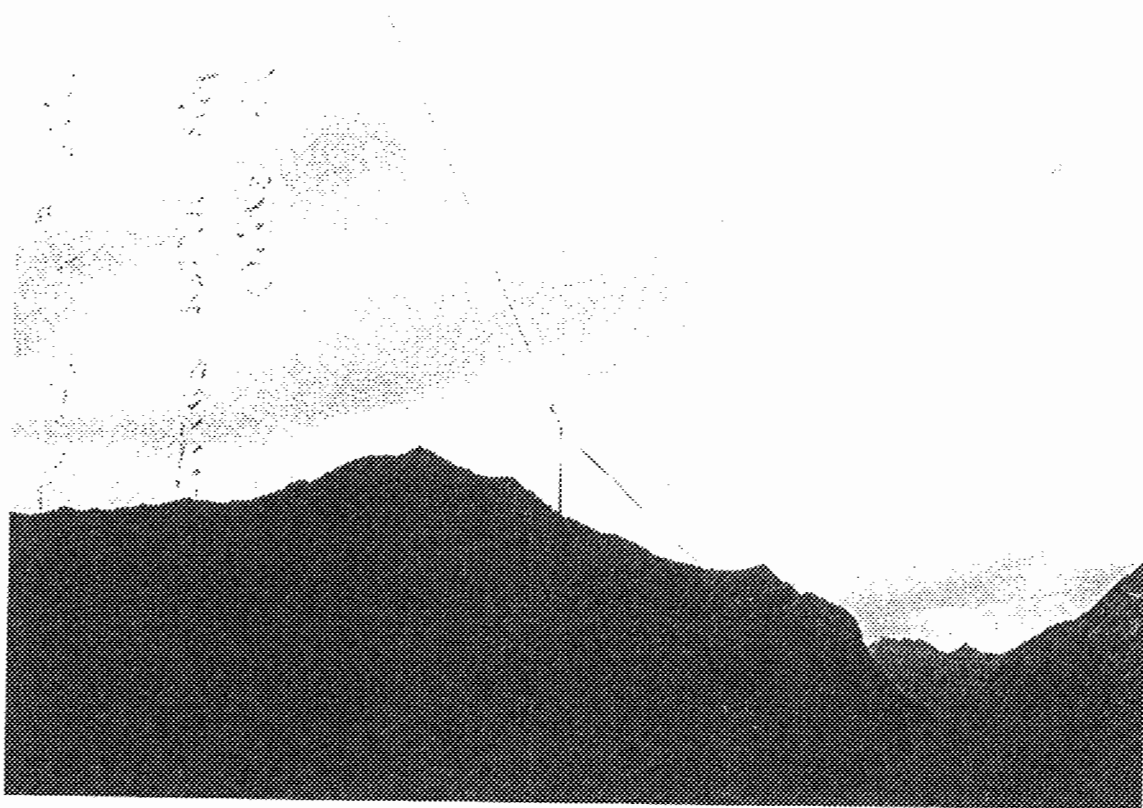


Figure 24

Site #1

Goat Creek #3

Long lining pipe

MUSKWA KECHIKA CLEANUP

CONTRACT #1 SITE #2 TROPHY VALLEY

Unable to locate. May have been cleaned up by hunters last Fall

MUSKWA KECHIKA CLEANUP

CONTRACT #1 SITE #3 CHURCHILL AIRSTRIP

COORDINATES 58 31 22 125 06 26

INVENTORY

1 burned aircraft frame and associated parts
1 drum
3 large bags garbage

DESCRIPTION

August 14

Flew crew into strip from camp site. Rigged plane to be slung and removed to staging site. All garbage was collected from hunters' campsites in the area.

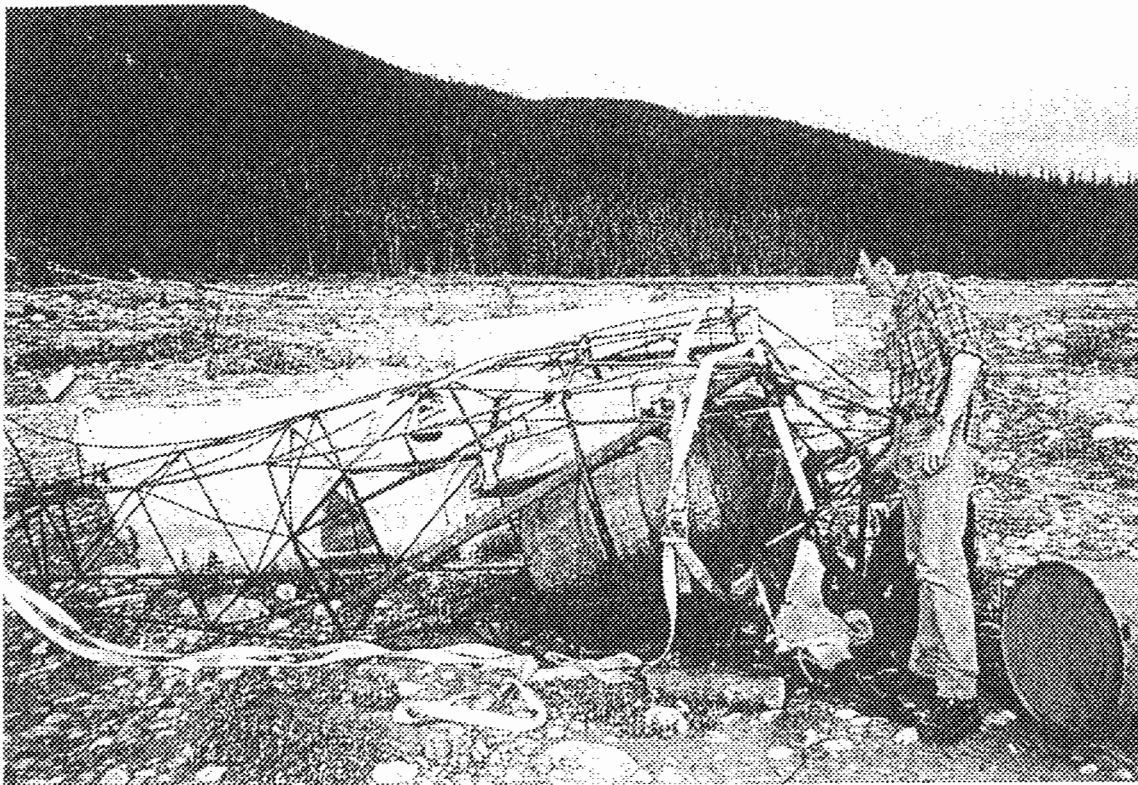


Figure 25

Site #3 Churchill Airstrip Coordinates: 58 31 22 125 06 26
Burned plane, barrels and bag of garbage

MUSKWA KECHIKA CLEANUP

CONTRACT #1 SITE #4 MINING CAMP

COORDINATES 58 32 01 125 05 40

INVENTORY

1 commercial size cookslove and grills
2 drums
2 bed frames
11 bags cans, bottles and assorted junk

August 14

Moved first crew to Churchill Airstrip site to rig plane frame. Remaining crew moved to site #4, which was scattered with debris. Entire area was cleaned of cans, etc. and gathered in bags and slung to staging site.



Figure 26

Site #4 Old Mining Camp

Coordinates: 58 32 01 125 05 40

Site prior to cleanup



Figure 27

Site #4 Mining camp

Site prior to cleanup



Figure 28
 Site #4 Mining camp
 Sling load of assorted junk



Figure 29
 Site #4 Mining camp
 Slinging to staging area at Wokpash Creek

MUSKWA KECHIKA CLEANUP

CONTRACT #1 SITE #5 RACING RIVER CHANNEL

COORDINATES START 54 23 47 125 08 25

FINISH 58 43 53 125 08 10

INVENTORY

20 drums
7 equipment tires
2 culverts
10 pails
large quantity assorted cans and general garbage
2 tarps

August 14

Flew the Racing river channel and removed all garbage that could be located. One stretch of river near the Churchill Mill property was not cleaned due to the volume of debris. This site will need to undergo a major cleanup as the Racing River and Delano Creek are both eroding into old buried dump sites and washing junk into the river. *This should be addressed.*

A large percentage of this cleanup required digging into silt or cutting to remove, requiring considerable labour.

Bad weather at 4 pm stopped work. Crew and camp was removed to Toad River.

Two pickup loads were hauled to Toad River dump site.

August 19

Returned to site and completed cleanup. Drums and tires were removed by sling to staging site.

Note: the following was removed from coordinates listed

3 drums	58 23 47 125 08 25
1 drum	58 25 11 125 07 15
1 drum	58 25 39 125 07 19
1 drum	58 25 58 125 07 15
1 drum	58 26 08 125 07 25
1 drum and junk	58 30 36 125 08 17
1 drum	58 30 51 125 07 52
2 tires and 1 drum	58 31 04 125 07 26
3 drums	58 31 46 125 05 38
3 drums and 2 tires	58 31 12 125 06 55
1 drum and 1 tire	58 31 22 125 07 07
3 drums and 1 tire	58 23 33 125 05 16
1 tire and tarp	58 43 53 125 08 10



Figure 30

Site #5 Racing River channel Coordinates: Start 58 23 47 125 08 25
Finish 58 43 53 125 08 10



Figure 31

Site #5 Racing River channel



Figure 32
Site #5 Racing River channel



Figure 33
Site #5 Racing River channel



Figure 34
Site #5 Racing River channel

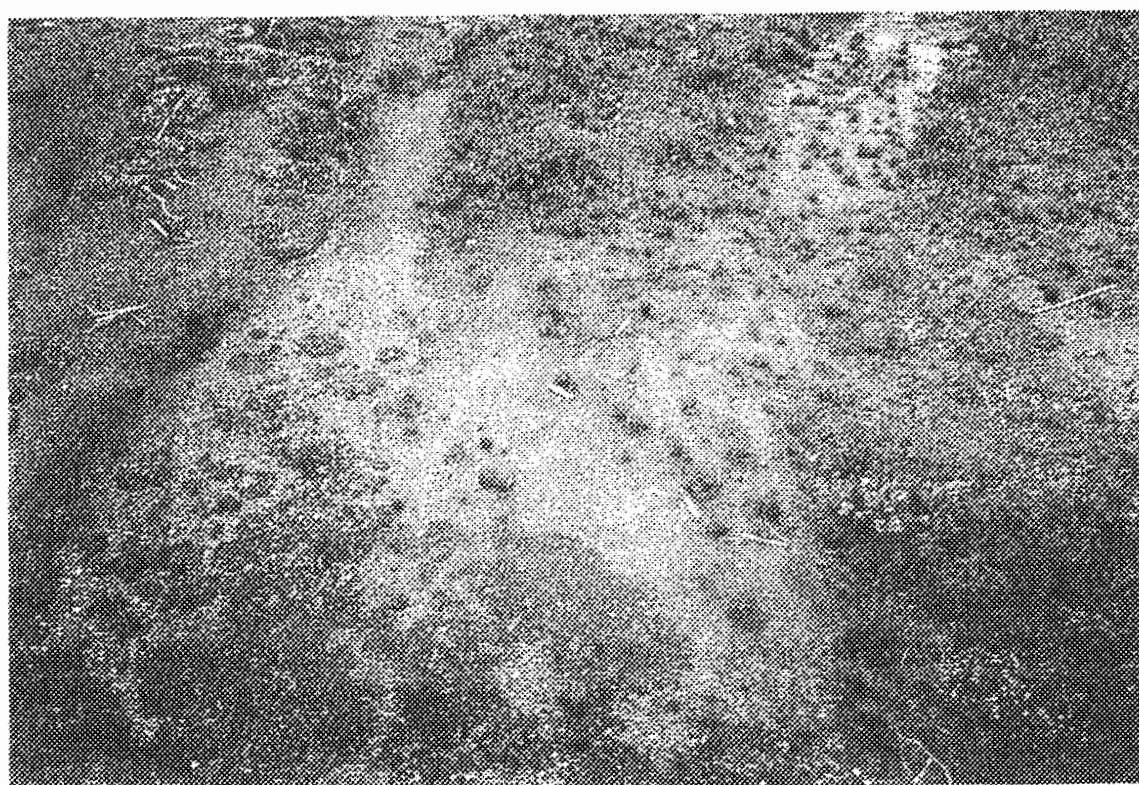


Figure 35
Site #5 Racing River channel

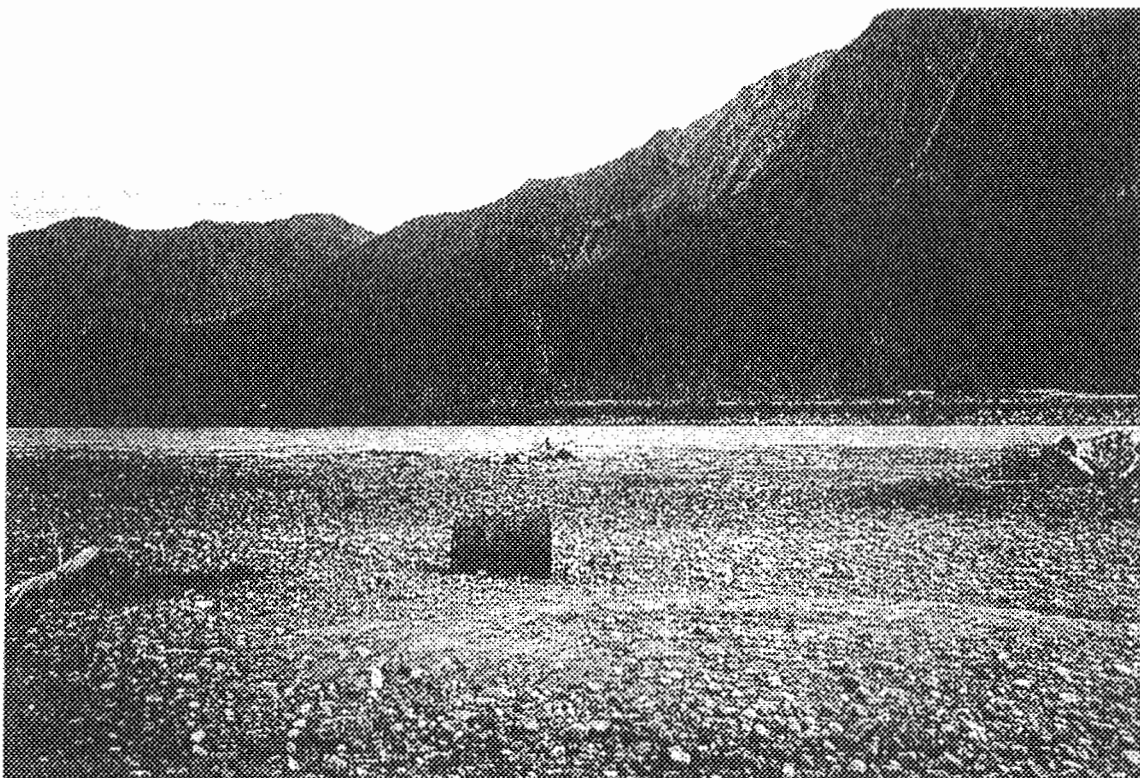


Figure 36
Site #5 Racing River channel

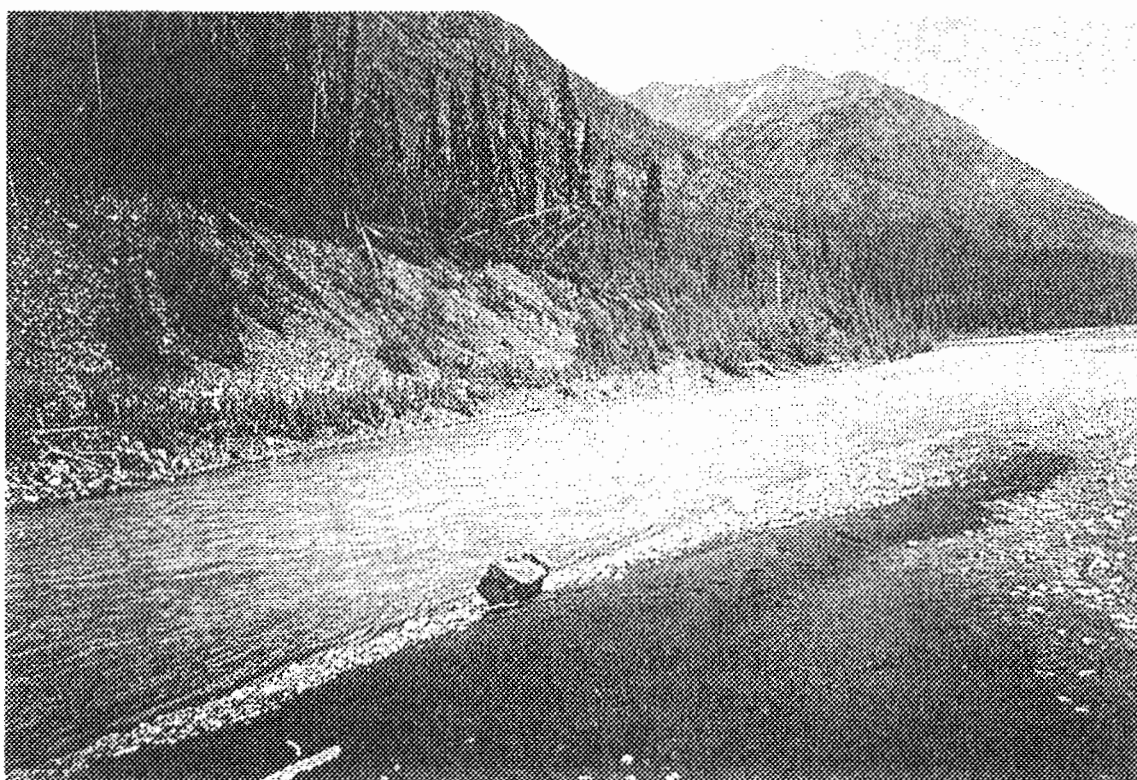


Figure 37
Site #5 Racing River channel



Figure 38
Site #5 Racing River channel



Figure 39
Site #5 Racing River channel

Figure 40
Site #5 Racing River channel

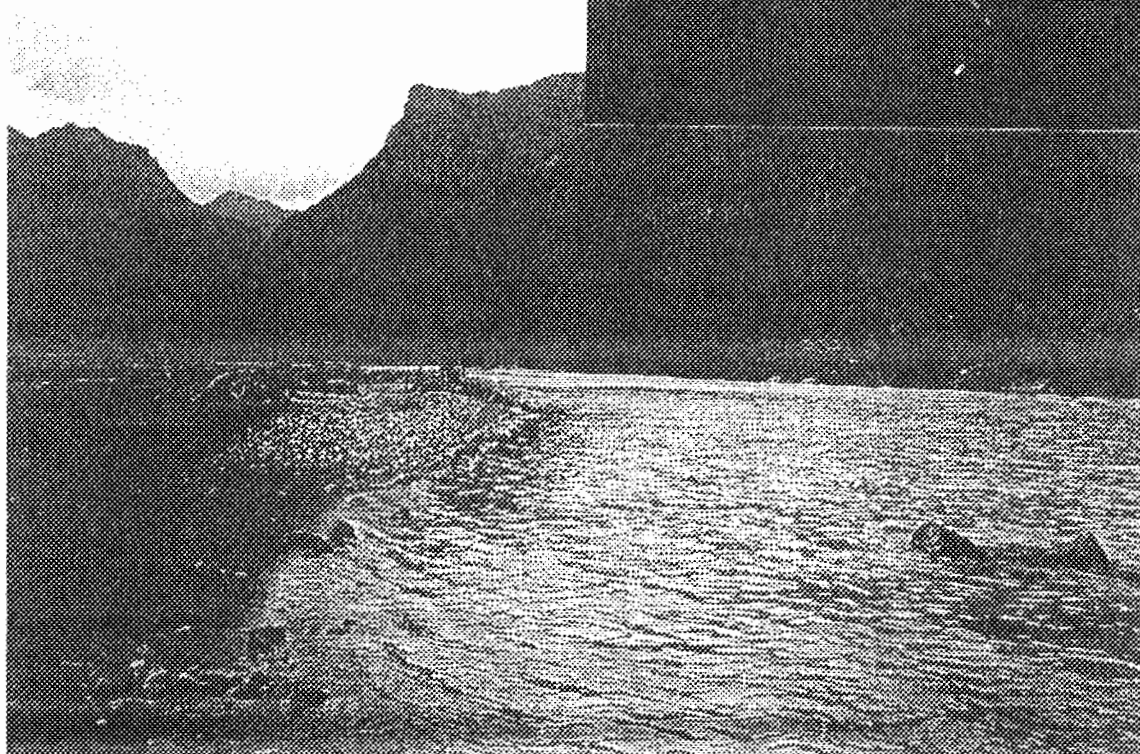
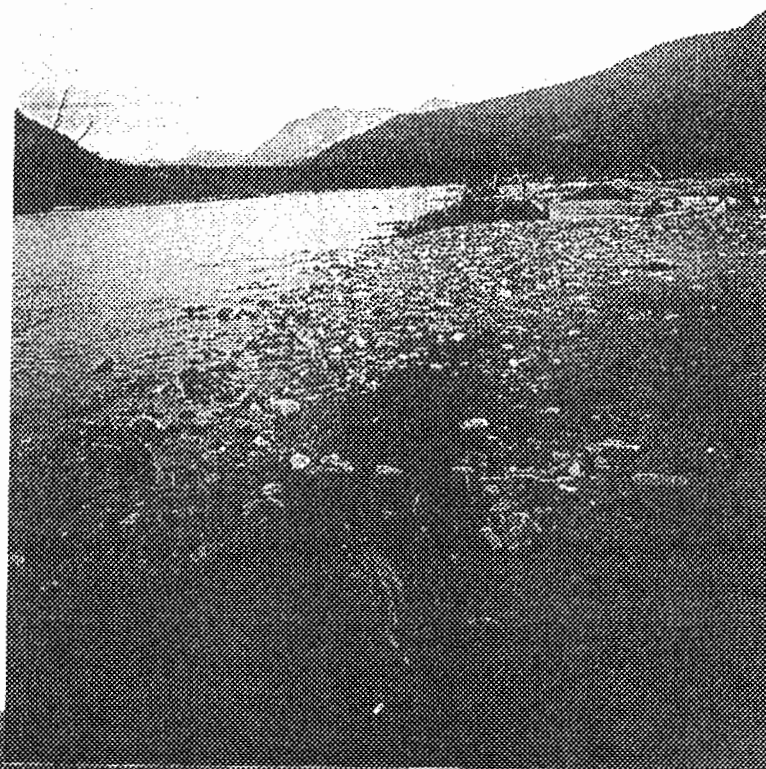


Figure 41
Site #5 Racing River channel

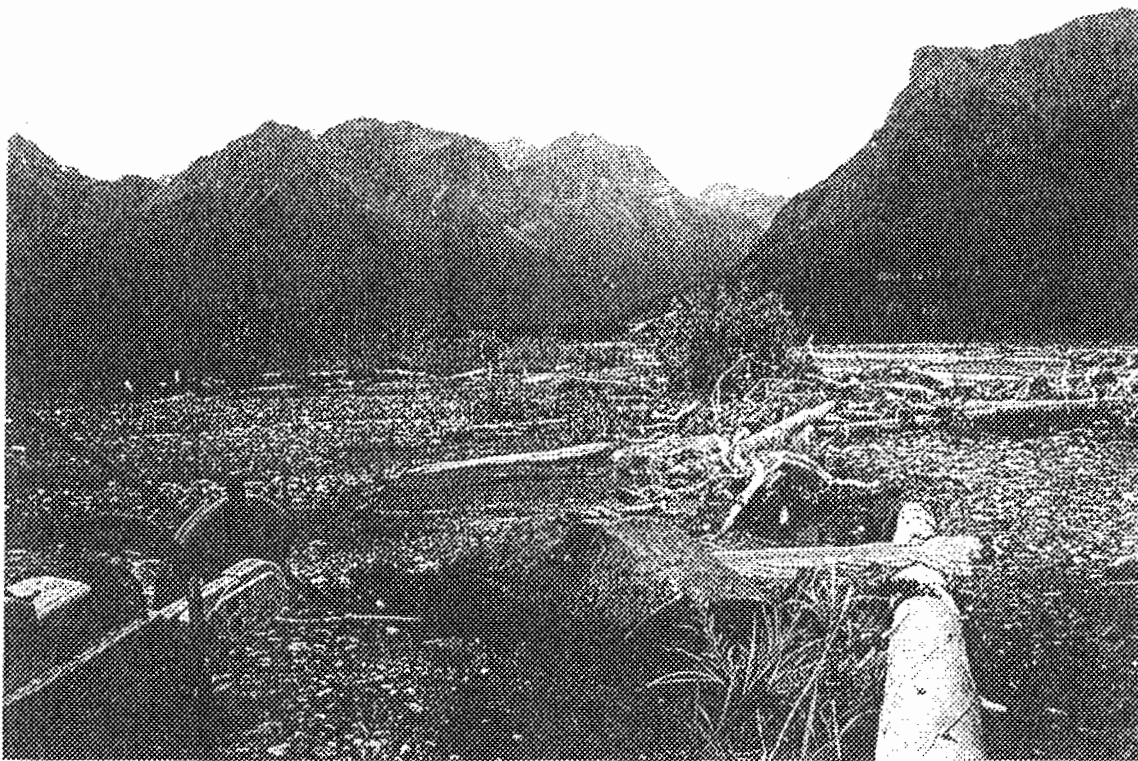


Figure 42
Site #5 Racing River channel



Figure 43
Site #5 Racing River channel



Figure 44
Site #5 Racing River channel

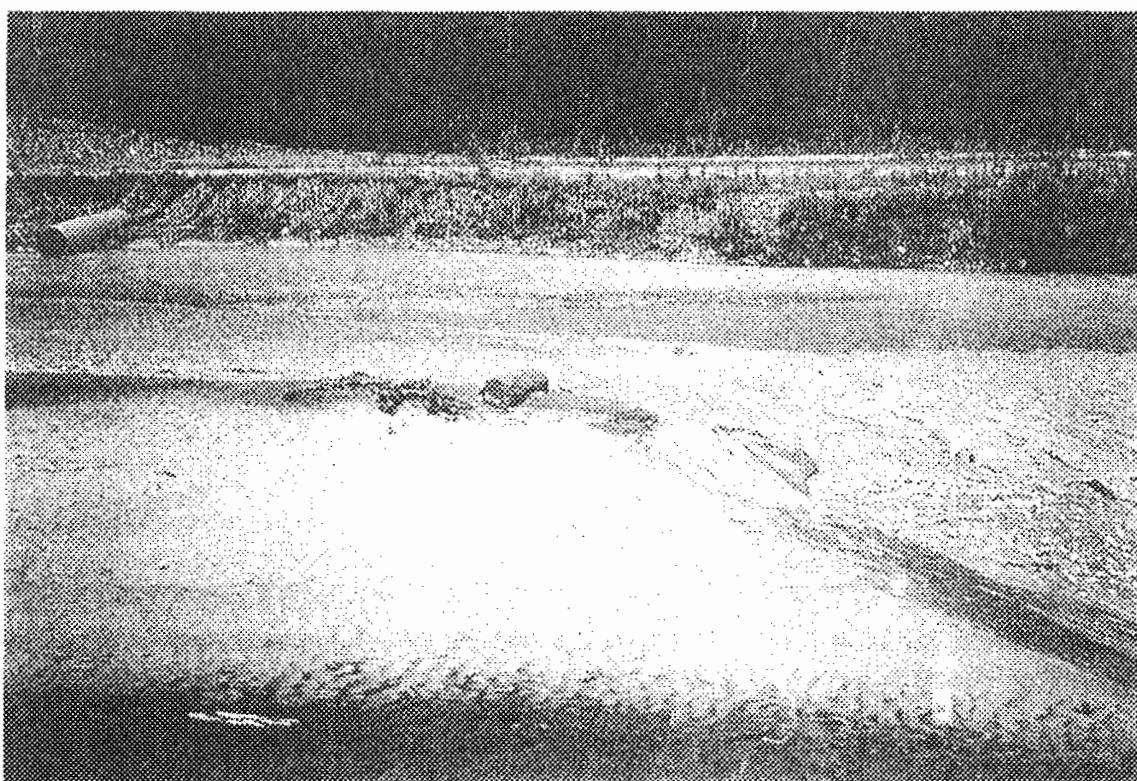


Figure 45
Site #5 Racing River channel

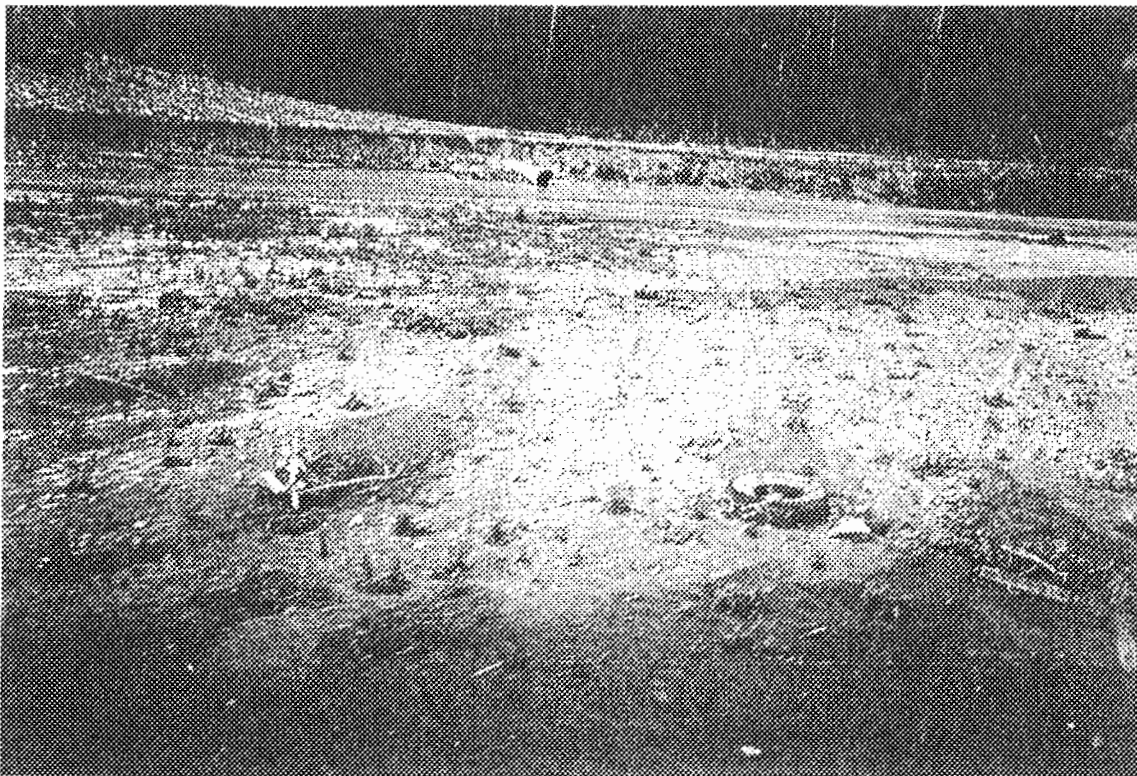


Figure 46
Site #5 Racing River channel



Figure 47
Site #5 Racing River channel



Figure 48
Site #5 Racing River channel



Figure 49
Site #5 Racing River channel

Figure 50
Site #5 Racing River channel

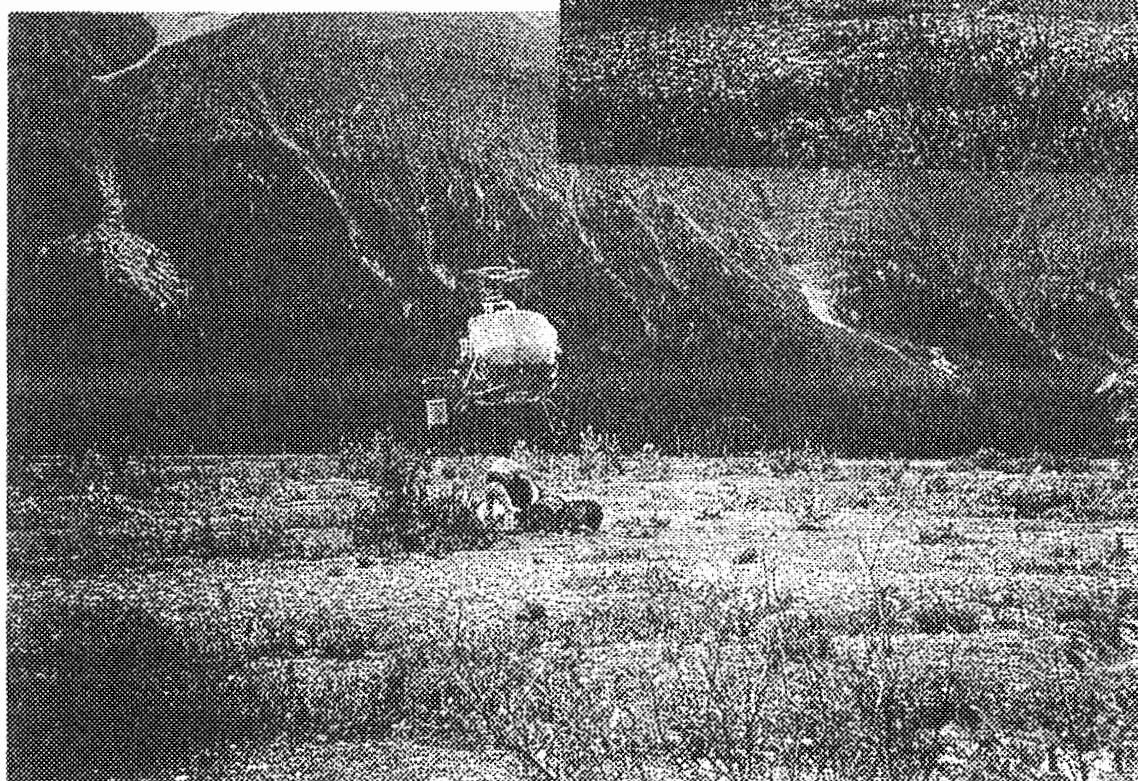
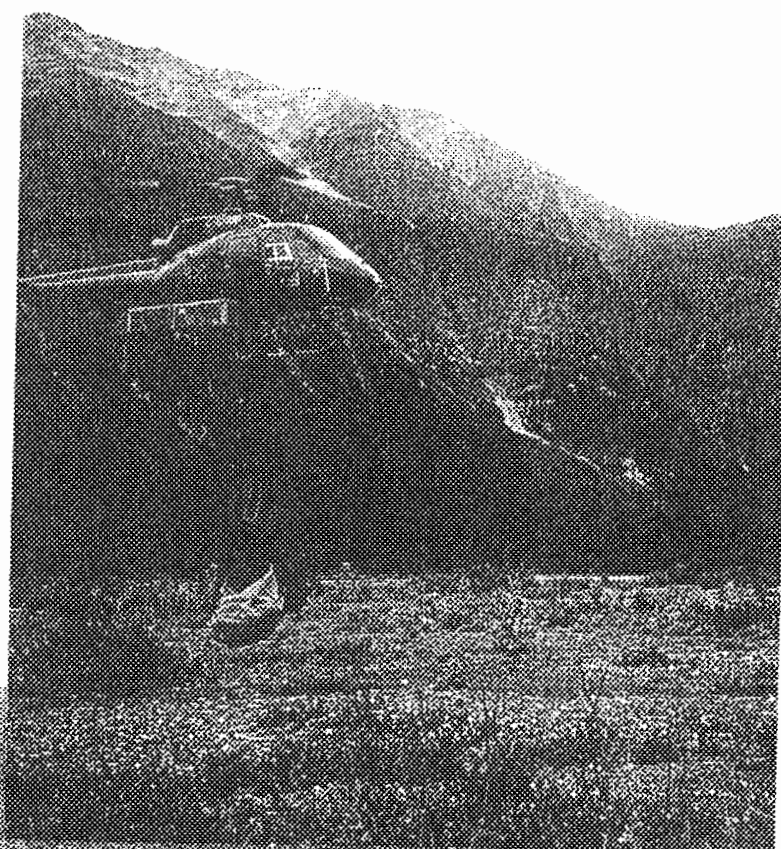


Figure 51
Site #5 Racing River channel

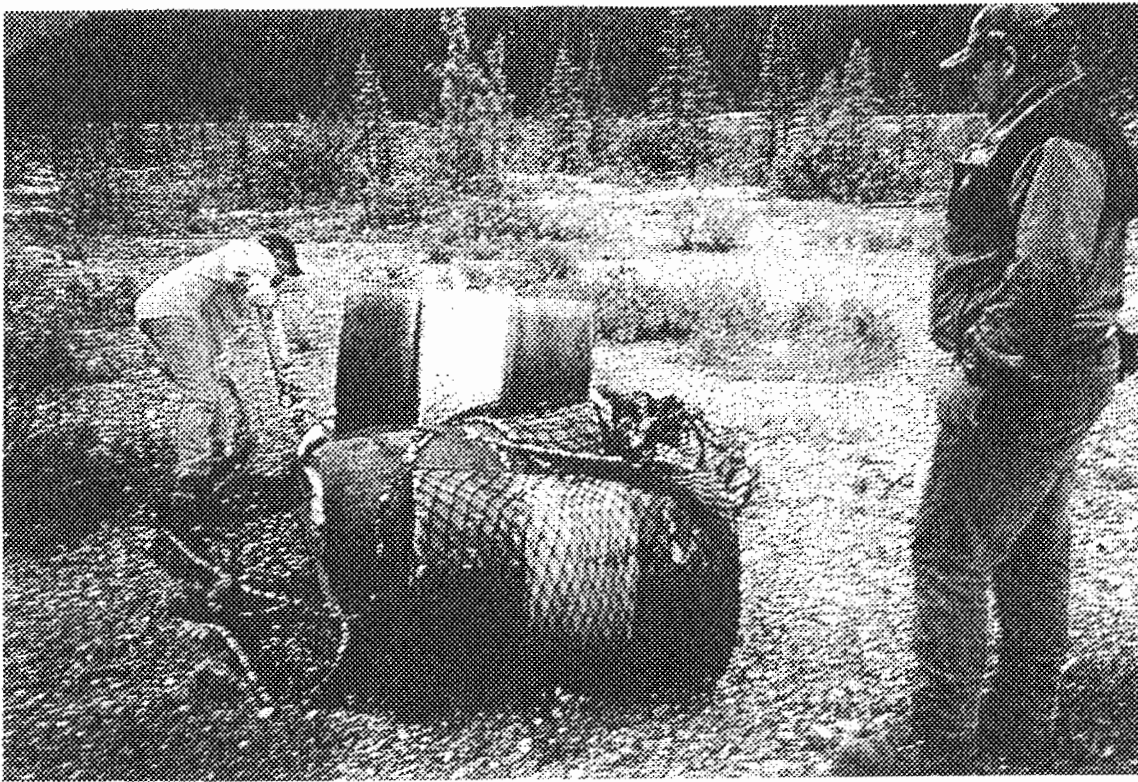


Figure 52
Site #5 Racing River channel



Figure 53
Site #5 Racing River channel



Figure 54
Site #5 Racing River channel

MUSKWA KECHIKA CLEANUP

CONTRACT #2 SITE #6 FORT RELIANCE DRILL SITE

COORDINATES 58 32 58 125 43 28

INVENTORY

21 large drums

10 small drums

5 drums garbage - cans, stovepipe, pails

3 drill steel

August 15

Attempted to drop crew at site, but was unable, due to heavy brush. Crew dropped 1 mile away and walked in to site. Underbrush was cut away to enable helicopter to pick up loads. Three sling loads of material removed to Alaska Highway staging site. Second crew was left at Belcher Creek mine site to start cleanup. Two loads were hauled to Toad River dump site.

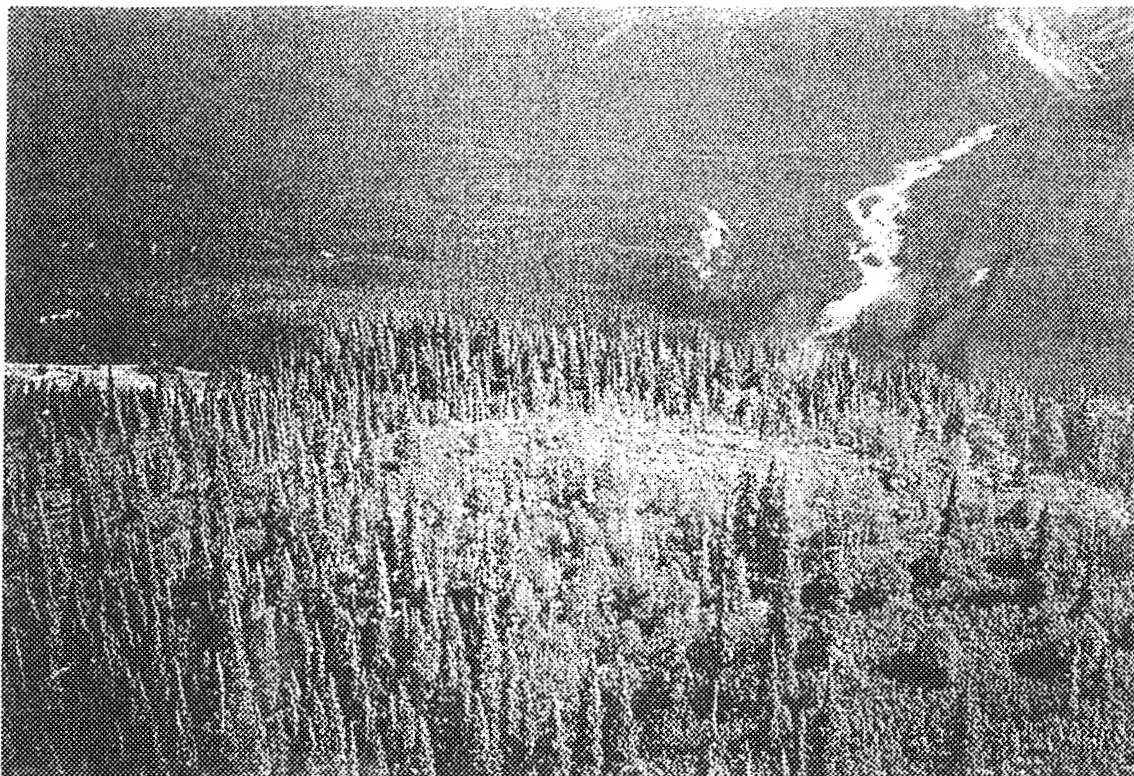


Figure 55

Site #6 Fort Reliance camp

Coordinates: 58 32 58 125 43 28

Drill site prior to cleanup



Figure 56

Site #6 Fort Reliance camp

Sling load #1 of barrels

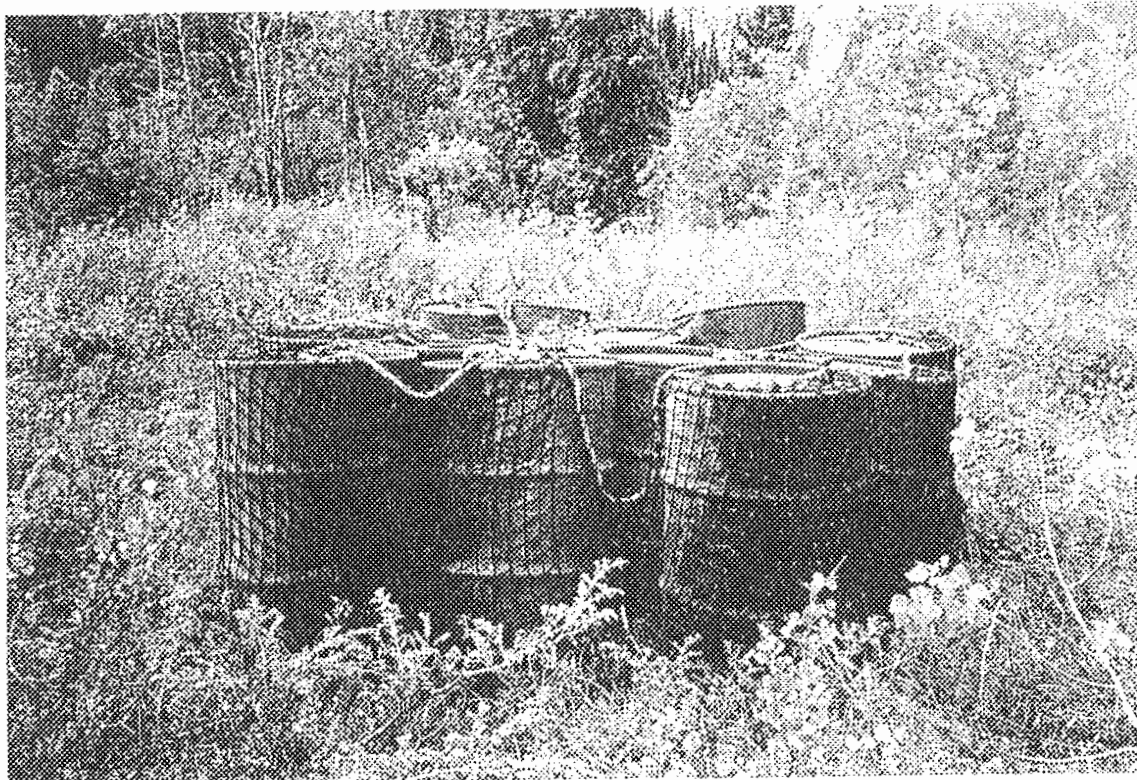


Figure 57
 Site #6 Fort Reliance camp
 Sling load #2 of barrels



Figure 58
 Site #6 Fort Reliance camp
 Cutting area bigger



Figure 59

Site #6 Fort Reliance camp

Slinging drums



Figure 60

Site #6 Fort Reliance Camp

Sling load

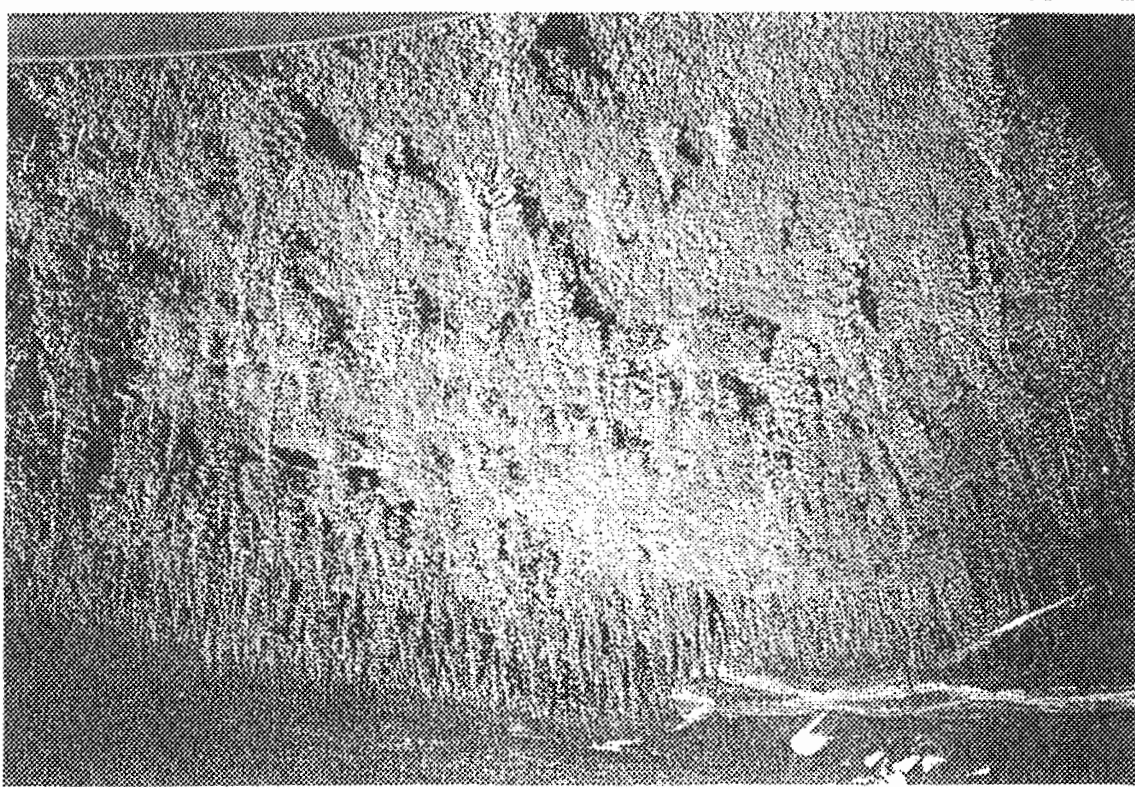


Figure 61
Site #6
Fort Reliance camp
Restored site

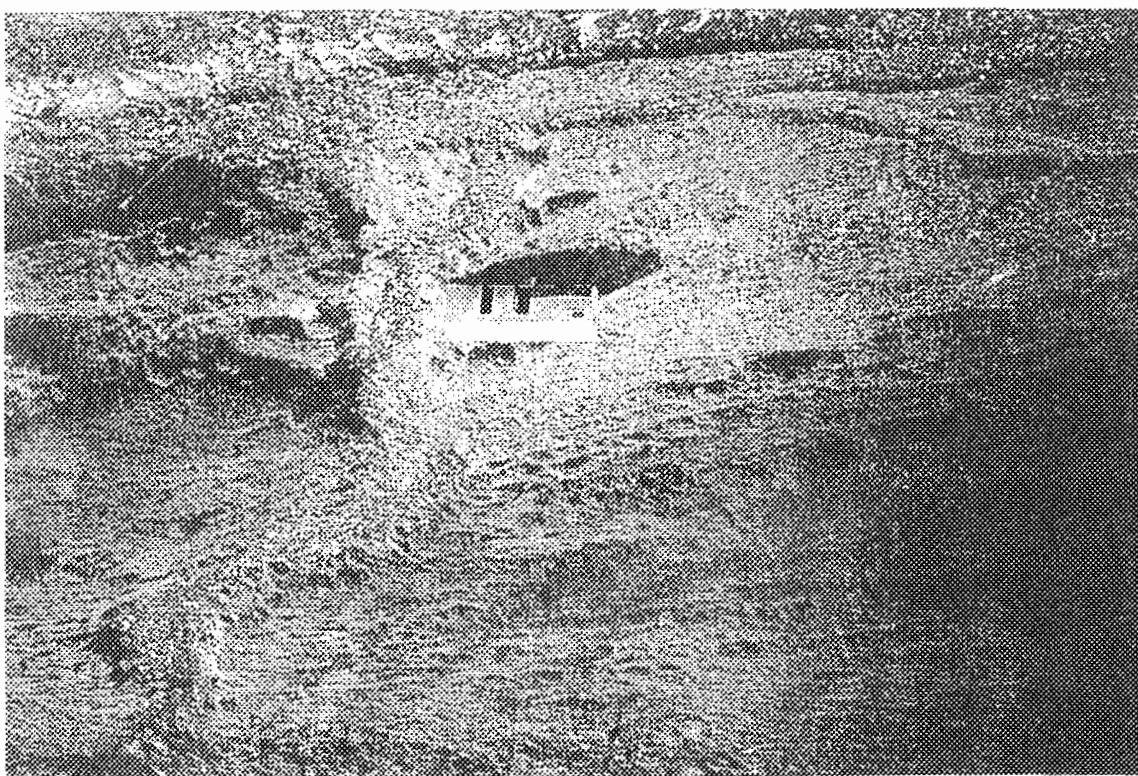


Figure 62

Belcher Creek camp

Site #7

Coordinates: 58 32 14 125 34 03

Drill shack prior to cleanup

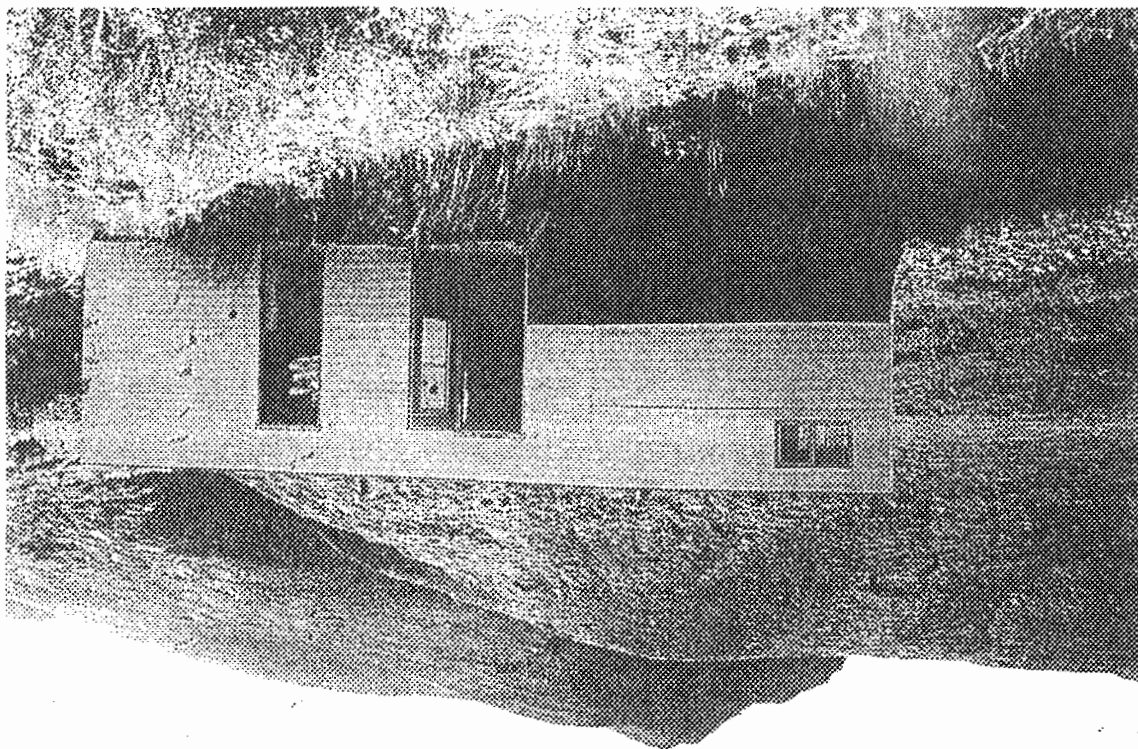


Figure 63

Belcher Creek camp

Site #7

Drill shack prior to cleanup

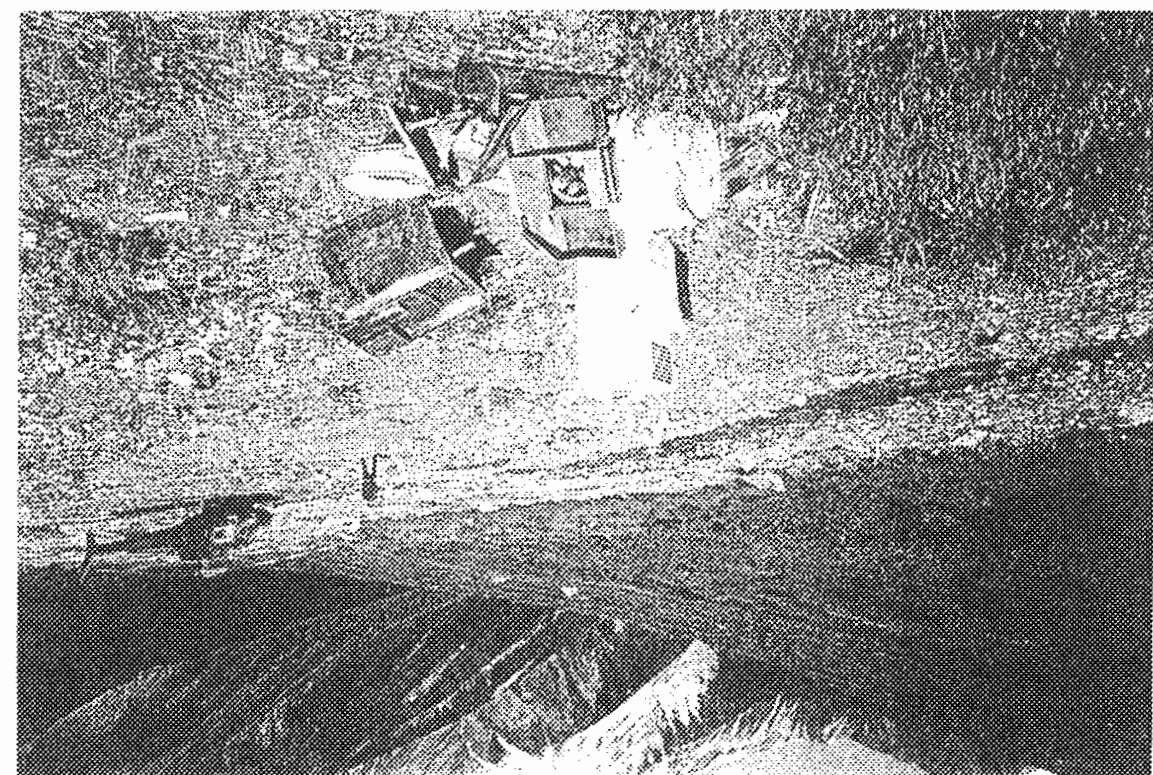


Figure 64
Site #7
Belcher Creek camp
Junk from drill shack



Figure 65
Site #7
Belcher Creek camp
Roofing, siding, fuel tank

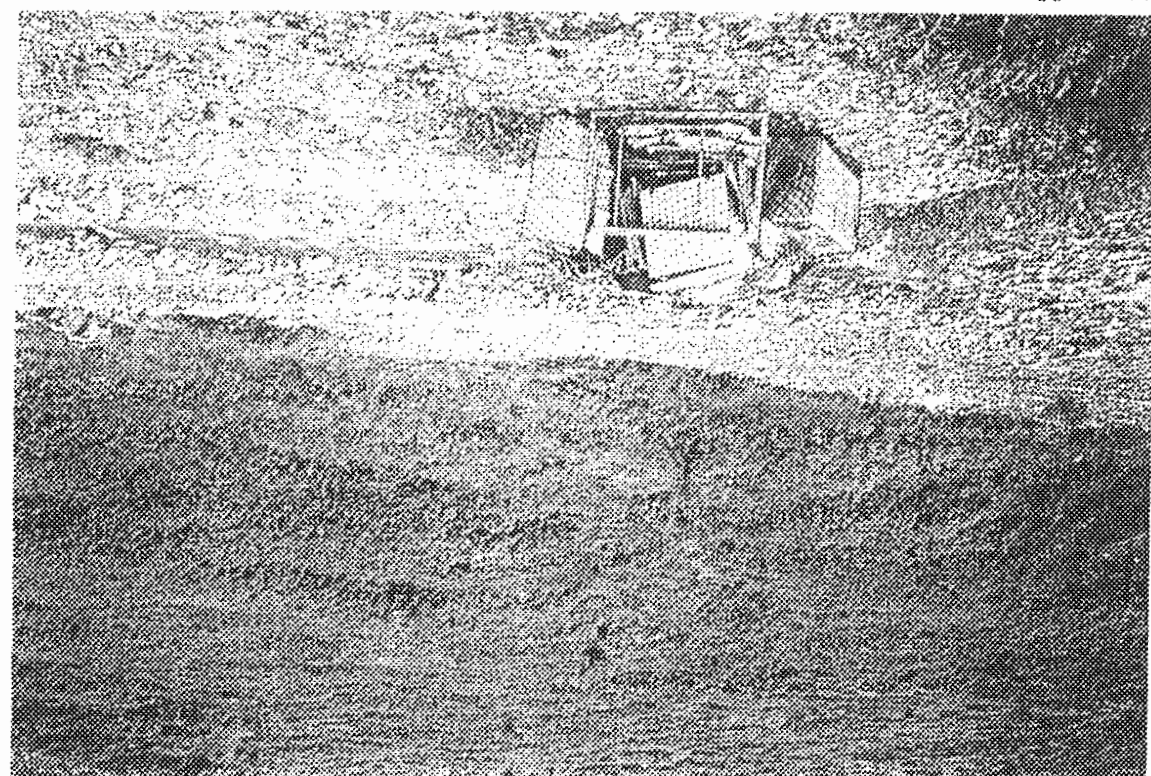


Figure 66

Site #7
Belcher Creek camp
Sling load ready to go

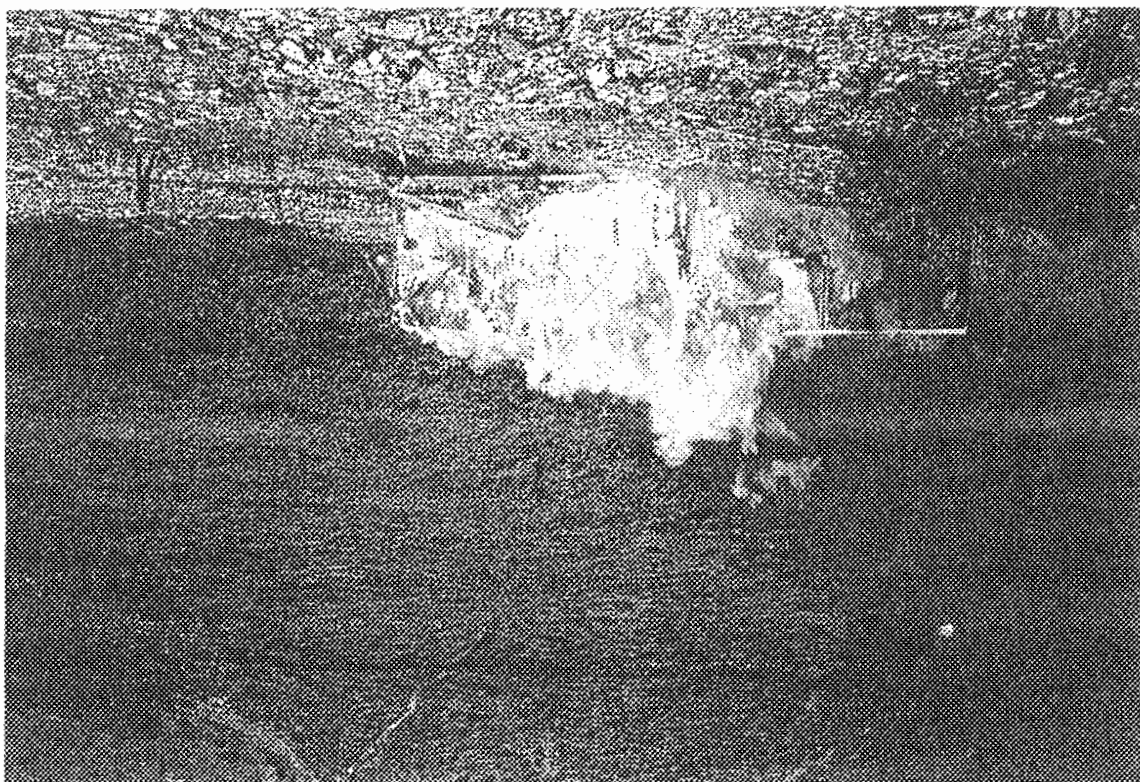


Figure 67

Site #7
Belcher Creek camp
Burning wood waste and skid shack

Figure 69
Site #7
Belcher Creek camp
Skid shack frame

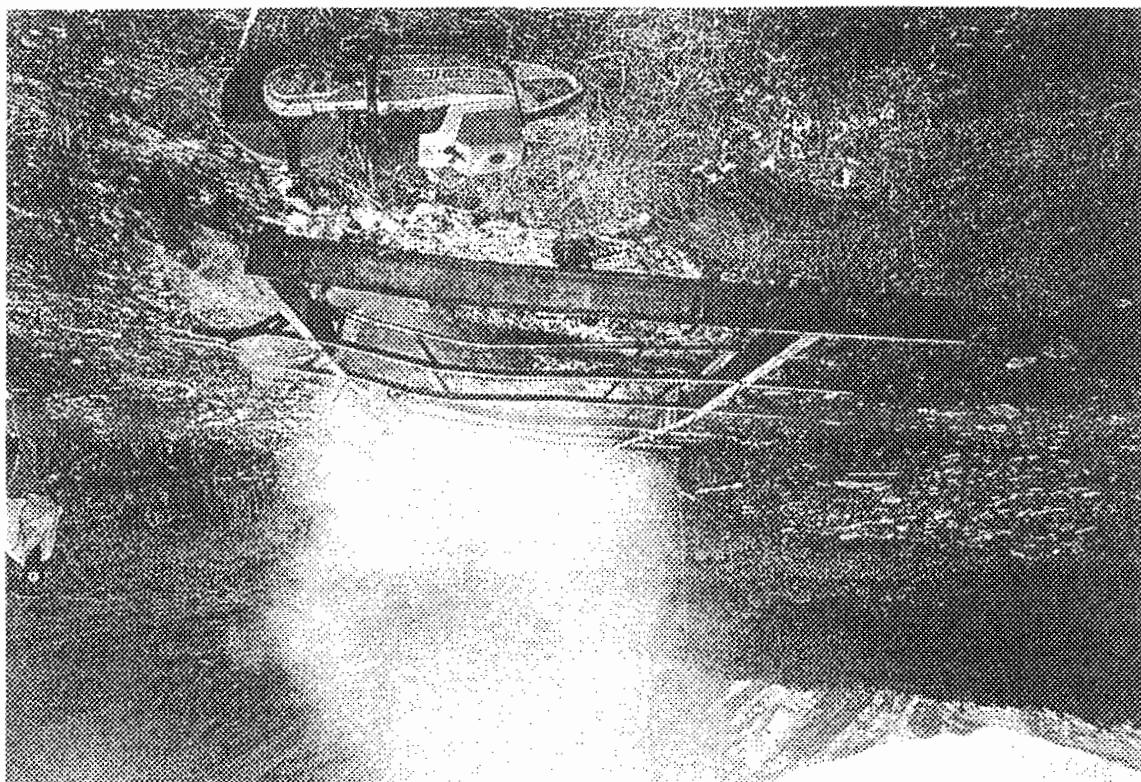
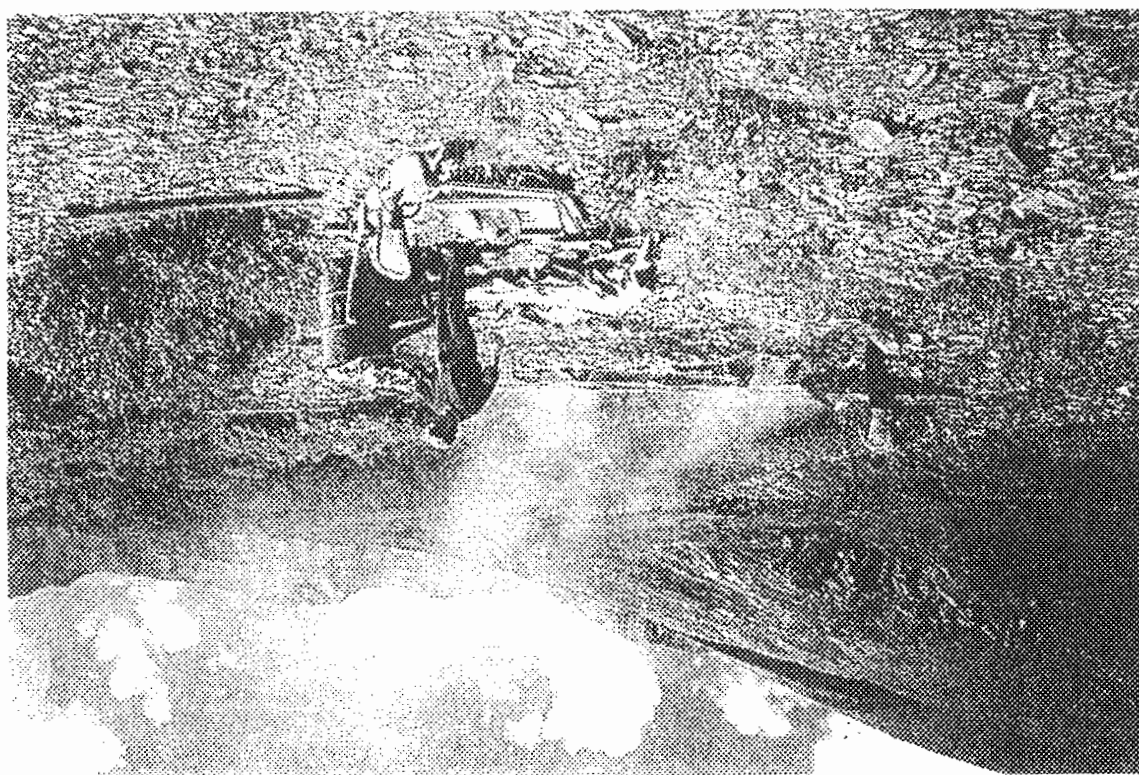


Figure 68
Site #7
Belcher Creek camp
Slinging sling load #2



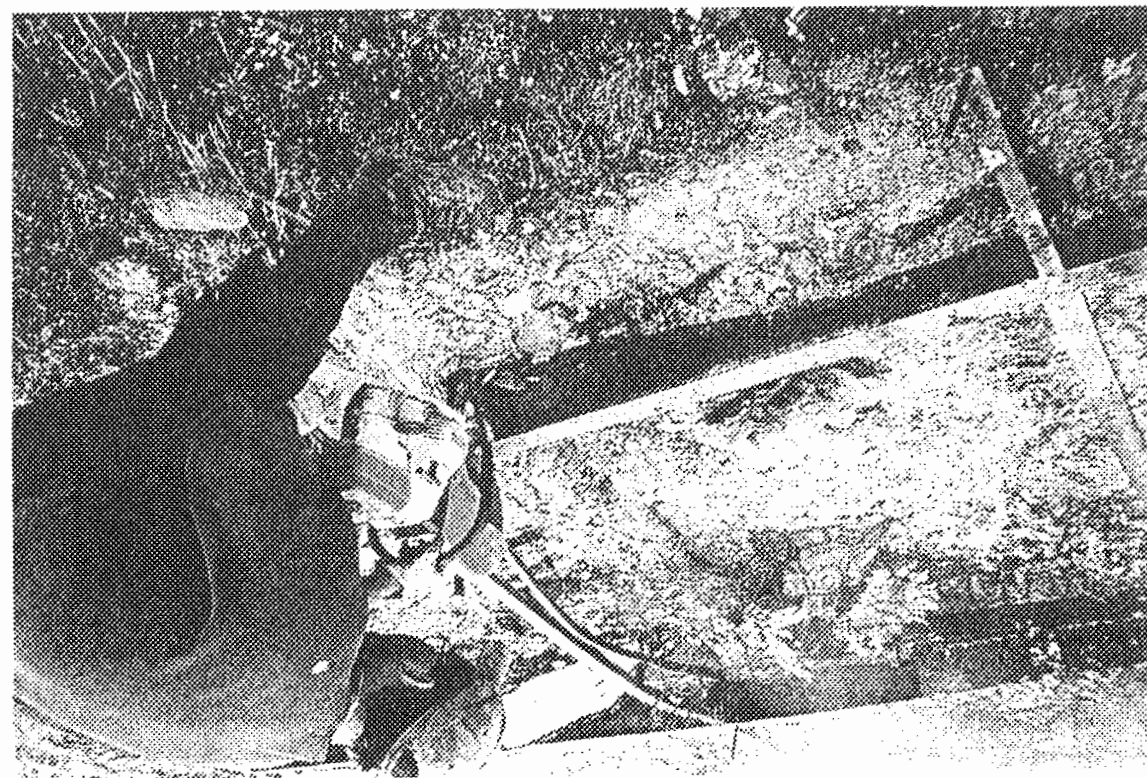


Figure #70

Site #7
Belcher Creek camp

Cutting frame into slingable loads



Figure #71

Site #7
Belcher Creek camp

Sling loads

Figure 73
Site #7
Belcher Creek camp
Slinging frame

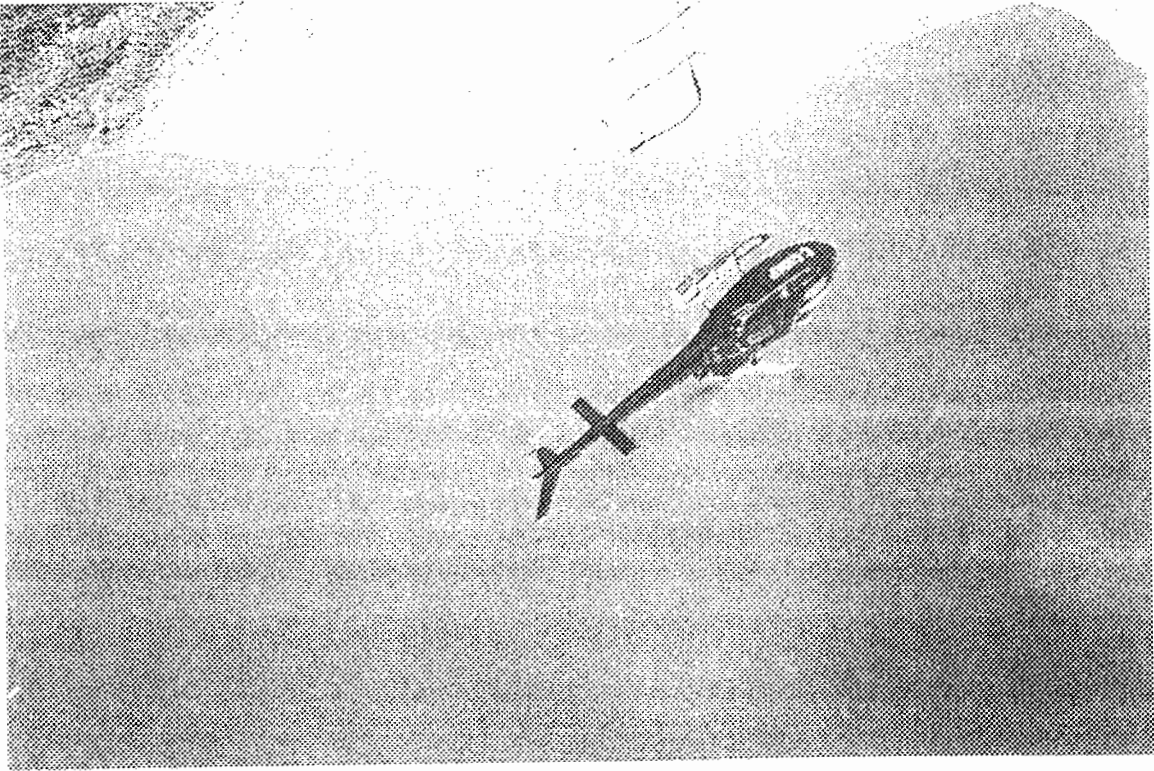


Figure 72
Site #7
Belcher Creek camp
Slinging



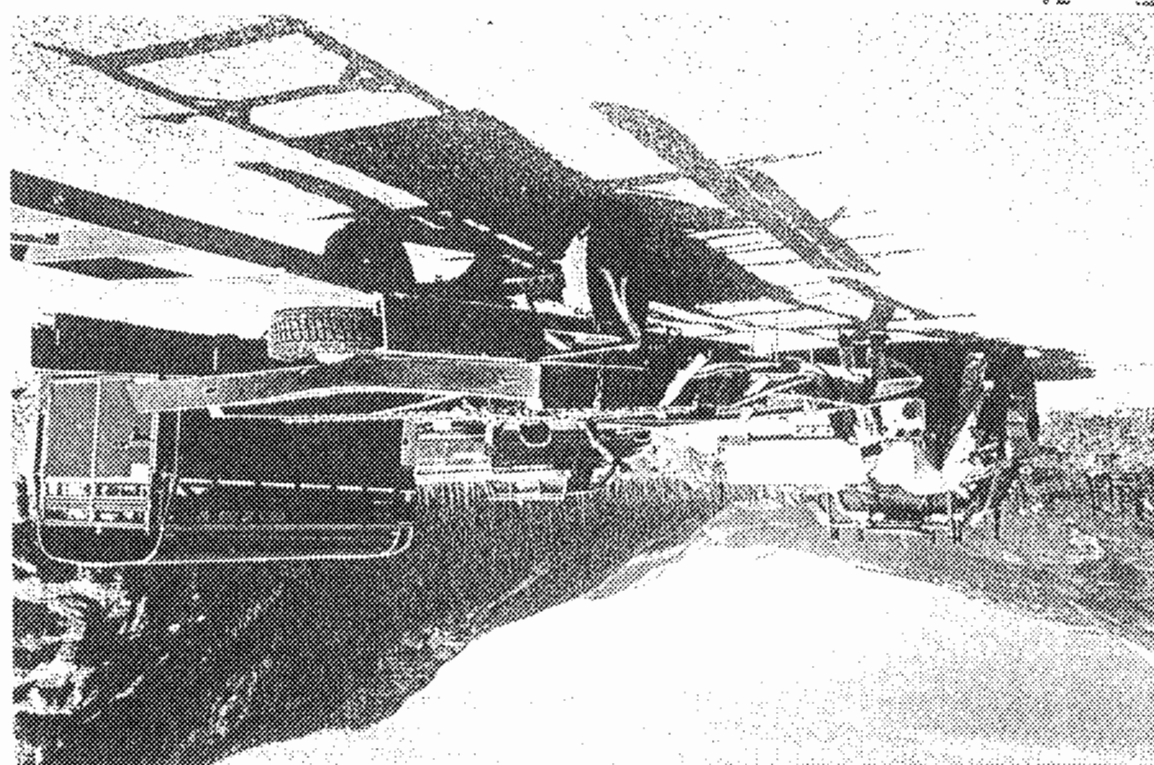


Figure 74
Site #7
Belcher Creek camp
Staging area. Hauling material to Toad River dump site

MUSKWA KECHIKA CLEANUP

CONTRACT #2 SITE #8 TO #11 HUNTING CAMPSITES

COORDINATES

58 29 19 124 17 45
58 31 53 124 20 58
58 49 29 124 48 22

INVENTORY

SITE #8- unable to locate

SITE #9

3 small bags garbage

SITE #10

700 lbs of stoves, cans, bottles, stove pipe

SITE # 11

450 lbs of cans, stoves, bottles, stove pipe

DESCRIPTION

August 17

Crew flew into sites and spent most of the day digging out debris and bagging it. Two bulker bags were slung to Alaska Highway staging area. On the second sling out, a garbage truck (from Wide Sky Disposal) on a construction site, took both bags.
Flew to Site #11 and picked up garbage and slung to staging site. This was then hauled to Toad River dump site.



Figure 75

Site #9
Hunting camps

Coordinates: 58 29 19 124 17 45

Camp by Chischia Creek



Figure 76

Site #9
Hunting camps



Figure 77
 Site #10
 Moose Horn camp by Tetsa
 Coordinates: 58 31 53 124 20 58
 Site prior to cleanup

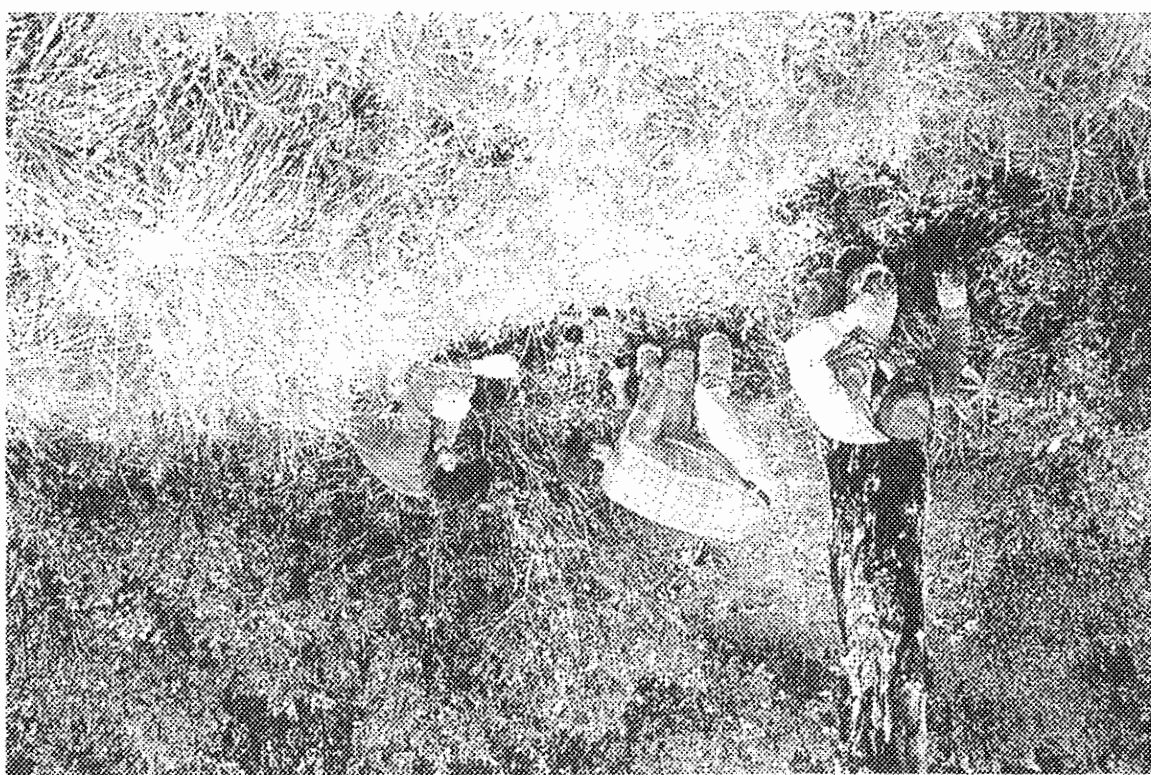


Figure 78
 Site #10
 Moose Horn camp by Tetsa
 Digging out cans



Figure 79

Site #10
Chischa
Junk- stoves, cans, bottles, etc.

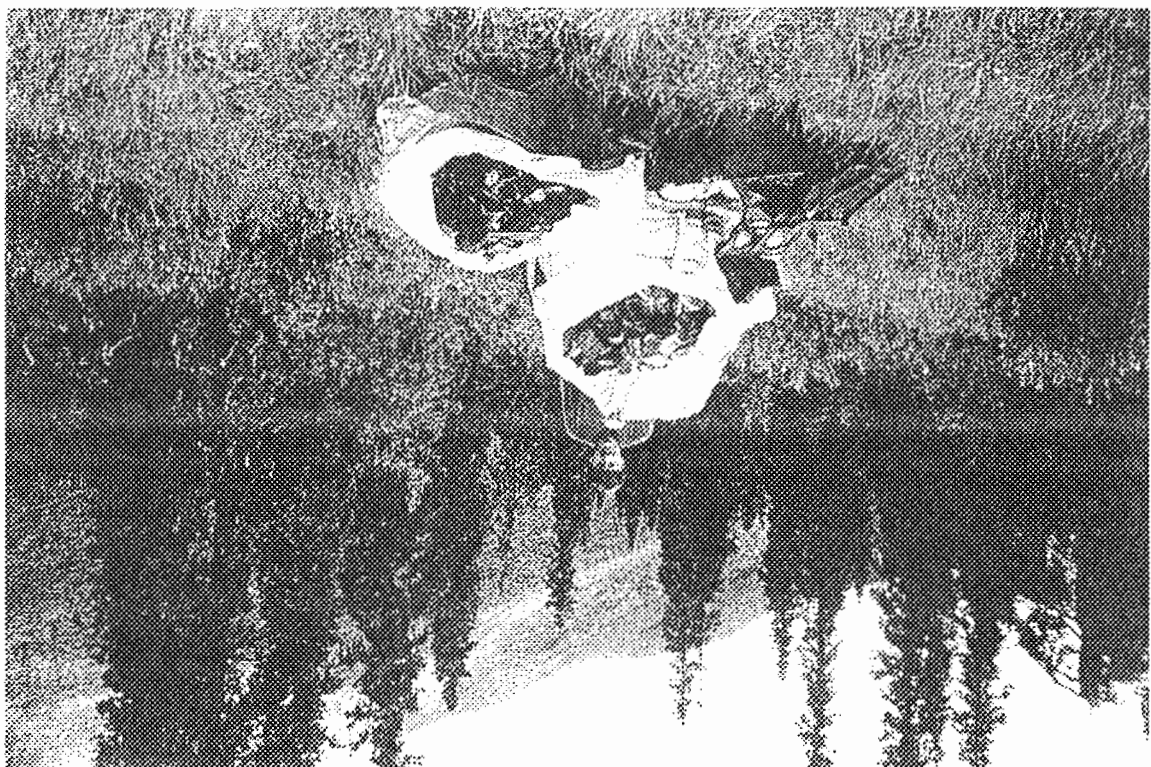


Figure 80

Site #10
Chischa
Bulkier bags of garbage- 700 lbs.

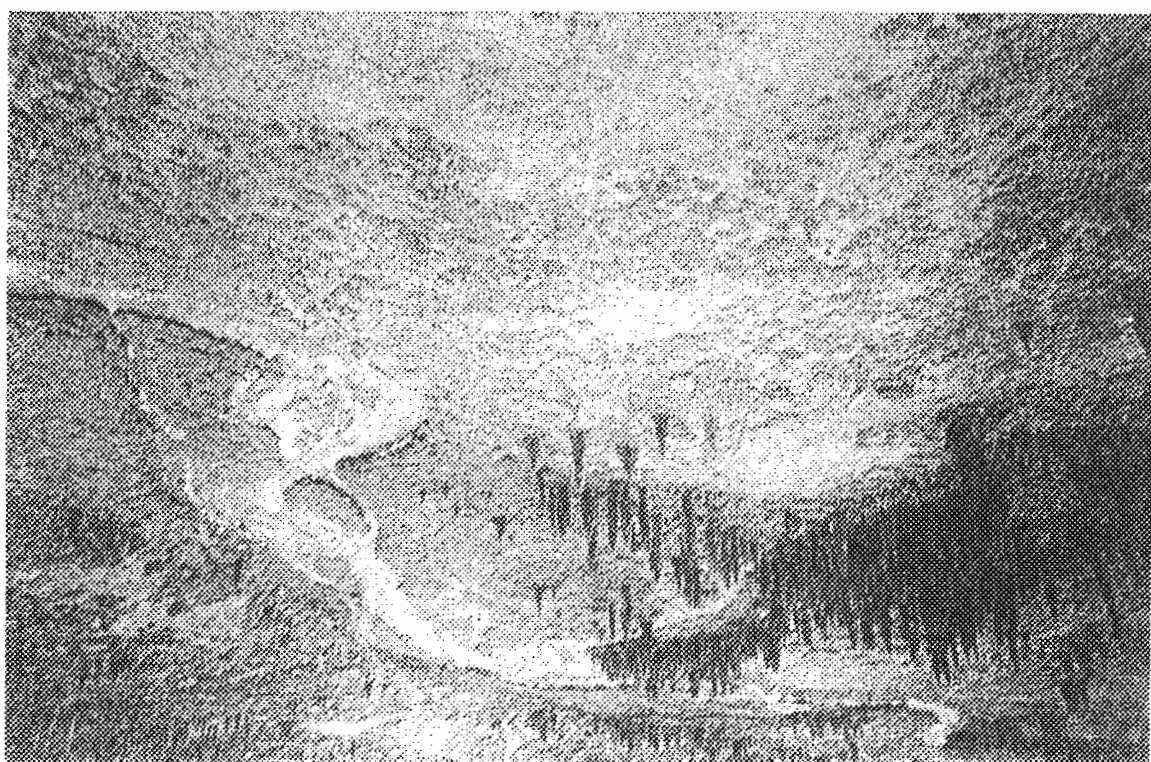


Figure 81

Site #10

Site totally restored

Chischa

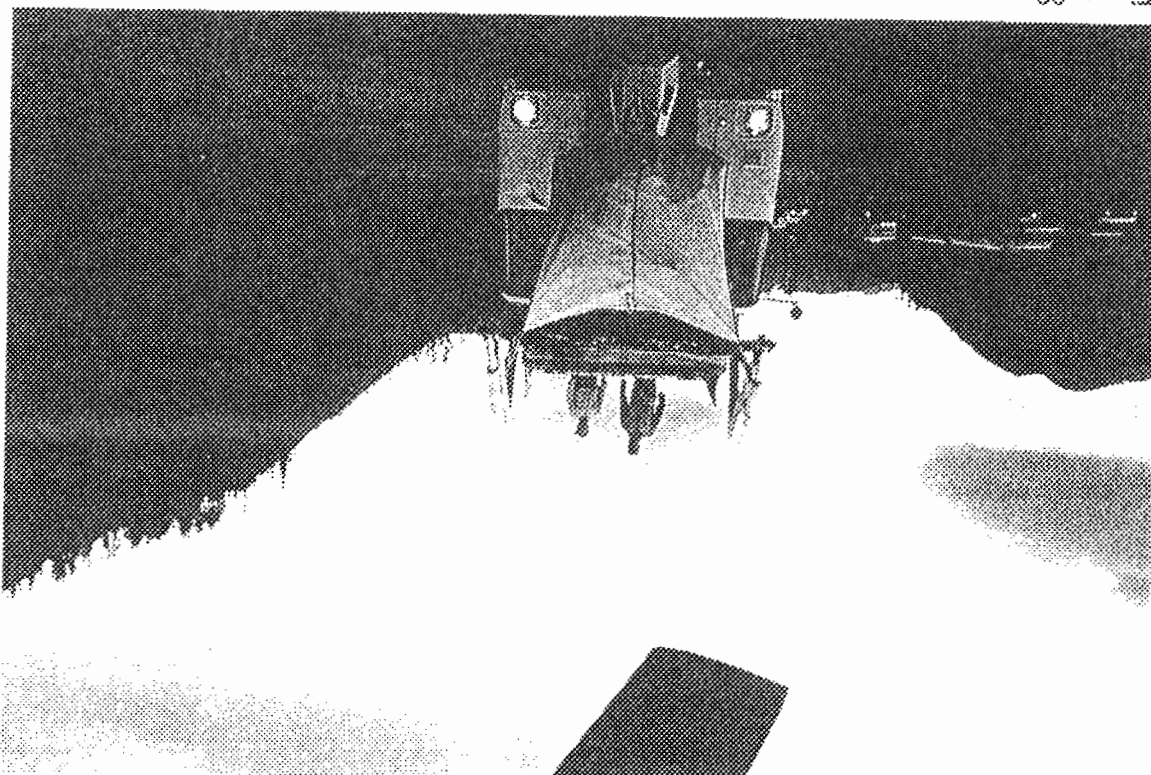


Figure 82

Site #10

Chischa

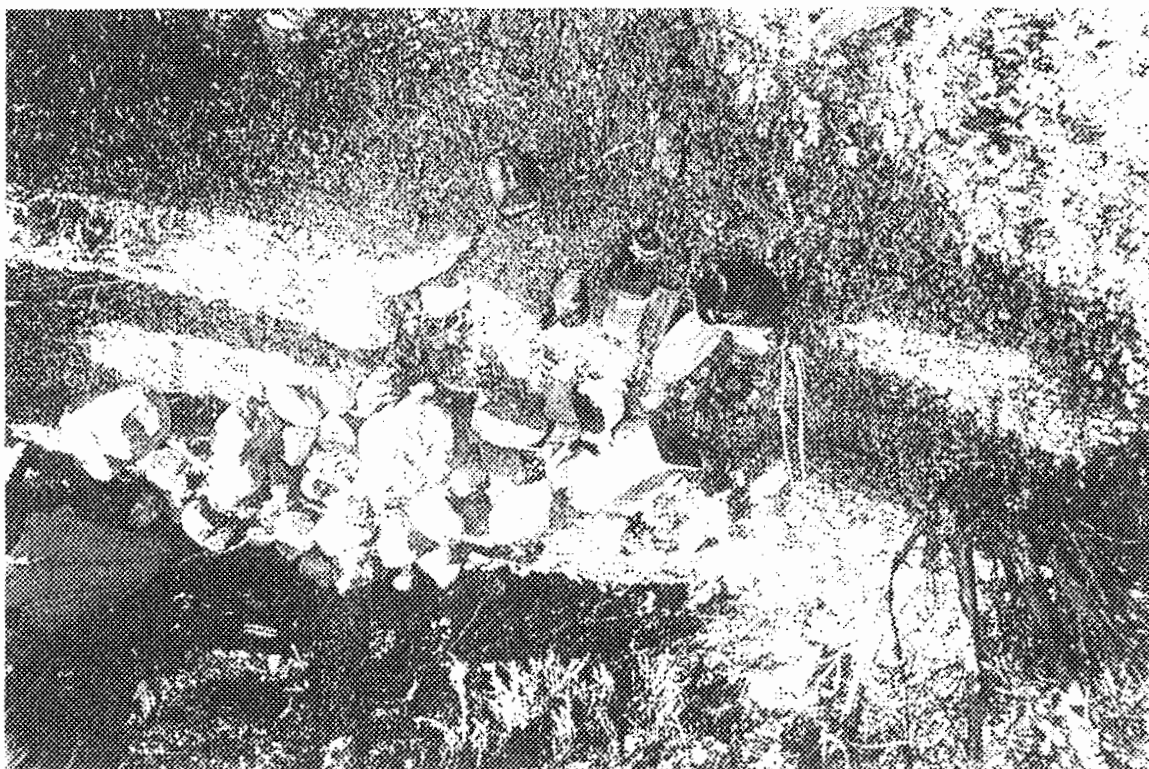
Staging area on Alaska Highway. Caught garbage truck - look two bulker bags of trash

Prior to cleanup

Snake Creek camp

Figure 84

Site #11



Site prior to cleanup

Snake Creek camp

Coordinates: 58 49 29 124 48 22

Figure 83

Site #11





Figure 85
Site #11
Snake Creek camp
Cleaning up- digging out garbage



Figure 86
Site #11
Snake Creek camp
1 bulker bag of garbage



Figure 87
Site #11
Snake Creek camp
Site cleaned up

MUSKWA KECHIKA CLEANUP

CONTRACT #2 SITE # 12 CHISCHA CREEK
UNABLE TO FIND

CONTRACT #2 SITE #13 GRANNY CREEK #1 AND #2

COORDINATES 57 56 22 124 07 20
57 58 22 124 04 14

INVENTORY

27 large drums
10 small drums
2 heating stoves
300 lbs 1 bulk bag of cans, bottles, pails, stove pipe
800 board feet burned lumber

August 17
Located site

August 18
Flew crew into site and completed cleanup. All debris was flown to Barry Tompkins' ranch. Barry was very glad to see cleanup being done. He said that he would have twin otter in two times in the next while and costs could be split to have all the above debris hauled to Mile 222 airstrip on the Alaska Highway.
Villers Air delivered helicopter fuel and hauled 11 old drums on a back haul to Fort Nelson. All plywood, tent frames, and core boxes were burned on site. (total volume burn=800 board feet)

Figure 89
Site #13
Prior to cleanup

Granny Creek #1

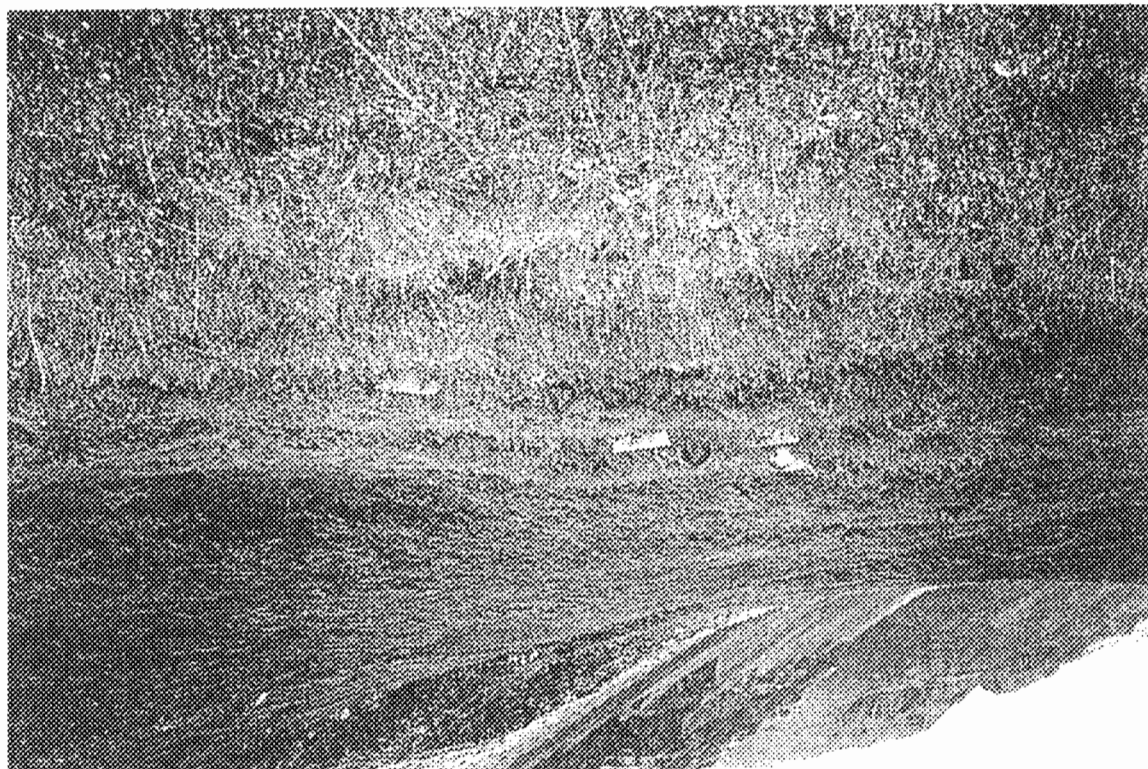


Figure 88
Site #13
Site prior to cleanup

Granny Creek #1

Coordinates: 57 56 22 124 07 20

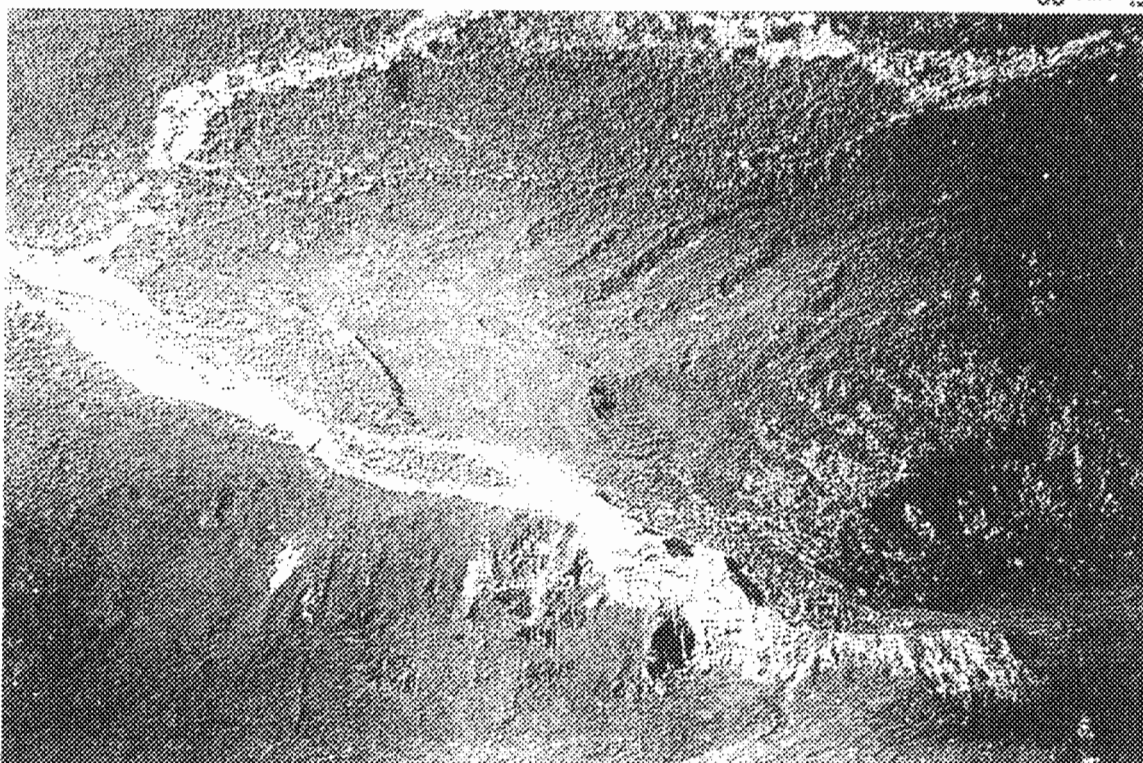


Figure 91
Site #13
Granny Creek #1
Cleaning up site. Note wood waste to burn

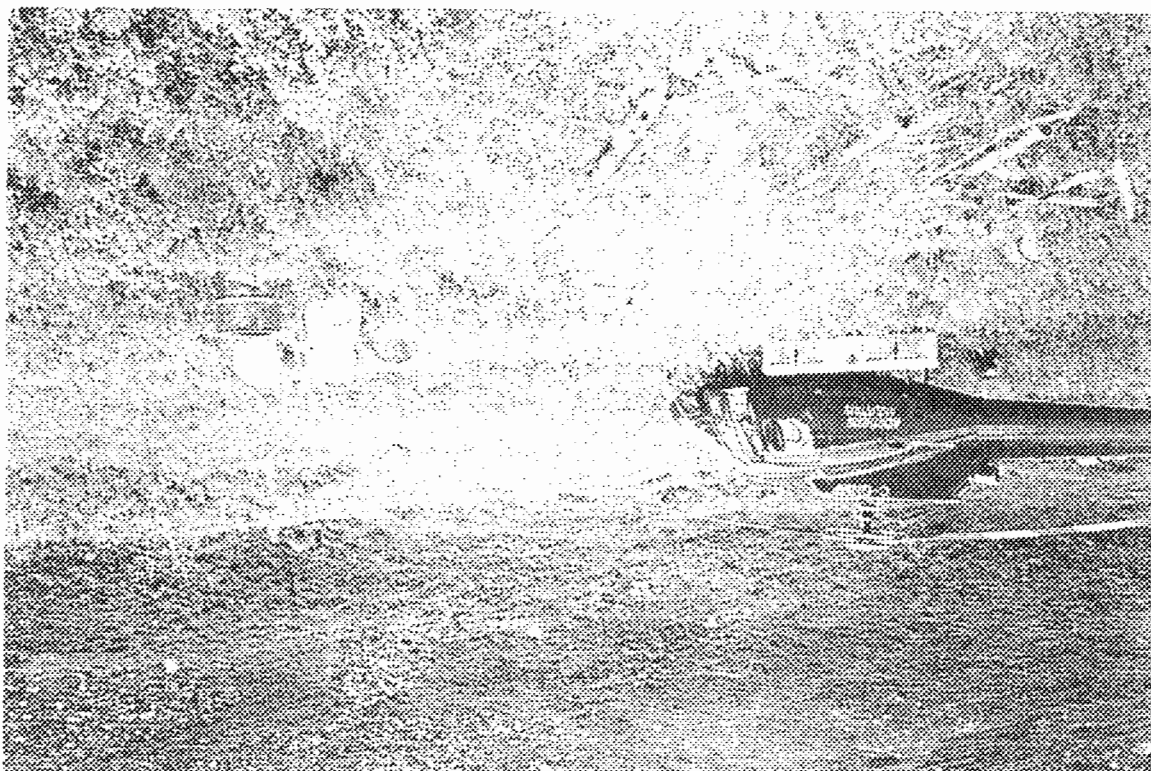


Figure 90
Site #13
Granny Creek #1
Gathering drums to sling

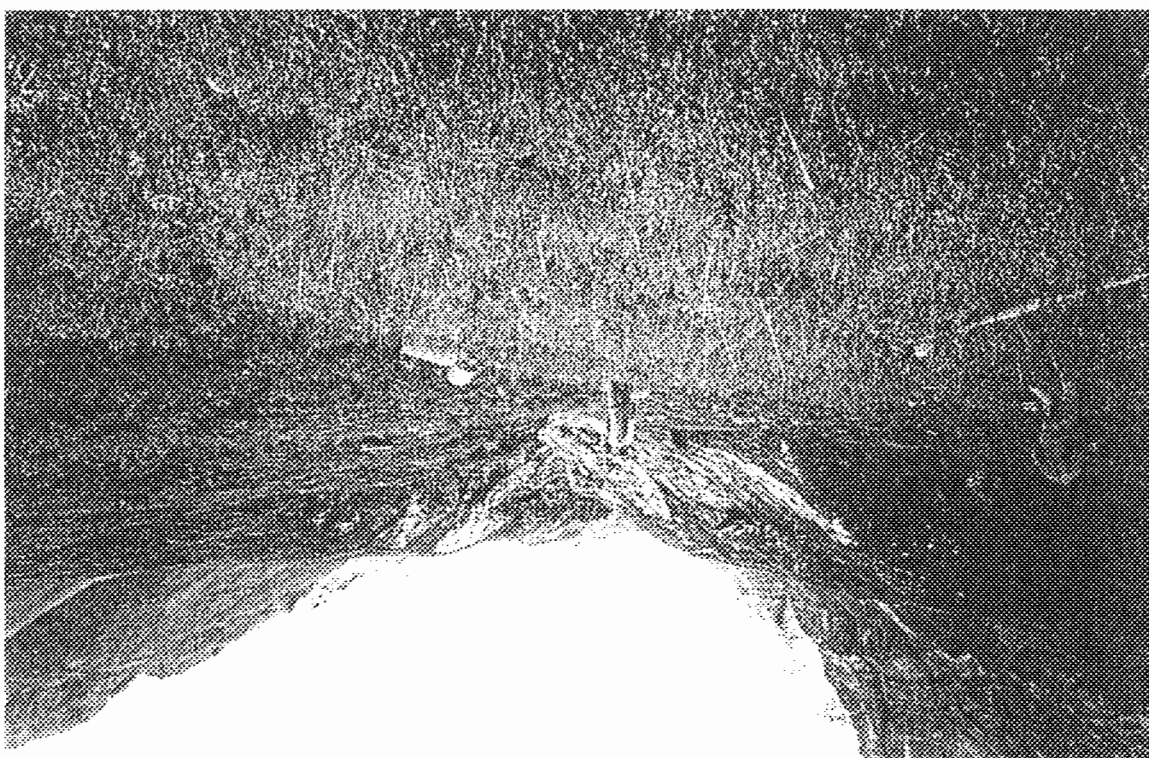


Figure 93
Site #13
Burning wood waste

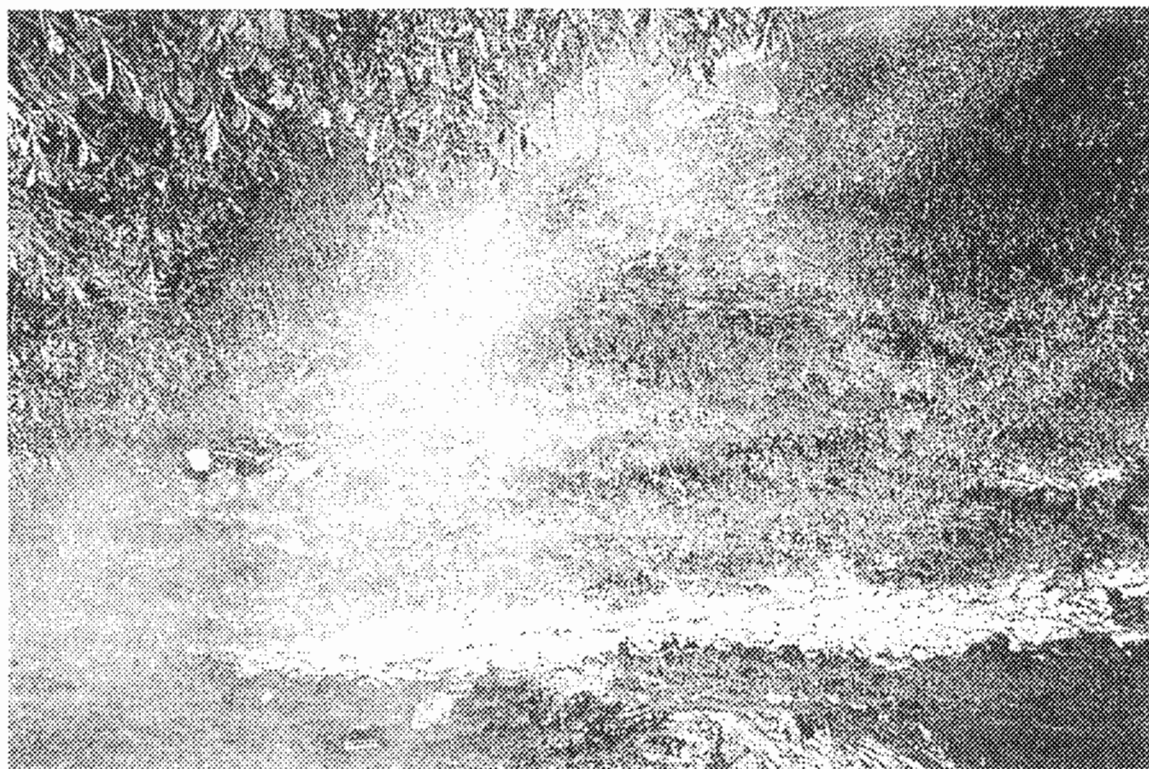
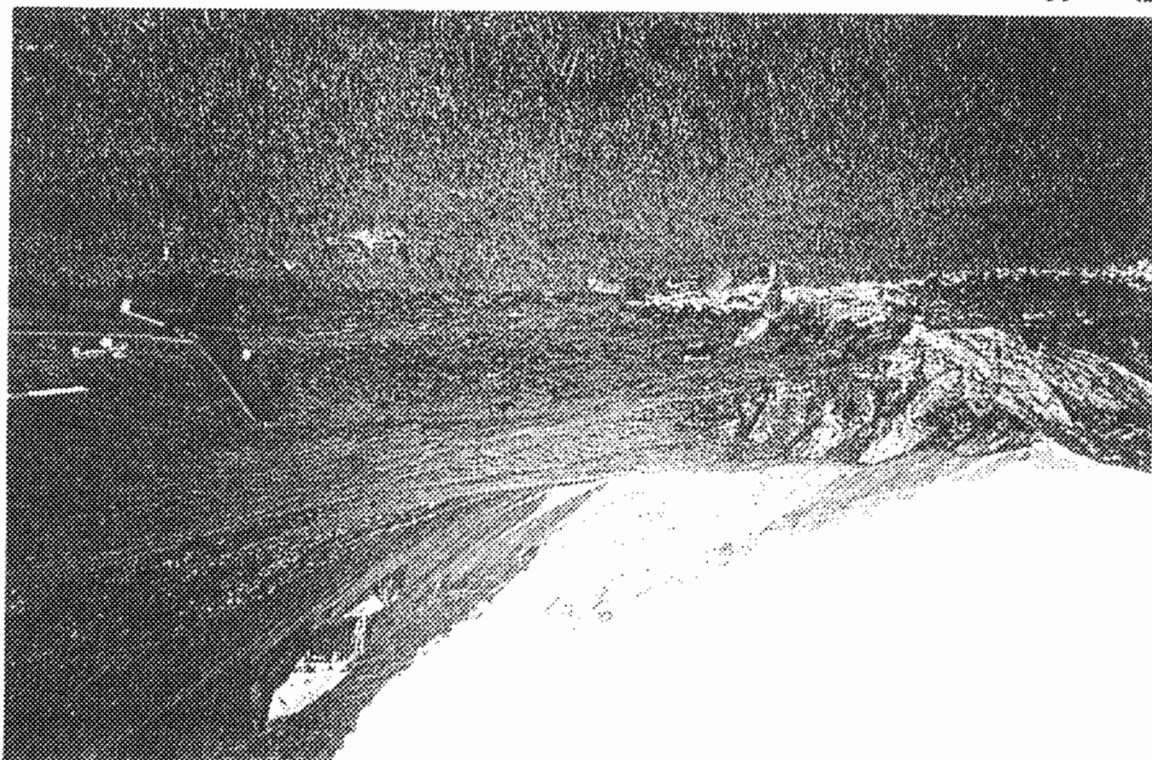


Figure 92
Site #13
Staging sling loads
Granny Creek #1



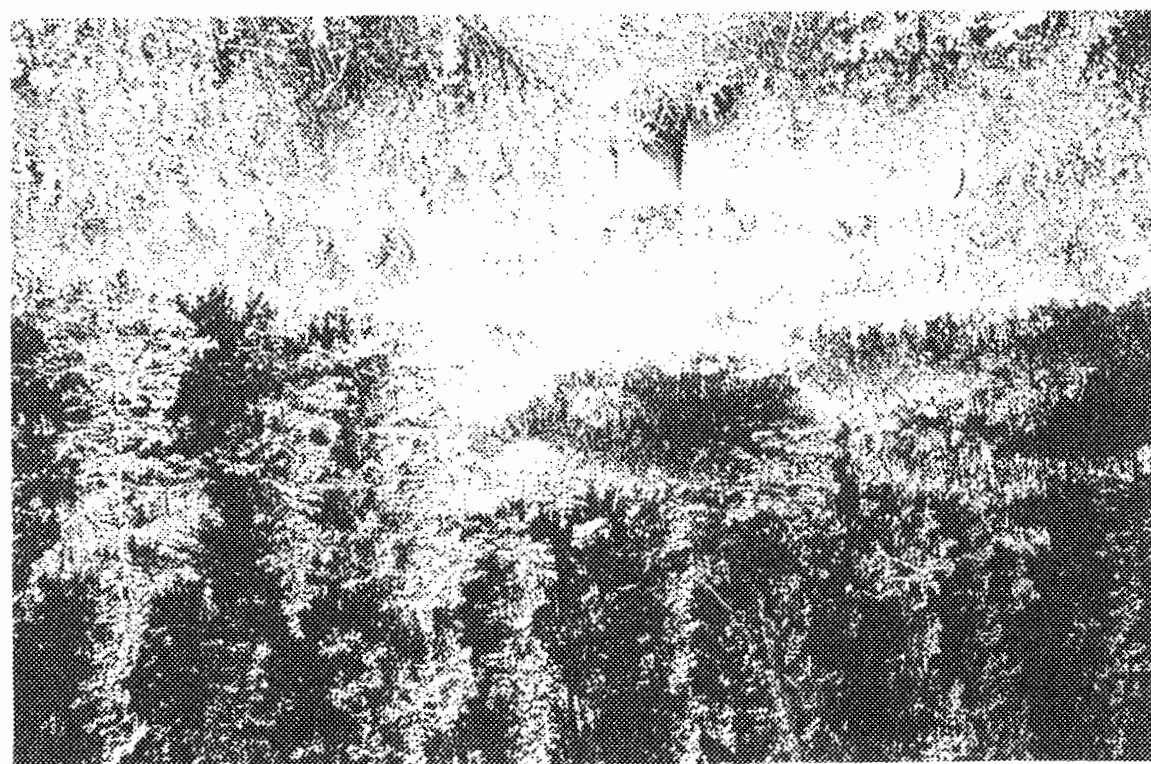


Figure 94

Site #13

Granny Creek #2

Coordinates: 57 58 22 124 04 14

5 drums to sling out

MUSKWA KECHIKA CLEANUP

CONTRACT #2 SITE #14 TO #17 DEAD DOG AND GATHO

COORDINATES DEAD DOG drums 58 06 44 124 11 02

DEAD DOG airplane 58 07 26 124 08 26

Fencing 58 04 51 124 05 45

Drum 58 03 16 124 13 50

INVENTORY

9 large drums

5 small drums

1 full roll fencing

4 part rolls fencing

8 steel posts

1 airplane frame and associated debris

August 18

One crew worked on strapping airplane frame and second crew was dropped at Granny Creek to sling out all debris. Barry Tompkins told us about some fencing that Forestry had left near his property, which was located and sling out. Crew returned to Summit Lake.

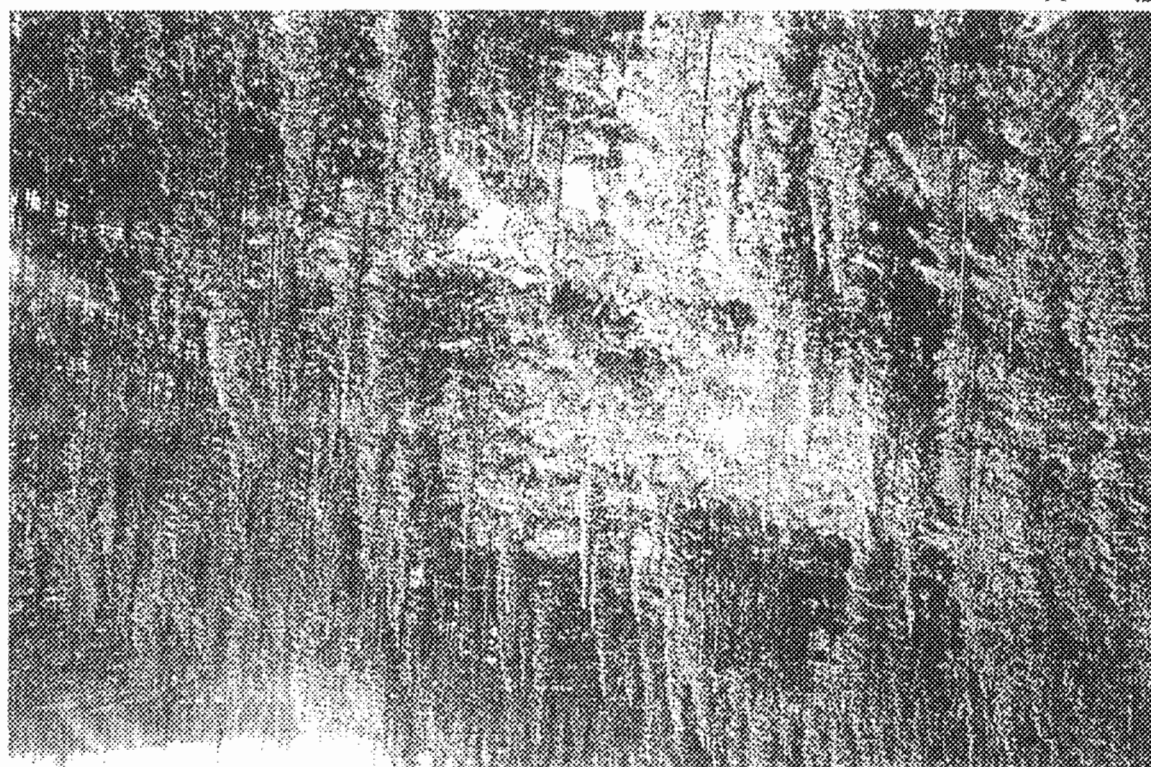


Figure 98

Site #15

Dead Dog

Plane to sling to Barry Tompkins' ranch

Coordinates: 58 07 26 124 08 26

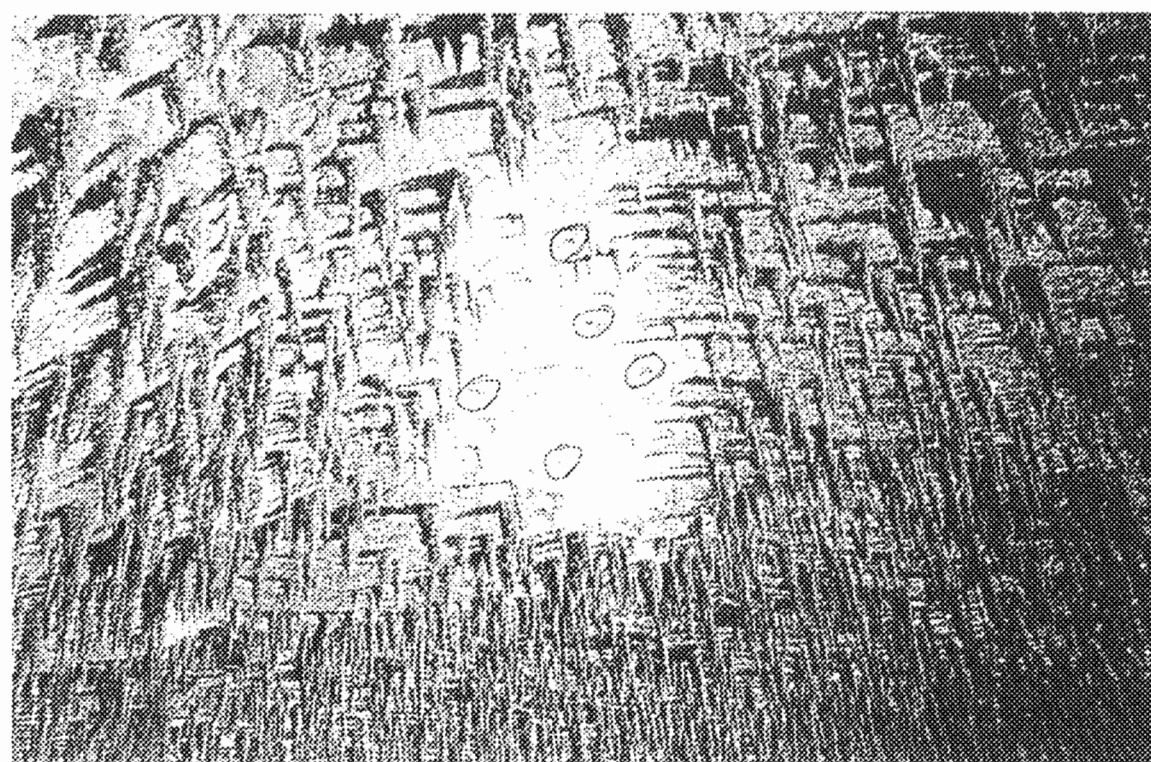


Figure 95

Site #14

Dead Dog

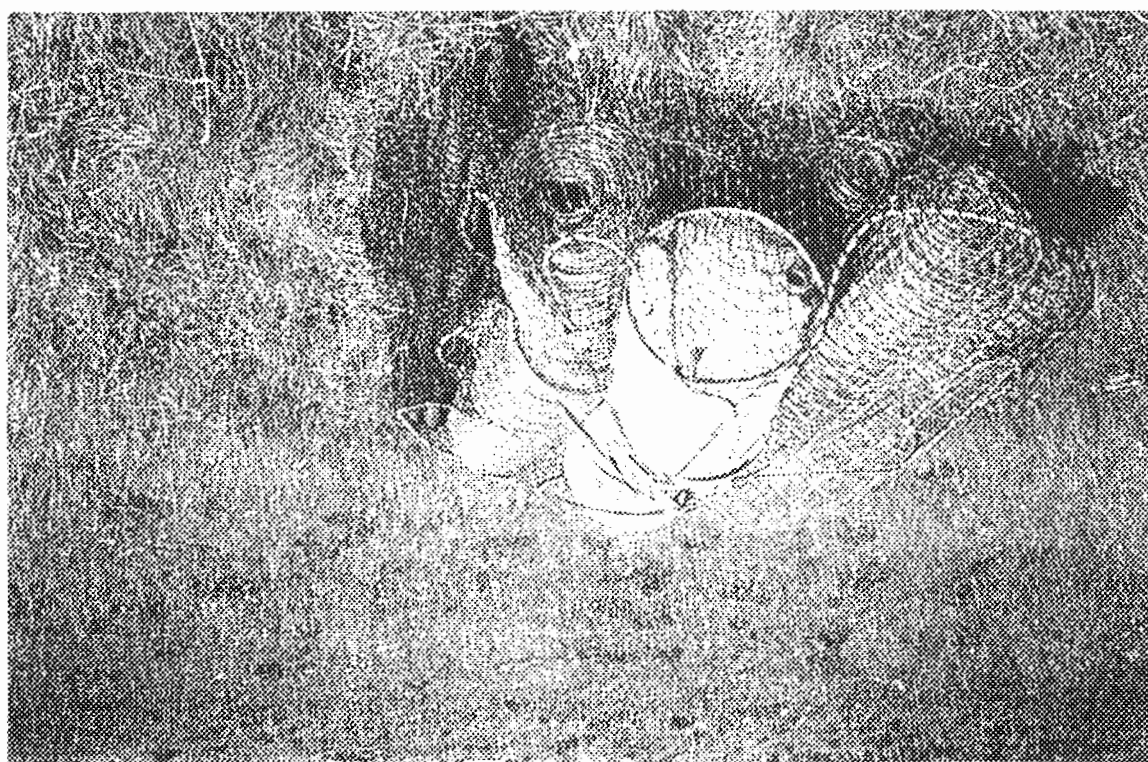
6 drums to sling out

Coordinates: 58 06 44 124 11 02

Figure 98
Site #16
Galho River
Fencing on steep slope- 4 rolls, 8 posts, 2 drums



Figure 97
Site #16
Galho River
Coordinates: 58 04 51 124 05 45
Fencing left by Forestry at Tompkins' ranch on steep hillside



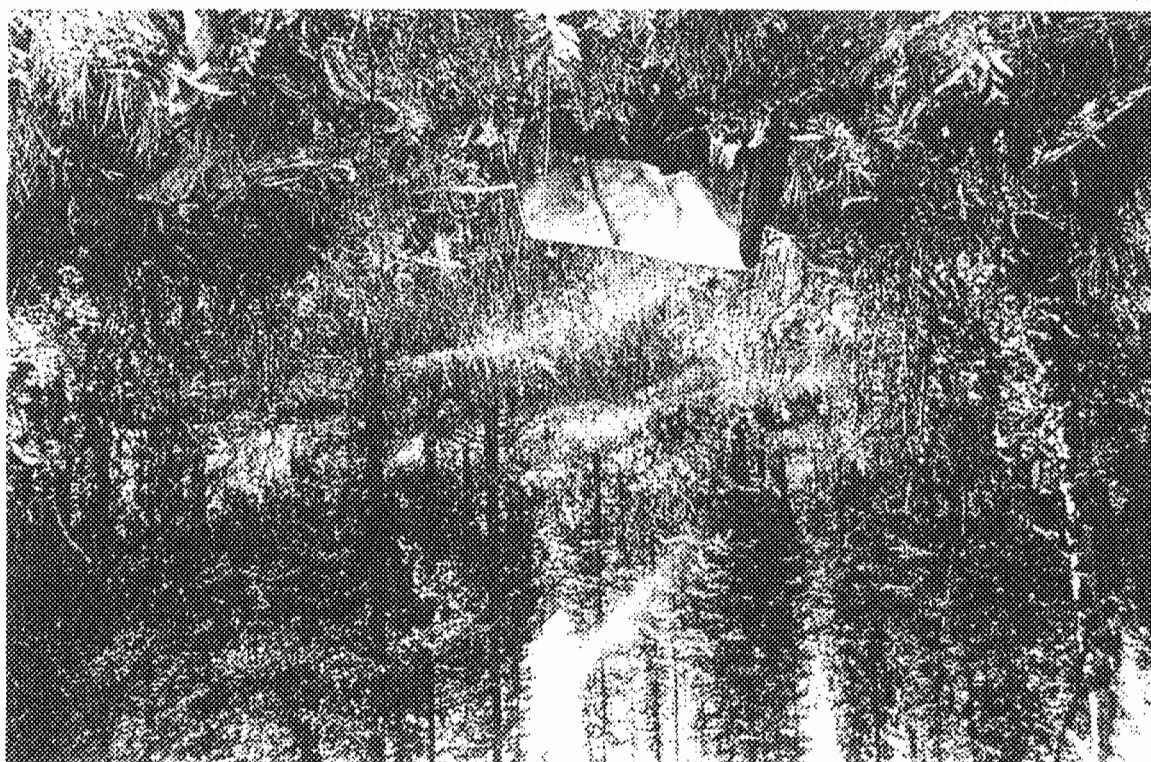


Figure 99

Site #17

Galho River

Coordinates: 58 03 16 124 13 50

Drum and trash as reported by Barry Tompkins--2 miles from ranch

MUSKWA KECHIKA CLEANUP

CONTRACT #2 SITE #18 AND #19 SUMMIT LAKE

COORDINATES

58 39 36 124 38 48
58 39 26 124 39 12

INVENTORY

2 crashed airplanes

DESCRIPTION

August 20

Crew flew to crash sites and sling all debris to Summit Lake and then hauled by truck to Toad River dump site.

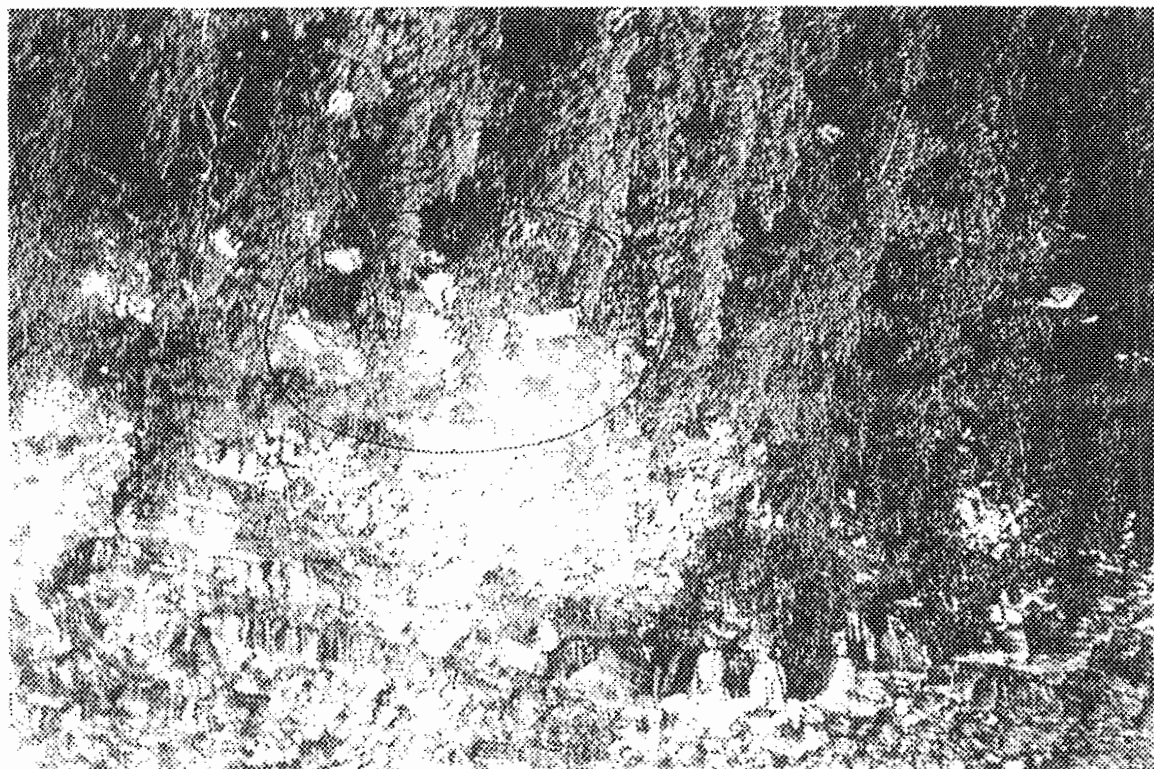


Figure 101

Site #19

Summit Lake

Coordinates: 58 39 26 124 39 12

Crashed plane removed to highway and hauled to Toad River dump site

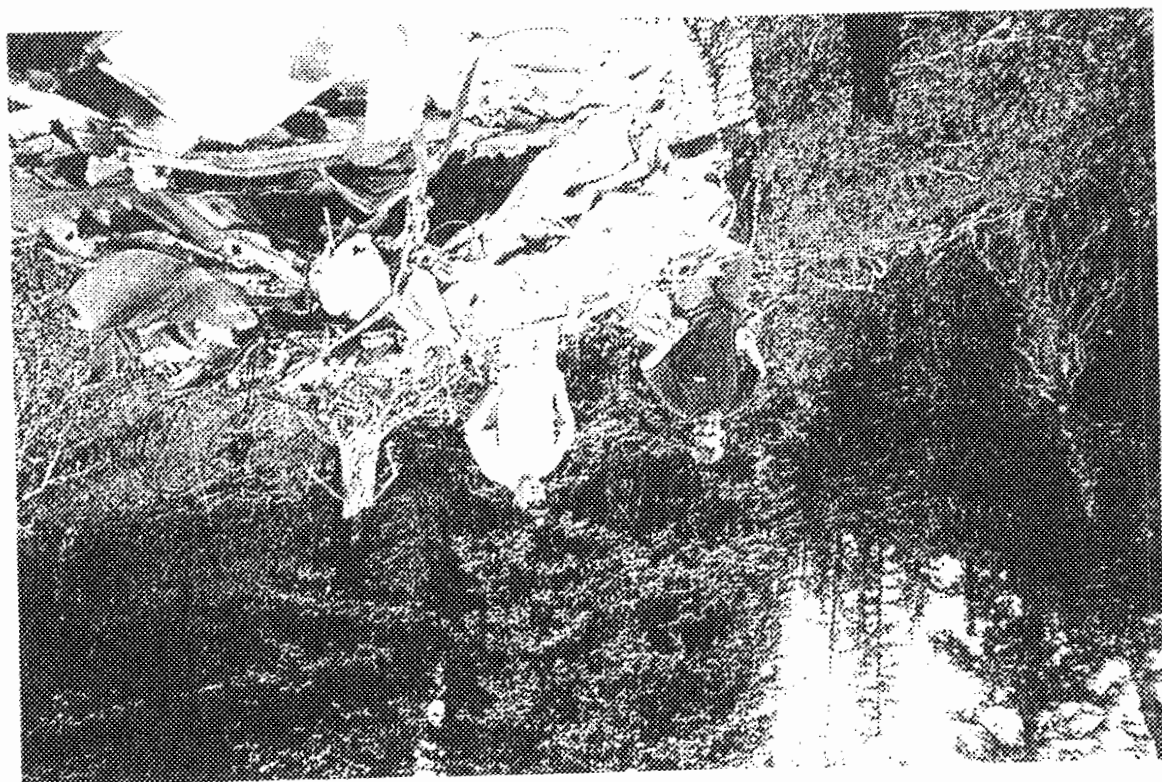


Figure 100

Site #18

Toad River

Coordinates: 58 39 26 124 39 12

Crashed and burned plane in sight of Alaska Highway ready to sling out